

تتميز هذه العملية بالسرعة والدقة العالية. يمكن تصنيع الأجزاء المعقدة وتثبيتها في وقت واحد دون لحام. هناك العديد من المواد للاختيار من بينها: سبائك التيتانيوم، سبائك الكوبالت والكروم، الفولاذ المقاوم للصدأ، الذهب والفضة وغيرها من المواد المتاحة؛ (CNC) تصنيع الأجزاء المعقدة بدقة عالية.

المعدنية D مزاي الطباعة 3:

1. صب لمرة واحدة: يمكن طباعة أي بنية معقدة وتشكلها في وقت واحد دون لحام.
2. هناك العديد من المواد للاختيار من بينها: سبائك التيتانيوم، سبائك الكوبالت والكروم، الفولاذ المقاوم للصدأ، الذهب والفضة وغيرها من المواد المتاحة؛
3. تحسين تصميم المنتج. من الممكن تصنيع الأجزاء الهيكلية المعدنية التي لا يمكن تصنيعها بطرق تقليدية، مثل استبدال الجسم الصلب الأصلي بنية معقدة ومعقولة، بحيث يكون وزن المنتج النهائي أقل، ولكن الخصائص الميكانيكية أفضل؛
4. فعالة، توفير الوقت وتكلفة منخفضة. لا توجد مواد وقوالب مطلوبة، وأجزاء من أي شكل يتم إنشاؤها مباشرة من بيانات رسومات الكمبيوتر، والتي تقصر إلى حد كبير دورة تطوير المنتج، وتحسن الإنتاجية ويقلل من تكاليف الإنتاج.

Galvo مزاي المفتاح الماسح الضوئي:

1. انخفاض درجة الحرارة الانجراف (أكثر من 8 ساعات طويلة الأجل إزاحة الانجراف ≥ 30 ميكراد).
2. مرتفع التكرار (≥ 5 ميكراد: PSH14E)
3. تكرر عالية للغاية (≥ 3 ميكراد)، سرعة عالية (15 م / ث: PSH14)
4. التكرار المرتفع للغاية (≥ 3 ميكراد)، السرعة العالية (15 م / ث) وقوة عالية (1: PSH20)



□□□□□□ □□□□□□□□:

Model	PSH14E	PSH14	PSH20
Maximum allowed average laser power (1)	200W	300W	500W
Damage threshold for pulsed operation(1)	30J/cm ²	30J/cm ²	30J/cm ²
Aperture	14mm	14	20
Effective scan angle(2)	±12°	±12°	±12°
Tracking Error	≤ 0.22ms	≤ 0.2ms	≤ 0.28ms
Step Response Time(1% of full scale)	≤ 0.5 ms	≤ 0.4 ms	≤ 0.7 ms
Speed			
Positioning / jump(3)	< 12 m/s	< 15 m/s	< 9 m/s
Precision marking speed(4)	< 2.5 m/s	< 3 m/s	< 2 m/s
Good Writing quality(3)(5)	600 cps	650 cps	450 cps
High writing quality(3)(5)	450 cps	500 cps	300 cps
Precision			
Linearity	99.8%	99.9%	99.9%
Repeatability	5 urad	3 urad	3 urad
Temperature drift			
Over 8 hours long-term offset drift (after 10min warn-up)	30 urad	30 urad	30 urad
Over 8 hours long-term gain drift (after 10min warn-up)	100 urad	80 urad	80 urad
Operating Temperature Range	25°C±10°C	25°C±10°C	25°C±10°C
Signal Interface	Analog: ±10V Digital: XY2-100	Analog: ±10V Digital: XY2-100	Analog: ±10V Digital: XY2-100
Input Power Requirement (DC)	±15V@ 4A Max RMS	±15V@ 4A Max RMS	±15V@ 4A Max RMS

□□□□□:

1. For 1090-1030 □□□□□□ □□□□□ □□□□□nm□
2. □□□□□□□□□□□ □□□□□□ □□ □□□□□□ □□□□
3. □□ f-theta □□□□□ f = 163mm. □□□□□□□ □□□□□ □□□□□□ □□ □□□□□□ □□□□ □□□□□
4. Erepairable □□□□□□□ □□□ □□□□ □□□□□ □□□ □□□□□□□ □□□□□□□ □□□□□
5. □□□ 1 □□□□□□ □□ □□□□ □□□□□□□□ □□□□□□ □□.





Aluminum Alloy Hydrazine Bottle Adapter

The product is thin in wall thickness with lattice structure inside, and the overall size is too large to be made by traditional manufacturing. However, precise laser forming technology can be integrated into one piece, with short manufacturing cycle and controllable deformation.



Stainless Steel Excellent Thermal-stable structure

The product is an Excellent Thermal-stable joint structure part for satellites with topological configuration and lattice structure inside. It was made of invar alloy which has low coefficient of linear expansion.



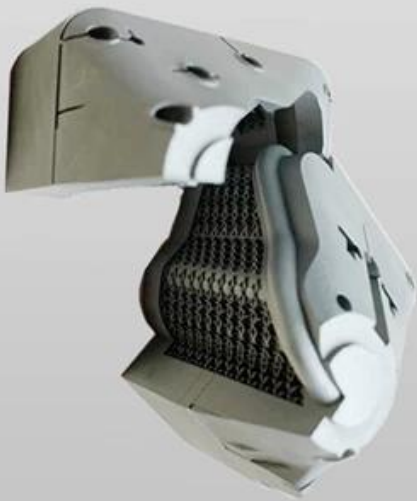
Breathable Steel Mold

The product is printed in one piece, with high precision of special-shaped structure and smooth surface roughness, which reduces the post procedures. Due to the light-weight process, the waste of material is significantly reduced compare to the traditional manufacturing.



Mobile Fixture Mold

The production and inspection jig of electronic products can be completed by laser forming. The product with high precision can be put into use by simple process which reduces the work-hour to only 10 hours. It is suitable for rapid iteration of R&D and trials as well as spare parts fast production. The light-weight design can be added into it for material save.



Light-weight water route mold

Conformal cooling water channels are distributed under the product surface, which improves the cooling efficiency and uniformity. Most areas of the parts are light-weighted design ,and reduce the overall weight by 24% which saves raw materials, shortens the production cycle, and reduces production costs.







重要仪器,
非专业人士勿动。

OptiCentric 300

TRIOPTICS





PerkinElmer Lambda 950---Testing Transmission and Reflectivity



□□□□ □□□□





C E R T I F I C A T E

ATTESTATION CERTIFICATE OF MACHINERY AND LOW VOLTAGE DIRECTIVES

Technical file of the company mentioned below has been observed and audit has been completed successfully. 2006/42/EC Machinery Directive and 2014/ 35/EU Low Voltage Directive have been taken as references for these processes

Company Name : **Camman HAAS Laser Technology (Suzhou) Co., Ltd.**

Company Address : No 155, West Road Suhong, Suzhou Industrial Park, Suzhou City, Jiangsu , P.R.China

Related Directives and Annex : **Low Voltage Directive 2014/35/EU
Machinery Directive 2006/42/EC**

Related Standards : **EN ISO 12100:2010; EN 60204-1:2006+A1:2009+AC:2010**

Product Name : **Laser Marking Machine**

Report No and Date : SD-90049717.09.08.2018

Product Brand/Model/Type : LMCH-3W,LMCH-5W,LMCH-10W,LMCH-15W,LMCH-20W,LMCH-25W,
LMCH-30W,LMCH-50W,LMCH-60W,LMCH-70W,LMCH-100W,
LMCH-120W,LMCH-150W,LMCH-200W,LMCH-300W,LMCH-500W

Certificate Number : **M.2018.201.N6073**

Initial Assessment Date : 10.08.2018

Registration Date : 13.08.2018

Reissue Date/No :

Expiry Date : **12.08.2023**

Signature
UDEM International Certification
Auditing Training Centre Industry
and Trade Inc. Co.



The validity of the certificate can be checked through www.udem.com.tr. The CE mark shown on the right can only be used under the responsibility of the manufacturer with the completion of EC Declaration of Conformity for all the relevant Directives. This certificate remains the property of UDEM International Certification Auditing Training Centre Industry and Trade Inc. Co. to whom it must be returned upon request. The above-mentioned firm must keep a copy of this certificate for 15 years from the registration of certificate. This certificate only covers the product(s) stated above and UDEM must be notified in case of any changes on the product(s).
Address: Mithakere Mahalleli 2073 Sokak (Eski 93 Sokak) No:10 Çankaya - Ankara - TÜRKİYE
Phone: +90 0312 443 03 90 Fax: +90 0312 443 03 76
E-mail: info@udemtr.com.tr www.udem.com.tr



Certificate of Approval

Certificate No.: 10119Q12565R0M

Awarded to

**Carman Haas Laser Technology(SuZhou)
Co., Ltd.**

Organization Code Certificate No. / Unified Social Credit Code:91320594MA1MF4EP56
Add.:No.155, West Road Suhong, Suzhou Industrial Park, Suzhou City, Jiangsu Province, P.R. China. 215000

Beijing ZhongLianTianRun Certification Center (ZLTR) certify that the
Quality Management System of the above organization has been assessed and found to be
in accordance with the requirements of the standard:
GB/T19001-2016 / ISO9001:2015

SCOPE OF CERTIFICATION/REGISTRATION

The Research and Development and Production of Optics Lenses (Except the limits of national laws and regulations.)

This certificate is made valid when used with certification scopes and the requirements of applicable laws and regulations. These requirements include, but are not limited to, administrative permits, scopes of qualifications, and CCC requirements.

Subject to operation conditions in requirements conformity with Quality Management System.

This Certificate is valid for a period of three years only.

Date from: Mar 13th,2019 To: Mar 12th,2022

The effectiveness of this Certificate shall be Validated by periodic surveillance audit of ZLTR for maintenance.

Information of this certificate can be found on the official website of Beijing Zhonglian Tianrun Certification center (<http://www.zltr.com.cn>)



Beijing ZhongLiantianrun Certification Center

Room2003, 22nd Floor, 2nd Unit, Block 1, No.4 Yard, Qiyang Road, Chaoyang District, Beijing, P.R. China 100022

Information of the certificate can be found on the official website of Certification and Accreditation Administration of the People's Republic of China (<http://www.cnca.gov.cn>)

ISO 9001

ISO 9001





□□□□□□ □□□□:

- : 1. 2. 3. 4.

QUESTION:

- (1) dhl ups tnt ems ets
- (2) CNF CIF

ANSWER:

Q1. How many types of payment methods are there?

A1: There are four types of payment methods: T/T, L/C, D/P, and D/A.

Q2. How do you define trade credit?

A2: Trade credit is a form of payment where the buyer pays the seller at a later date, usually within 30, 60, or 90 days.

Q3. How do you define trade credit?

A3: Trade credit is a form of payment where the buyer pays the seller at a later date, usually within 30, 60, or 90 days.

Q4. How do you define trade credit?

A4: Trade credit is a form of payment where the buyer pays the seller at a later date, usually within 30, 60, or 90 days.

Q5. May I know the difference between T/T and L/C?

A5: T/T is a form of payment where the buyer pays the seller at a later date, usually within 30, 60, or 90 days. L/C is a form of payment where the buyer pays the seller through a bank.

Q6. Can you explain the difference between T/T and L/C?

A6: T/T is a form of payment where the buyer pays the seller at a later date, usually within 30, 60, or 90 days. L/C is a form of payment where the buyer pays the seller through a bank.

Q7. How do you define OEM and ODM?

A7: OEM (Original Equipment Manufacturer) is a manufacturer that produces goods for another company. ODM (Original Design Manufacturer) is a manufacturer that designs and produces goods for another company.

Q8. How do you define OEM and ODM?

A8: OEM (Original Equipment Manufacturer) is a manufacturer that produces goods for another company. ODM (Original Design Manufacturer) is a manufacturer that designs and produces goods for another company.