

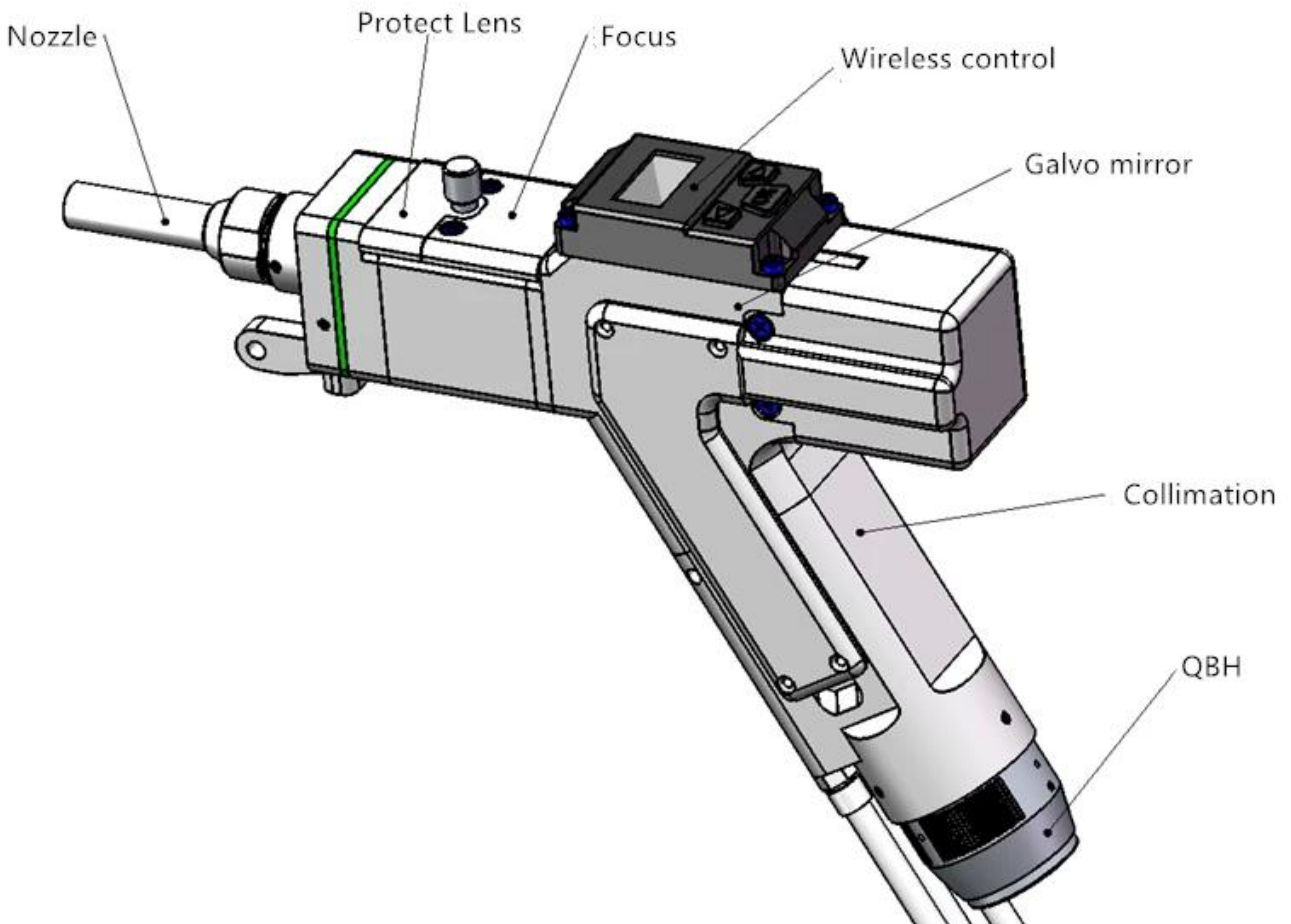
Handheld Laser

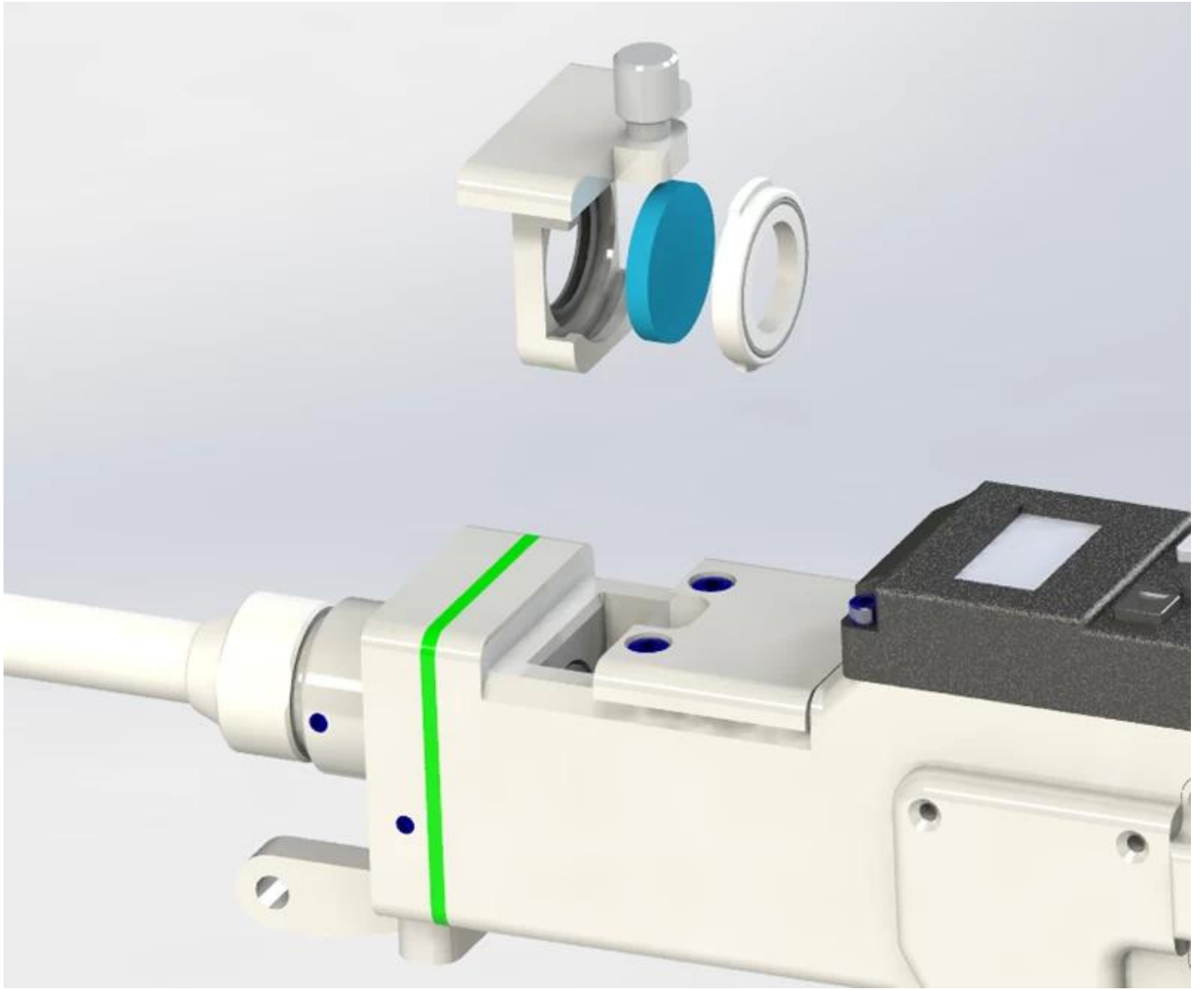
Handheld Laser:

.Handheld Laser is a portable laser device used for alignment and measurement. It features a laser beam that can be projected onto a surface to create a straight line. The device is easy to use and can be adjusted to different heights and angles. It is commonly used in construction, manufacturing, and surveying. The laser beam is visible in the air, making it easy to see and follow. The device is compact and lightweight, making it easy to carry and use in the field. It is a valuable tool for anyone who needs to ensure that a structure is perfectly straight and level.

Handheld Laser

Handheld Laser Carmanhaas :Handheld Laser is a portable laser device used for alignment and measurement. It features a laser beam that can be projected onto a surface to create a straight line. The device is easy to use and can be adjusted to different heights and angles. It is commonly used in construction, manufacturing, and surveying. The laser beam is visible in the air, making it easy to see and follow. The device is compact and lightweight, making it easy to carry and use in the field. It is a valuable tool for anyone who needs to ensure that a structure is perfectly straight and level.







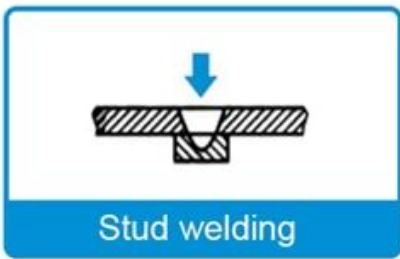
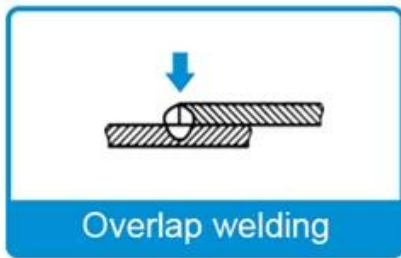
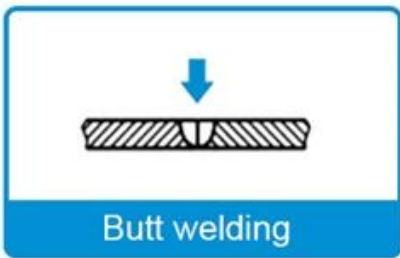
□□□□□ □□□□□□□:

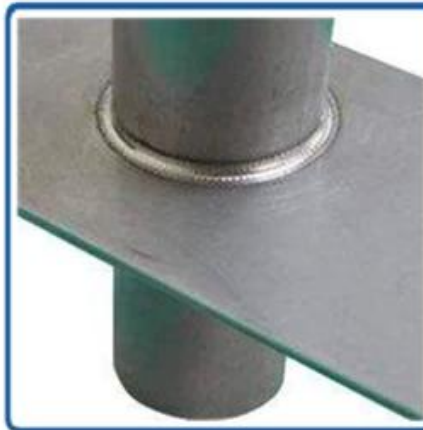
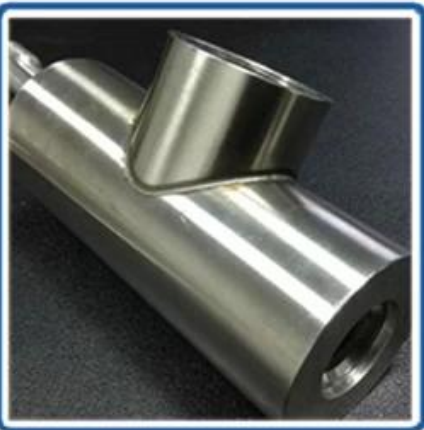
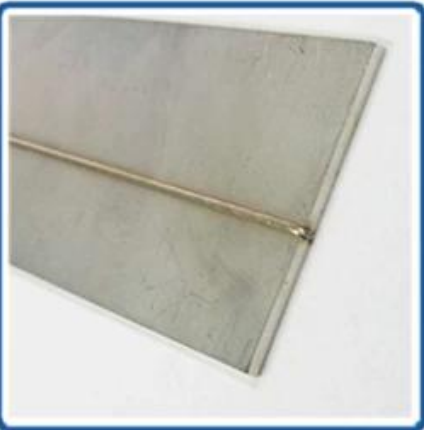
□□□□□:	HW960.
□□□□□□ □□□	Max.2000W.

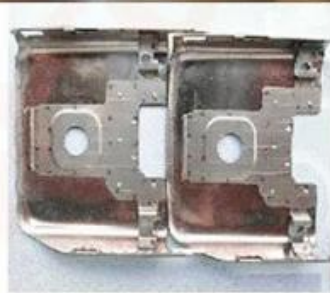
1. Butt welding
 2. GAS / Shielded metal arc welding
 3. Overlap welding
 4. Stud welding
 5. Slange welding
 6. Alaser welding

Butt welding, Overlap welding, Stitch welding, Stud welding, Slange welding, T-joint welding

Butt welding













重要仪器,
非专业人士勿动。

OptiCentric 300

TRIOPTICS





PerkinElmer Lambda 950---Testing Transmission and Reflectivity



□□□□ □□□□



C E R T I F I C A T E

ATTESTATION CERTIFICATE OF MACHINERY AND LOW VOLTAGE DIRECTIVES

Technical file of the company mentioned below has been observed and audit has been completed successfully. 2006/42/EC Machinery Directive and 2014/ 35/EU Low Voltage Directive have been taken as references for these processes

Company Name : **Camman HAAS Laser Technology (Suzhou) Co., Ltd.**

Company Address : No 155, West Road Suhong, Suzhou Industrial Park, Suzhou City, Jiangsu , P.R.China

Related Directives and Annex : **Low Voltage Directive 2014/35/EU
Machinery Directive 2006/42/EC**

Related Standards : **EN ISO 12100:2010; EN 60204-1:2006+A1:2009+AC:2010**

Product Name : **Laser Marking Machine**

Report No and Date : SD-90049717.09.08.2018

Product Brand/Model/Type : LMCH-3W,LMCH-5W,LMCH-10W,LMCH-15W,LMCH-20W,LMCH-25W,
LMCH-30W,LMCH-50W,LMCH-60W,LMCH-70W,LMCH-100W,
LMCH-120W,LMCH-150W,LMCH-200W,LMCH-300W,LMCH-500W

Certificate Number : **M.2018.201.N6073**

Initial Assessment Date : 10.08.2018

Registration Date : 13.08.2018

Reissue Date/No :

Expiry Date : **12.08.2023**

Signature
UDEM International Certification
Auditing Training Centre Industry
and Trade Inc. Co.

The validity of the certificate can be checked through www.udem.com.tr. The CE mark shown on the right can only be used under the responsibility of the manufacturer with the completion of EC Declaration of Conformity for all the relevant Directives. This certificate remains the property of UDEM International Certification Auditing Training Centre Industry and Trade Inc. Co. to whom it must be returned upon request. The above-mentioned firm must keep a copy of this certificate for 15 years from the registration of certificate. This certificate only covers the product(s) stated above and UDEM must be notified in case of any changes on the product(s).
Address: Mithakere Mahallesi 2073 Sokak (Eski 93 Sokak) No:10 Çankaya - Ankara - TÜRKİYE
Phone: +90 0312 443 03 90 Fax: +90 0312 443 03 76
E-mail: info@udemtd.com.tr www.udem.com.tr



Certificate of Approval

Certificate No.: 10119Q12565R0M

Awarded to

**Carman Haas Laser Technology(SuZhou)
Co., Ltd.**

Organization Code Certificate No. / Unified Social Credit Code:91320594MA1MF4EP56
Add.:No.155, West Road Suhong, Suzhou Industrial Park, Suzhou City, Jiangsu Province, P.R. China. 215000

Beijing ZhongLianTianRun Certification Center (ZLTR) certify that the
Quality Management System of the above organization has been assessed and found to be
in accordance with the requirements of the standard:
GB/T19001-2016 / ISO9001:2015

SCOPE OF CERTIFICATION/REGISTRATION

The Research and Development and Production of Optics Lenses (Except the limits of national laws and regulations.)

This certificate is made valid when used with certification scopes and the requirements of applicable laws and regulations. These requirements include, but are not limited to, administrative permits, scopes of qualifications, and CCC requirements.

Subject to operation conditions in requirements conformity with Quality Management System.

This Certificate is valid for a period of three years only.

Date from: Mar 13th,2019 To: Mar 12th,2022

The effectiveness of this Certificate shall be Validated by periodic surveillance audit of ZLTR for maintenance.

Information of this certificate can be found on the official website of Beijing Zhonglian Tianrun Certification center (<http://www.zltr.com.cn>)

ISO 9001

ISO 9001



Beijing ZhongLianTianRun Certification Center

Room2003, 22nd Floor, 2nd Unit, Block 1, No.4 Yard, Qiyang Road, Chaoyang District, Beijing, P.R. China 100022

Information of the certificate can be found on the official website of Certification and Accreditation Administration of the People's Republic of China (<http://www.cnca.gov.cn>)



□ / □	□□□□□□ □□□	□□□□
	□□□□□□□□ □□□□□□ □□□□□ □□□□	1 □□□□□□
	□□□□□□□□ □□□□□□□□	
1.	□□□□□□□□ □□□□□□ □□□□	7pcs.
2.	□□□□□□□□ □□□□□ □□□□	5.PCS.
3.	googles □□□□□□ □□□□□	1064nm. 1 □□□□ □□□□

□□□□□□ □□□□□□ □□□□□ □□□ □□ □□ □□□□□ □□□□□□□□ :□□□□□□□□

Q1. XXXXXXXXXXXX XXXXXXXX XXXX XX

A1: XXXXXXXXXXXX XXXXXXXX XXXXXXXXXXXX XX XXXXX XXXXX XXXXXXXXXXXX XXXXXXXX XXXX XXXX.

Q2.How XXXXXXXXXXXXXXXX XXXXXXXX XXXX

A2: XXXXXXXXXXXX XX XXXXXXXXXXXXXXXX XXXXXXXXXXXX XXXX XXXXXXXX XXXXXXXXXXXXXXXX XXXXXXXXXXXX XXXXXXXXXXXX XXXXXXXX XXXXXXXX XXXXXXXXXXXXXXXX XXXXXXXXXXXXXXXX XXXXXXXXXXXXXXXX.

Q3.How XXXXXXXXXXXX XXXX

A3: XXXXXXXXXXXX XXXXXXXXXXXXXXXX XXXXXXXX XXXXXXXXXXXXXXXX XXXXXXXXXXXXXXXX XXXXXXXXXXXXXXXX XXXXXXXX XXXXX XXXX.

Q4.How XXXXXXXX XXXXXXXXXXXX

A4: XXXXXXXX XXXXXXXXXXXX XXXXXXXX XXXXXXXXXXXXXXXX XXXXXXXXXXXXXXXX XXXXXXXX XXXXXXXX XX XXXXXXXXXXXXXXXX XXXX XXXXXXXXXXXXXXXX XX XXXXXXXXXXXXXXXX XX XXXXXXXX .XXXXXXXXX XXXX XXXX XXXX XXXXXXXXXXXXXXXX XXXXXXXXXXXXXXXX XXXXXXXXXXXXXXXX XXXXXXXX.

Q5.May XXXXXXXXXXXXXXXX XXXX XXXXXXXXXXXXXXXX XXXXXXXXXXXXXXXX XXXXXXXX

A5: XXXXXXXXXXXXXXXX XXXXXXXXXXXXXXXX XXXXXXXX XXXXXXXXXXXXXXXX XXXXXXXXXXXXXXXX XXXXXXXXXXXXXXXX XXXX XXXXXXXXXXXXXXXX XXXXXXXX !XXXX.

q6.can XXXX XXXXXXXXXXXXXXXX XXXXXXXXXXXXXXXX XXXXXXXX

A6: XX XXXXXXXXXXXXXXXX XXXX XX XXXXXXXXXXXXXXXX XXXXXXXXXXXXXXXX XXXX XXXX XXXXXXXXXXXXXXXX XXXXXXXX.

Q7.How XXXXXXXXXXXX XXXX XXXXXXXXXXXXXXXX XX OEM XX ODM

A7: XXXXXXXXXXXX XXXXXXXXXXXXXXXX XXXXXXXXXXXXXXXX XXXXXXXXXXXXXXXX OEM / ODM ORDerS. XXXXXXXXXXXXXXXX XXXX XXXXXXXXXXXXXXXX XX XXXX XXXXXXXXXXXXXXXX XXXXXXXX XXXXXXXXXXXXXXXX XXXXXXXXXXXXXXXX XXXXXXXX XXXXXXXX XX.

q8. XXXXXXXXXXXXXXXX XXXX XXXXXXXX XX XXXX XXXX

A8: XXXXXXXX XX XXXXXXXXXXXXXXXX XXXXXXXX T / T XXXX XXXX XXXXXXXXXXXXXXXX XXXXXXXX XXXXXXXXXXXXXXXX XXXXXXXXXXXXXXXX XXXXXXXX XXXXXXXX.