

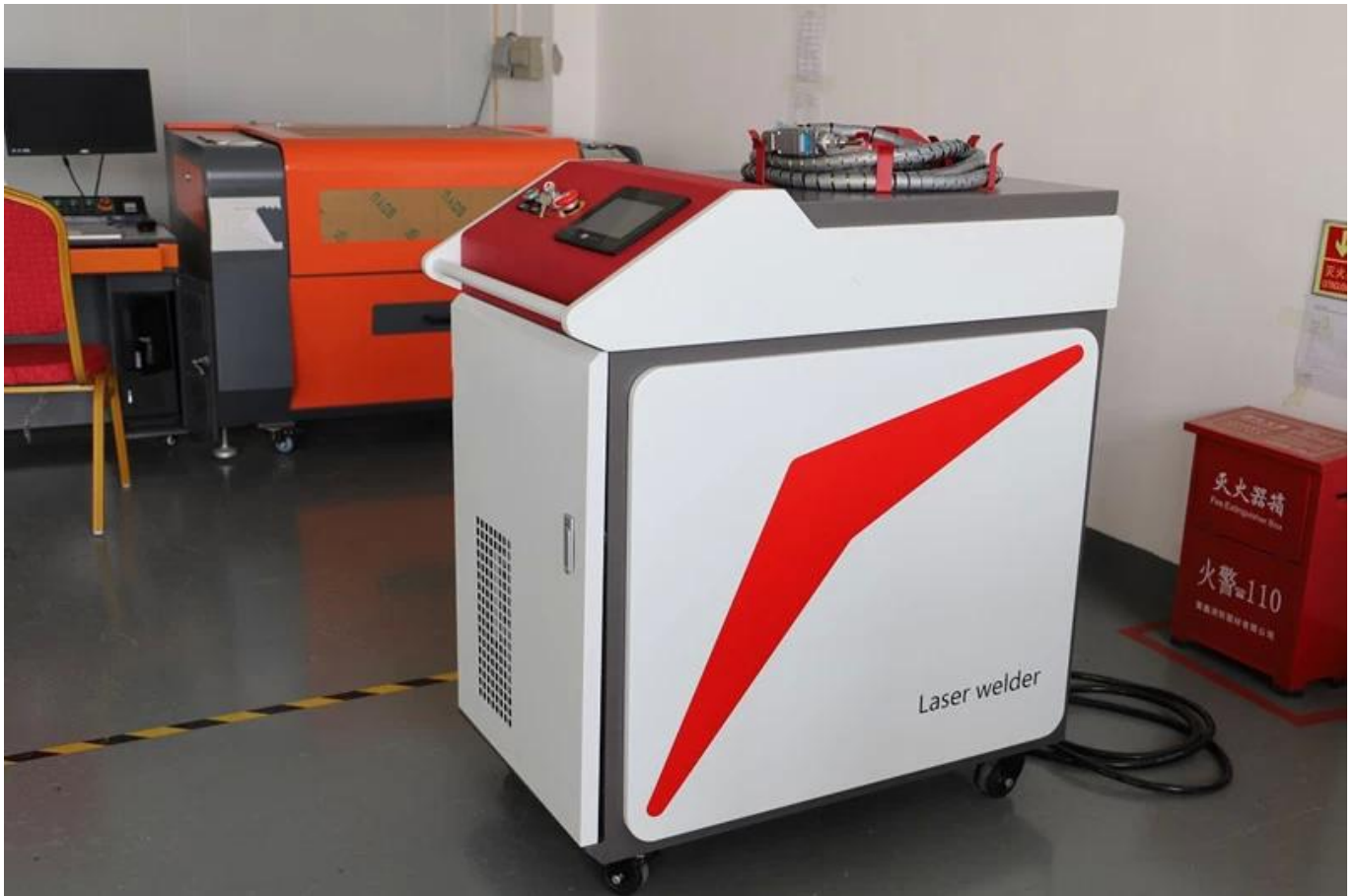
1. 設備名稱

設備名稱：

本設備為一種非接觸式激光焊接設備，適用於各種金屬材料的焊接。其特點是精度高、速度快、無煙塵、無火花，且操作簡便。該設備廣泛應用於汽車製造、機械加工、電子工業等領域。

[http://www.laserwelder.com](#)，該設備具有多種規格，可滿足不同尺寸和厚度的工件需求。其操作界面友好，用戶可通過觸摸屏進行參數設置和監控。此外，該設備還配備了先進的安全保護系統，確保操作人員的安全。該設備的優點包括：1. 精度高，焊接縫寬窄均勻；2. 速度快，生產效率高；3. 無煙塵，改善工作環境；4. 無火花，減少對工件的損傷；5. 操作簡便，易於維護。

[http://www.laserwelder.com](#) 1000 型號設備，適用於各種金屬材料的焊接。

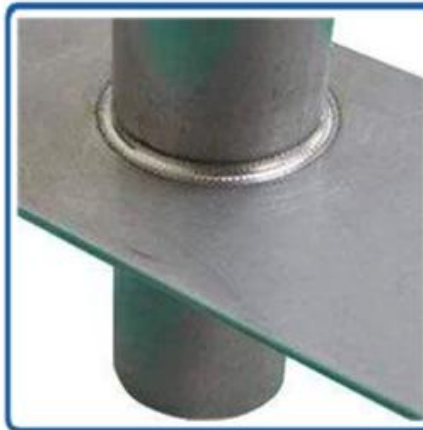
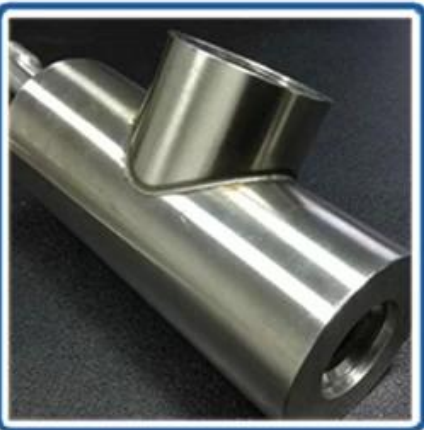
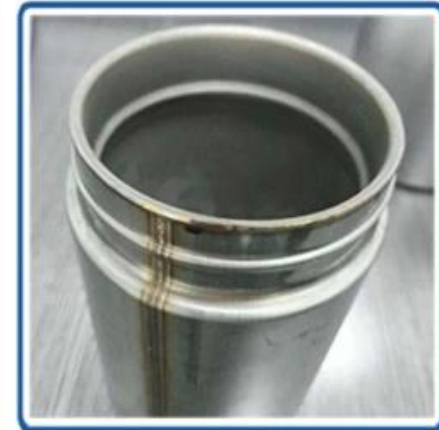
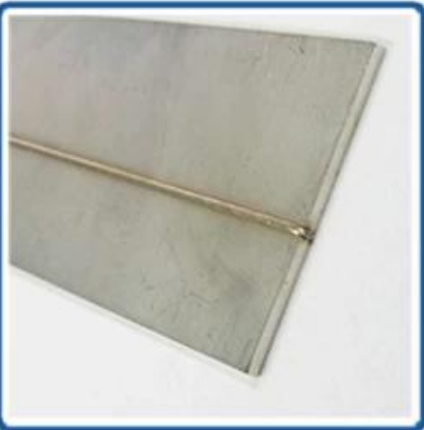


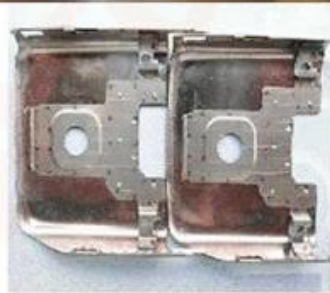




□□□□□ □□□□□□□:

□□□□□:	CHLW-1000 □□□ / 1500W / 2000W
□□□□ □□□□□	1000 □□□ / 1500W / 2000W
□□□□ □□□ □□ □□□□□ (□□□□)	Raycus: 1080 ± 5 / IPG: 1070 ± 10
□□□□ □□□□□□□	□□□□ / □□□□□
□□□□□□□□□ □□ □□□ (□□□□□ / s)	0-120
□□□□□□□□□ □□□	□□□□ □□□□□ □□ □□□□□ □□ ≤ 1/5
□□□□□ □□□□□□□□□ (□□□□)	0.5 ~ 4 □□□□□□□ □□□□□□□ □□ □□□□□□□□ □□□□□; 0.5 ~ 3 □□□□□□□□□□□□
□□□□□□ □□□□□□ (□□)	□□□□□□□□□□ 10













PerkinElmer Lambda 950---Testing Transmission and Reflectivity



□□□□□□□□ □□ □□□□□□□□



CERTIFICATE

ATTESTATION CERTIFICATE OF MACHINERY AND LOW VOLTAGE DIRECTIVES

Technical file of the company mentioned below has been observed and audit has been completed successfully. 2006/42/EC Machinery Directive and 2014/ 35/EU Low Voltage Directive have been taken as references for these processes

Company Name : **Camman HAAS Laser Technology (Suzhou) Co., Ltd.**

Company Address : No 155, West Road Suhong, Suzhou Industrial Park, Suzhou City, Jiangsu , P.R.China

Related Directives and Annex : **Low Voltage Directive 2014/35/EU
Machinery Directive 2006/42/EC**

Related Standards : **EN ISO 12100:2010; EN 60204-1:2006+A1:2009+AC:2010**

Product Name : **Laser Marking Machine**

Report No and Date : SD-90049717.09.08.2018

Product Brand/Model/Type : LMCH-3W,LMCH-5W,LMCH-10W,LMCH-15W,LMCH-20W,LMCH-25W,
LMCH-30W,LMCH-50W,LMCH-60W,LMCH-70W,LMCH-100W,
LMCH-120W,LMCH-150W,LMCH-200W,LMCH-300W,LMCH-500W

Certificate Number : **M.2018.201.N6073**

Initial Assessment Date : 10.08.2018

Registration Date : 13.08.2018

Reissue Date/No :

Expiry Date : **12.08.2023**

Signature
UDEM International Certification
Auditing Training Centre Industry
and Trade Inc. Co.



The validity of the certificate can be checked through www.udem.com.tr. The CE mark shown on the right can only be used under the responsibility of the manufacturer with the completion of EC Declaration of Conformity for all the relevant Directives. This certificate remains the property of UDEM International Certification Auditing Training Centre Industry and Trade Inc. Co. to whom it must be returned upon request. The above-mentioned firm must keep a copy of this certificate for 15 years from the registration of certificate. This certificate only covers the product(s) stated above and UDEM must be notified in case of any changes on the product(s).
Address: Murkazeri Mahallesi 2073 Sokak (Eski 93 Sokak) No:10 Çankaya - Ankara - TÜRKİYE
Phone: +90 0312 443 03 90 Fax: +90 0312 443 03 76
E-mail: info@udemtd.com.tr www.udem.com.tr



Certificate of Approval

Certificate No.: 10119Q12565ROM

Awarded to

**Carman Haas Laser Technology(SuZhou)
Co., Ltd.**

Organization Code Certificate No. / Unified Social Credit Code:91320594MA1MF4EP56
Add.:No.155, West Road Suhong, Suzhou Industrial Park, Suzhou City, Jiangsu Province, P.R. China. 215000

Beijing ZhongLianTianRun Certification Center (ZLTR) certify that the
Quality Management System of the above organization has been assessed and found to be
in accordance with the requirements of the standard:
GB/T19001-2016 / ISO9001:2015

SCOPE OF CERTIFICATION/REGISTRATION

The Research and Development and Production of Optics Lenses (Except the limits of national laws and regulations.)

This certificate is made valid when used with certification scopes and the requirements of applicable laws and regulations. These requirements include, but are not limited to, administrative permits, scopes of qualifications, and CCC requirements.

Subject to operation conditions in requirements conformity with Quality Management System.

This Certificate is valid for a period of three years only.

Date from: Mar 13th,2019 To: Mar 12th,2022

The effectiveness of this Certificate shall be Validated by periodic surveillance audit of ZLTR for maintenance.

Information of this certificate can be found on the official website of Beijing Zhonglian Tianrun Certification center (<http://www.zltr.com.cn>)



Beijing ZhonglianTianrun Certification Center

Room2003, 22nd Floor, 2nd Unit, Block 1, No.4 Yard, Qiyang Road, Chaoyang District, Beijing, P.R. China 100022

Information of the certificate can be found on the official website of Certification and Accreditation Administration of the People's Republic of China (<http://www.cnca.gov.cn>)

ISO 9001

ISO 9001



□□□□□□ □□□□

□□ / □□	□□□□ □□□		□□□□□□
	Hanheld □□□□□□□□ □□□□	Carmanhaas	1 □□□
□□: □□□□□ □□□□□ □□□□□			
1	□□□□□□□□□□ □□□□		2 □□□□□□
2	□□□		□□□
3	□□□□□□□□ □□□ □□□□		1 □□□
4	□□□□□□□□□□ □□ □□□□□□□□□□ □□ □□□□ □□□□□ □□□□□□□□		□□ □□□□□□
5	□□□□ □□□□□□□□□□□□ Googles	1064 □□□□	□□ □□□□□□

□□□□□□ □□□□□:	□□ □□□□□ □□ □□□□□ □□□ □□ □□□
□□□ □□□□□ □□ □□□□□:	110x64x48cm
□□□ □□□ □□□	264 □□□□
□□□□□□□ □□ □□□ :	□□□□□ □□□□□□ □□□□□□□ □□□□ □□ □□□ 2-5 □□□□□ □□□ □□□ □□□□ □□□





□□□□ □□□□:

□□□□□□ □□ □□□□□□□□ □□□□ □□□□□:

- 1) □□ □□□□□□□□ □□□□ □□ □□□□ □□□□□□ □□□□□□
- 2) □□□□ □□□□ □□□□ □□□□□□ □□ □□□□ □□□□ □□□□ □□ □□□□ □□□□□□ □□□□□□
- 3) □□□□ □□□□ □□□□ □□ □□□□□□□□□□ □□□□ □□□□ □□□□□□
- 4) □□□□ □□□□□□□□□□□□ □□ □□□□□□ □□ □□□□ □□□□ □□□□□□

□□□:

□□□□□□□□ □□□□□ □□□ □□□□□□□□, □□□□□□□□, □□□□□□□□, □□□□□□□□, □□□□□□ □□□□□□□□

□□□□□ □□□□□ □□□□□□□□ □□ □□□□, □□□□□□□□ □□ □□□□□ □□ □□□□□□ □□□□□□□□□□□□, □□□□ □□□□□ □□ □□□□ □□□□□□□□ □□□□□□□□ □□□□□□□□, □□□□□□□□ □□ □□□□ □□□□ □□□□ □□□□

QUESTION 1. How long have you been in business?

A 1: 10 years, we started in 2014 and have been growing steadily since then.

QUESTION 2. What is your primary product line?

A 2: Our primary product line is custom printed t-shirts, hoodies, and sweatshirts. We also offer a variety of other apparel items such as tank tops, long sleeves, and shorts.

QUESTION 3. How do you source your materials?

A 3: We source our materials from a variety of suppliers, including local manufacturers and international suppliers. We work closely with our suppliers to ensure quality and timely delivery.

QUESTION 4. How do you market your products?

A 4: We market our products through a combination of online and offline channels. We use social media, email marketing, and search engine optimization to reach our target audience. We also participate in trade shows and events to promote our brand.

Q5. May I know your current sales volume and revenue?

A 5: Yes! Our current sales volume is approximately 50,000 units per month, with a revenue of around \$1,000,000.

QUESTION 6. How do you manage your inventory?

A 6: We use a just-in-time inventory management system to ensure that we have the right amount of stock on hand at all times. We also work closely with our suppliers to ensure timely delivery of materials.

QUESTION 7. How do you handle OEM / ODM orders?

A 7: We handle OEM / ODM orders through a dedicated team of sales and production staff. We work closely with our clients to understand their requirements and provide a high-quality, customized solution. We also offer a variety of services such as design, printing, and fulfillment.

Q8. How do you handle customer complaints and returns?

A 8: We have a dedicated customer service team that handles all customer complaints and returns. We strive to provide a high level of customer satisfaction and ensure that all issues are resolved quickly and efficiently. We also offer a 30-day return policy for all our products.