



Product Description:

This product is designed for high-precision impact testing. It features a robust frame, a high-speed actuator, and a precision impactor head. The testing chamber is equipped with safety interlocks and a data acquisition system for real-time monitoring. The impact force is controlled by a programmable power supply, and the impact angle is adjustable. The system is compliant with ISO 18433 and ASTM E966 standards. Impaction

Carmanhaas provides a comprehensive range of impact testing solutions, including impactors, anvils, and testing fixtures. Our products are used in various industries, including automotive, aerospace, and materials research. We offer custom design services and technical support to meet your specific requirements. Our impact testing systems are known for their accuracy, reliability, and ease of use. The impact force is measured using a piezoelectric transducer, and the impact angle is controlled by a motorized actuator. The system is equipped with a galvanometer for precise force control. The testing chamber is made of stainless steel to ensure durability and hygiene. The data acquisition system is integrated with a THETA camera for high-speed imaging of the impact event. (Additional details and specifications are available in the product manual.)

Specifications:

- (1) Spot height consistency $< \lambda/5$, the assembly scheme of the objective lens is required to ensure the height of the spot is consistent;
- (2) Impact force repeatability $> 95\%$;
- (3) Spot diameter $< 0.5\text{mm}$;
- (4) Impact force accuracy $> 1.05\%$

Product Features: **ITO** coating, high precision, reliable, easy to use, compact design, and fast setup.



□□□□□ □□□□□□:

1064nm □□ □□□□ □□□□

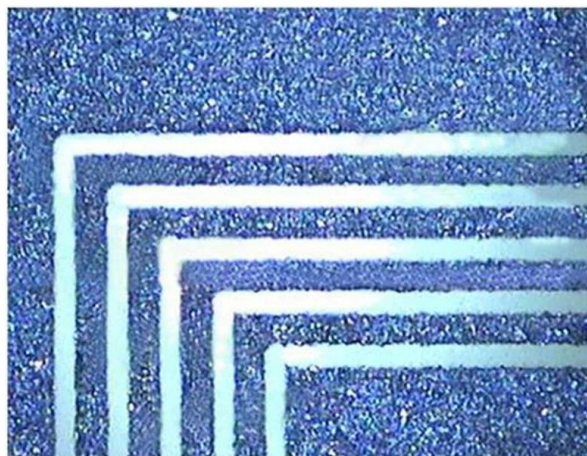
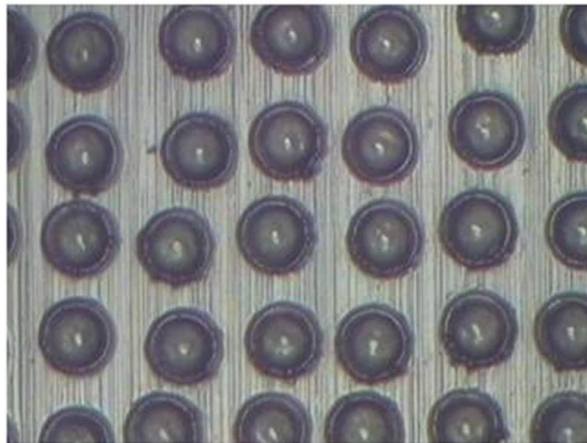
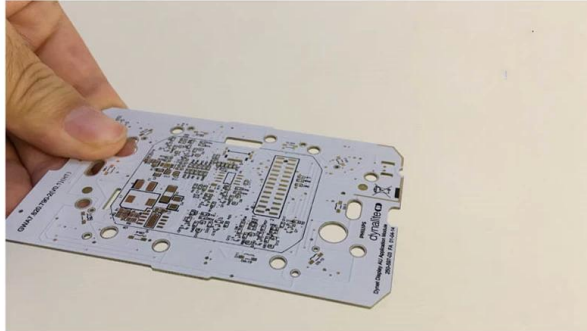
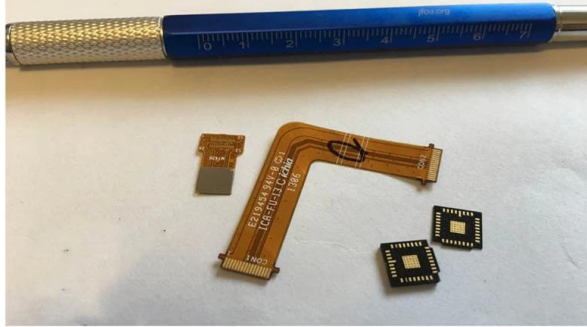
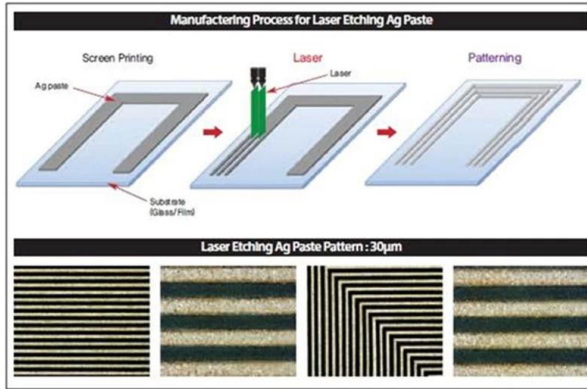
□□□ □□ □□□□□	□□□□ □□□□□□(□□□□)	□□□□□ □□□□□ (□□□□)	□□□□□ □□□□□□ □□□□□ (□□□□)	□□□□□□□ □□□□ (□□□□)	□□□□□ □□□□
SL-1064-140-200	200	140x140	14	208	M85x1
SL-1064-185-255- (16CA)	255	185x185	16	274	M85x1

1064nm □□□ Expander

Part Description	Expansion Ratio	Input CA (mm)	Output CA (mm)	Housing Dia (mm)	Housing Length (mm)	Mounting Thread
BE-1064-D23:40.5-1.5x	1.5X	10	20.7	27	40.5	M22*0.75
BE4-(1030-1090)-D35:163.9-Z14x	1X-4X	20	35	44	163.9	/
BE4-(1030-1090)-D34:162.6-Z210x	2X-10X	14	34	40	162.6	/

1064nm □□□□

□□□□□ (□□□□)	□□□□□ (□□□□)	□□□□
25.4	6.35	□□□□ □□□□□□ @ 1030-1090nm, 45 ° AOI
30	5	□□□□ □□□□□□ @ 1030-1090nm, 45 ° AOI
50	10	□□□□ □□□□□□ @ 1030-1090nm, 45 ° AOI

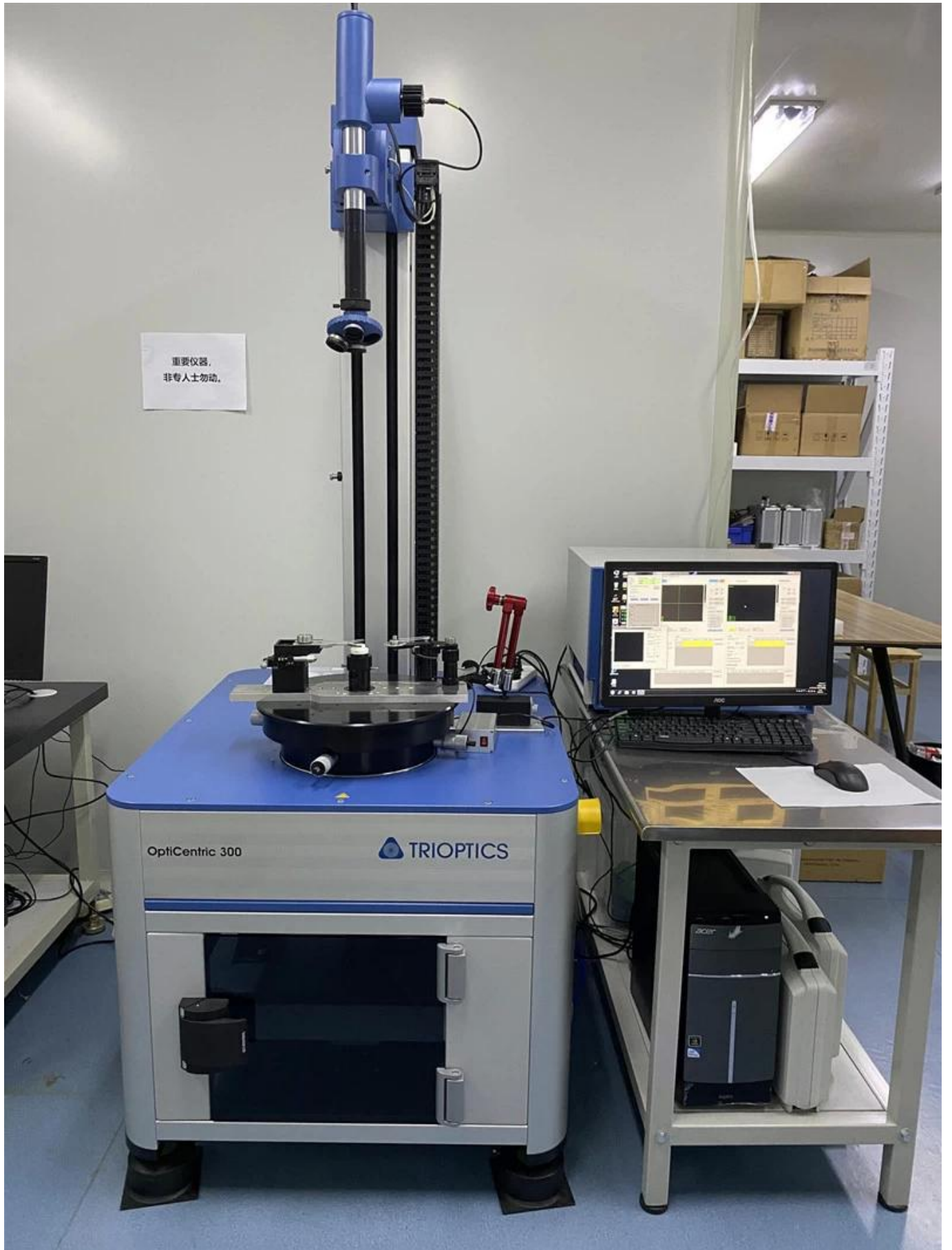




Factory



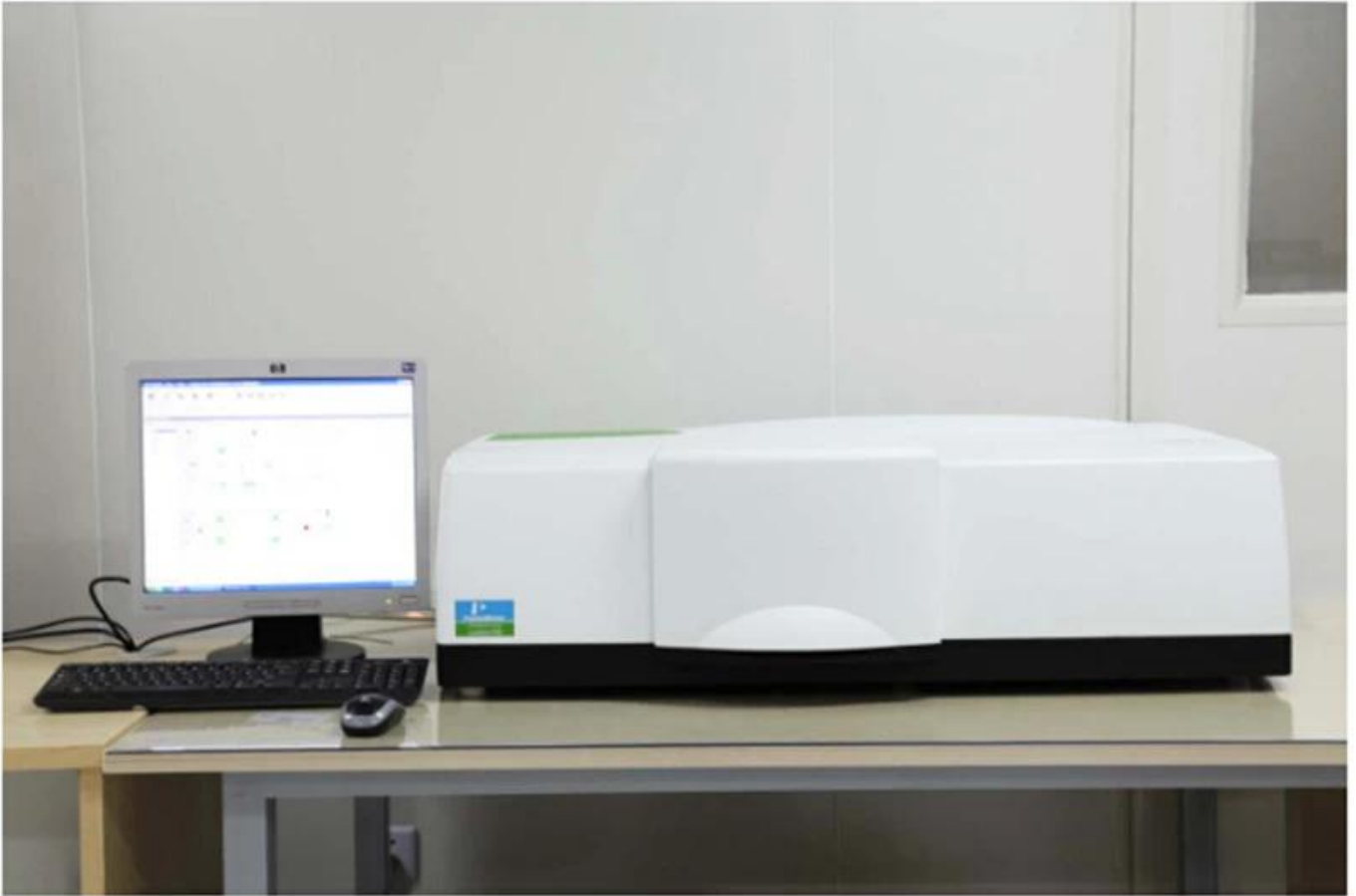




重要仪器,
非专业人士勿动。

OptiCentric 300

TRIOPTICS



PerkinElmer Lambda 950---Testing Transmission and Reflectivity







C E R T I F I C A T E

ATTESTATION CERTIFICATE OF MACHINERY AND LOW VOLTAGE DIRECTIVES

Technical file of the company mentioned below has been observed and audit has been completed successfully. 2006/42/EC Machinery Directive and 2014/35/EU Low Voltage Directive have been taken as references for these processes

Company Name : **Camnan HAAS Laser Technology (Suzhou) Co., Ltd.**

Company Address : No 155, West Road Suhong, Suzhou Industrial Park, Suzhou City, Jiangsu , P.R.China

Related Directives and Annex : **Low Voltage Directive 2014/35/EU
Machinery Directive 2006/42/EC**

Related Standards : **EN ISO 12100:2010; EN 60204-1:2006+A1:2009+AC:2010**

Product Name : **Laser Marking Machine**

Report No and Date : SD-90049717:09.08.2018

Product Brand/Model/Type : LMCH-3W,LMCH-5W,LMCH-10W,LMCH-15W,LMCH-20W,LMCH-25W,
LMCH-30W,LMCH-50W,LMCH-60W,LMCH-70W,LMCH-100W,
LMCH-120W,LMCH-150W,LMCH-200W,LMCH-300W,LMCH-500W

Certificate Number : **M.2018.201.N6073**

Initial Assessment Date : 10.08.2018

Registration Date : 13.08.2018

Reissue Date/No :

Expiry Date : **12.08.2023**

U. Bayraktar
UDEM International Certification
Auditing Training Centre Industry
and Trade Inc. Co.

The validity of the certificate can be checked through www.udem.com.tr. The CE mark shown on the right can only be used under the responsibility of the manufacturer with the completion of EC Declaration of Conformity for all the relevant Directives. This certificate remains the property of UDEM International Certification Auditing Training Centre Industry and Trade Inc. Co. to whom it must be returned upon request. The above named firm must keep a copy of this certificate for 15 years from the registration of certificate. This certificate only covers the product(s) stated above and UDEM must be noticed in case of any changes on the product(s)
Address: Mulkikent Mahallesi 2073 Sokak (Eski 93 Sokak) No:10 Çankaya - Ankara - TÜRKİYE
Phone: +90 0312 443 03 90 Fax: +90 0312 443 03 70
E-mail: info@udemtd.com.tr www.udem.com.tr



Certificate of Approval

Certificate No.: 10119Q12565ROM

Awarded to

**Carman Haas Laser Technology(SuZhou)
Co., Ltd.**

Organization Code Certificate No. / Unified Social Credit Code:91320594M1MF4EP56
Add.:No.155, West Road Suhong, Suzhou Industrial Park, Suzhou City, Jiangsu Province, P.R. China. 215000

Beijing ZhongLian TianRun Certification Center (ZLTR) certify that the
Quality Management System of the above organization has been assessed and found to be
in accordance with the requirements of the standard:
GB/T19001-2016 / ISO9001:2015

SCOPE OF CERTIFICATION/REGISTRATION
The Research and Development and Production of Optics Lenses (Except the limits of
national laws and regulations.)

This certificate is made valid when used with certification scopes and the requirements of applicable
laws and regulations. These requirements include, but are not limited to, administrative permits,
scopes of qualifications, and CCC requirements.

Subject to operation conditions in requirements conformity with Quality Management System,

This Certificate is valid for a period of three years only,
Date from: Mar 13th,2019 To: Mar 12th,2022

The effectiveness of this Certificate shall be Validated by periodic surveillance audit
of ZLTR for maintenance.

Information of this certificate can be found on the official website of Beijing Zhonglian Tianrun
Certification center (<http://www.zltr.com.cn>)

ISO 9001

ISO 9001



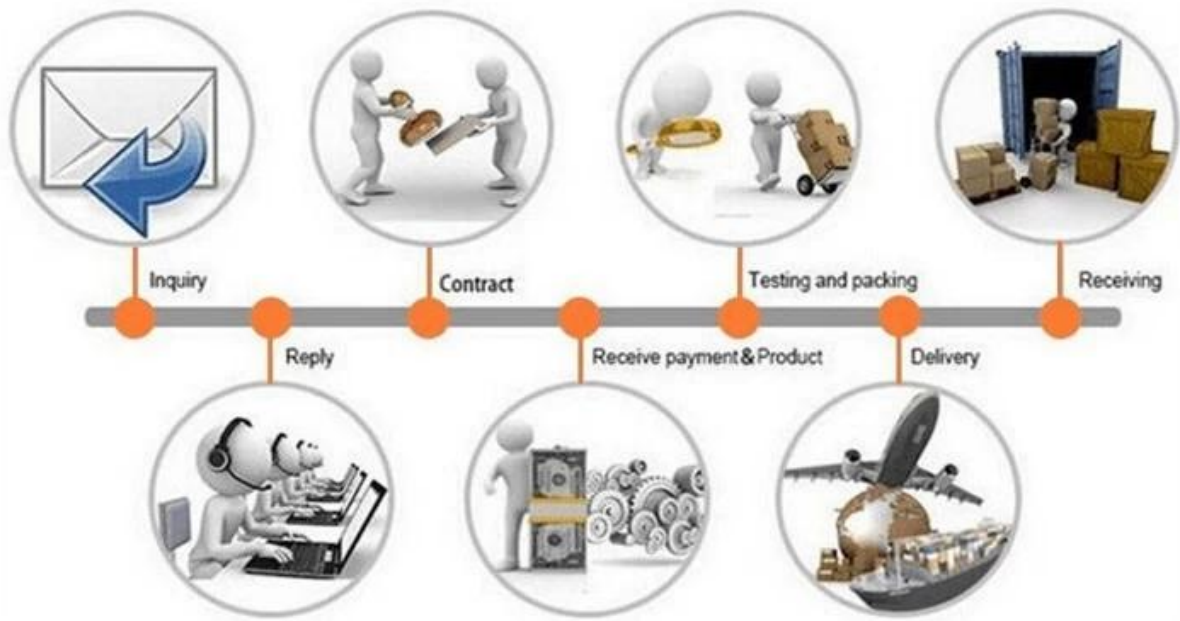
Beijing Zhongliantianrun Certification Center

Room2603, 22nd Floor, 2nd Unit, Block 1, No.4 Yard, Qiyang Road, Chaoyang District, Beijing, P.R. China 100102

Information of this certificate can be found on the official website of Certification and Accreditation Administration of the People's Republic of China (<http://www.cnca.gov.cn>)



Packing List



□□□□ □□□:

□□□□□ □□□□□ □□□ □□□□□:

- 問題 1) どの国に製品を送るのか
- 問題 2) 製品を送るのにどの方法を選ぶのか
- 問題 3) どの国に製品を送るのか
- 問題 4) どの国に製品を送るのか

回答:

- (1) どの国に製品を送るのか、どの国に製品を送るのか、どの国に製品を送るのか、FedEx、DHL、UPS、EAS
- (2) どの国に製品を送るのか、どの国に製品を送るのか、どの国に製品を送るのか、CNF、CIP、CPT、CMAF、CMAI、CMT、CMAH、CMAJ、CMAK、CMAO、CMAQ、CMAU、CMAV、CMAW、CMAZ

 **FAQ**

問題 1) Are you a manufacturer?

A1: Yes, we are a manufacturer. We have been producing these products for many years and have a good reputation in the market.

問題 2) How do you control the quality?

A2: We have a strict quality control system. We use high-quality materials and employ professional QC staff to inspect every product before shipping. We also have a good relationship with our suppliers to ensure the quality of the raw materials.

問題 3) How do you ship the goods?

A3: We can ship by air or sea. Air shipping is faster but more expensive. Sea shipping is slower but more economical. We will recommend the best shipping method based on your requirements.

問題 4) How do you handle the payment?

A4: We accept various payment methods including T/T, L/C, and Western Union. We have a good credit record and can provide various payment terms to meet your needs.

問題 5) May I visit your factory?

A5: Yes! We welcome you to visit our factory. Our factory is located in [Location] and is equipped with modern production facilities.

問題 6) Can you accept OEM/ODM orders?

A6: Yes, we can accept OEM/ODM orders. We have a professional design team and can provide various customization services for our customers.

問題 7) How do you handle OEM and ODM orders?

A7: For OEM orders, we will produce according to your design and requirements. For ODM orders, we will provide our own design and products. We can also provide OEM/ODM services for other products.

問題 8) What is your lead time?

□ 8: □□ □□ □□□□□ □□□□□ □□ □□□□ □□□□ / □□ □□□□□ □□□□ □□ □□□□□□ □□□□ □□ □□□□□□□□ □□□□ □□ □□□□ □□ □□□□□□□□ □□□□