



□□□□□ □□□□□:

1064 □□□□ □□-□□□□ □□□□

□□□ □□□□□	□□□□ □□□□□□(□□□□)	□□□□□ □□□□□□□ (□□□□)	□□□□□ □□□□□□□ □□□□□ (□□□□)	□□□□□ □□□□ (□□□□)	□□□□□ □□□□□
□□□□ -1064-140-200	200	140x140	14	208	M85x1
SL-1064-185-255- (16ca)	255	185x185	16	274	M85x1

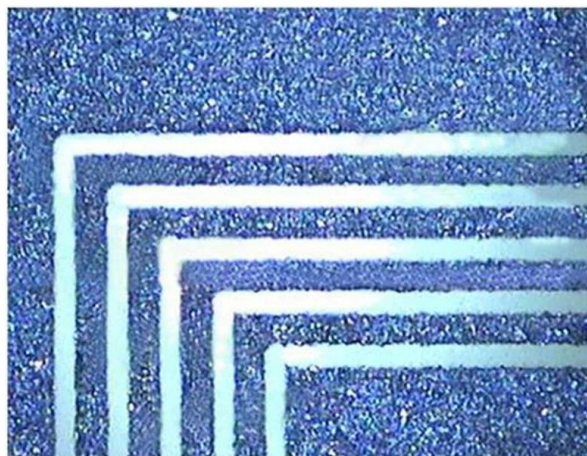
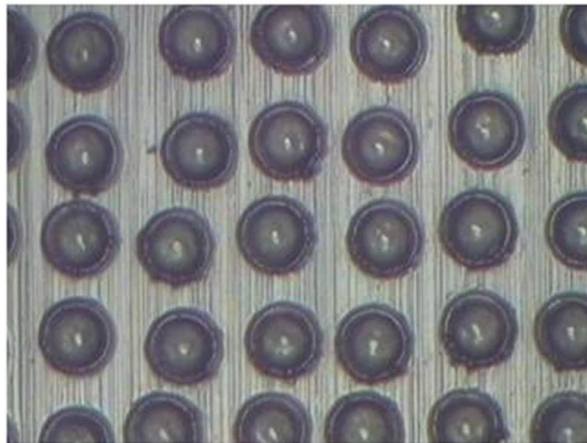
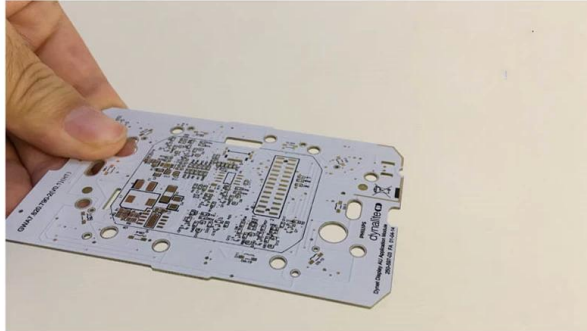
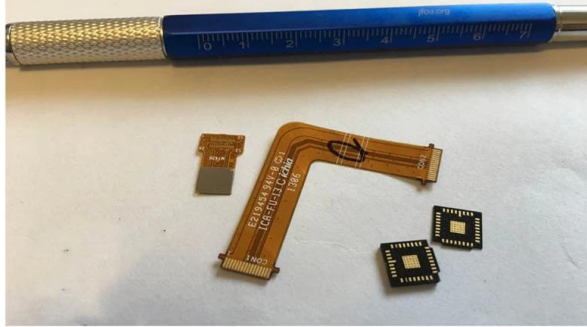
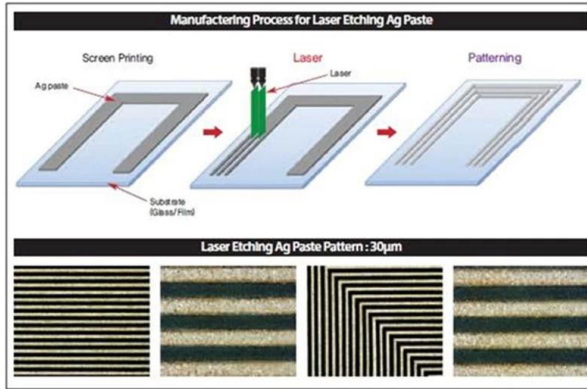
1064 □□□□ □□□ □□□□□□□□□□

Part Description	Expansion Ratio	Input CA (mm)	Output CA (mm)	Housing Dia (mm)	Housing Length (mm)	Mounting Thread
BE-1064-D23:40.5-1.5x	1.5X	10	20.7	27	40.5	M22*0.75
BE4-(1030-1090)-D35:163.9-Z14x	1X-4X	20	35	44	163.9	/
BE4-(1030-1090)-D34:162.6-Z210x	2X-10X	14	34	40	162.6	/

1064 □□□□ □□□□

□□□□□ (□□□□)	□□□□□ (□□□□)	□□□□
25.4	6.35	□□□□ @ 1030-10 9 0 □□□□, 45 □□□□□□□ Aoi
30	5	□□□□ @ 1030-10 9 0 □□□□, 45 □□□□□□□ Aoi
50	10	□□□□ @ 1030-10 9 0 □□□□, 45 □□□□□□□ Aoi

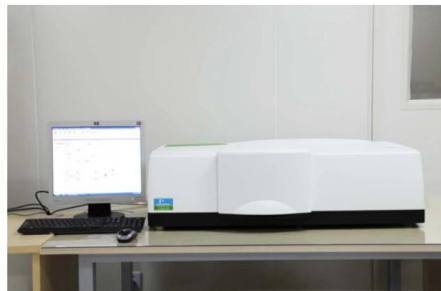
□□□□ □□□□□ □□□□ □□□□ □□□□□□□□□□ □□□□







TRIOPTICS OptiSpheric 2000 AF
---Testing EFL, R, Centering Error, Wedge Angle, BFL, MTF

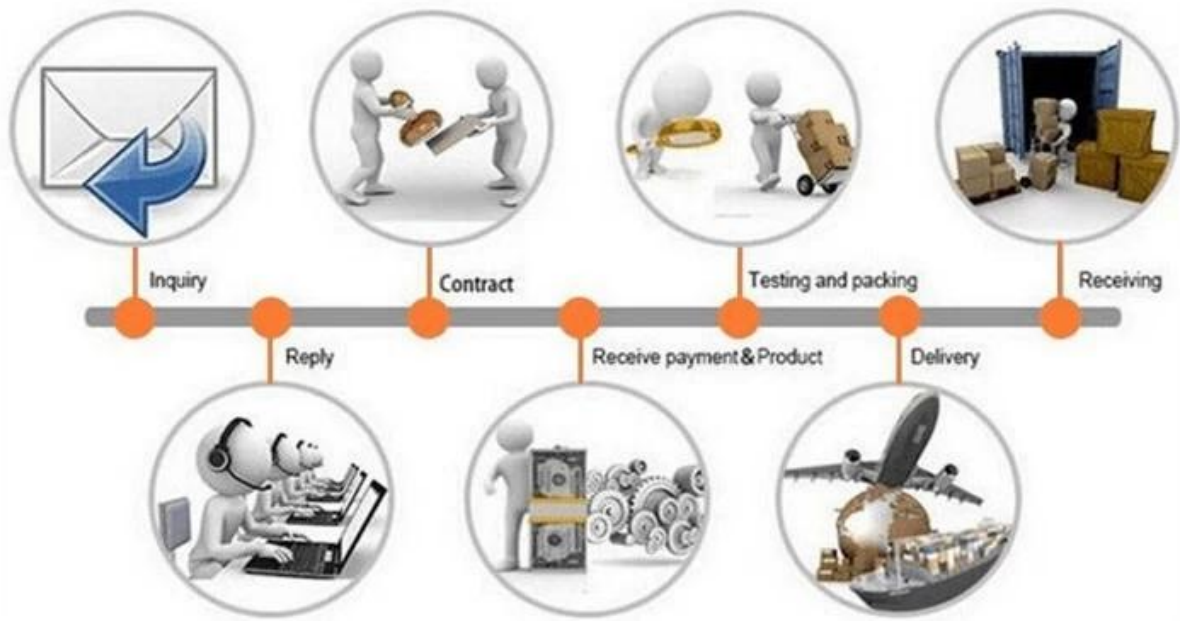


PerkinElmer Lambda 950---Testing Transmission and Reflectivity



Carmanhaas Coating Machine





□□□□ □□□:

□□□□□ □ □□□□□□□ □□□ □□□□:

