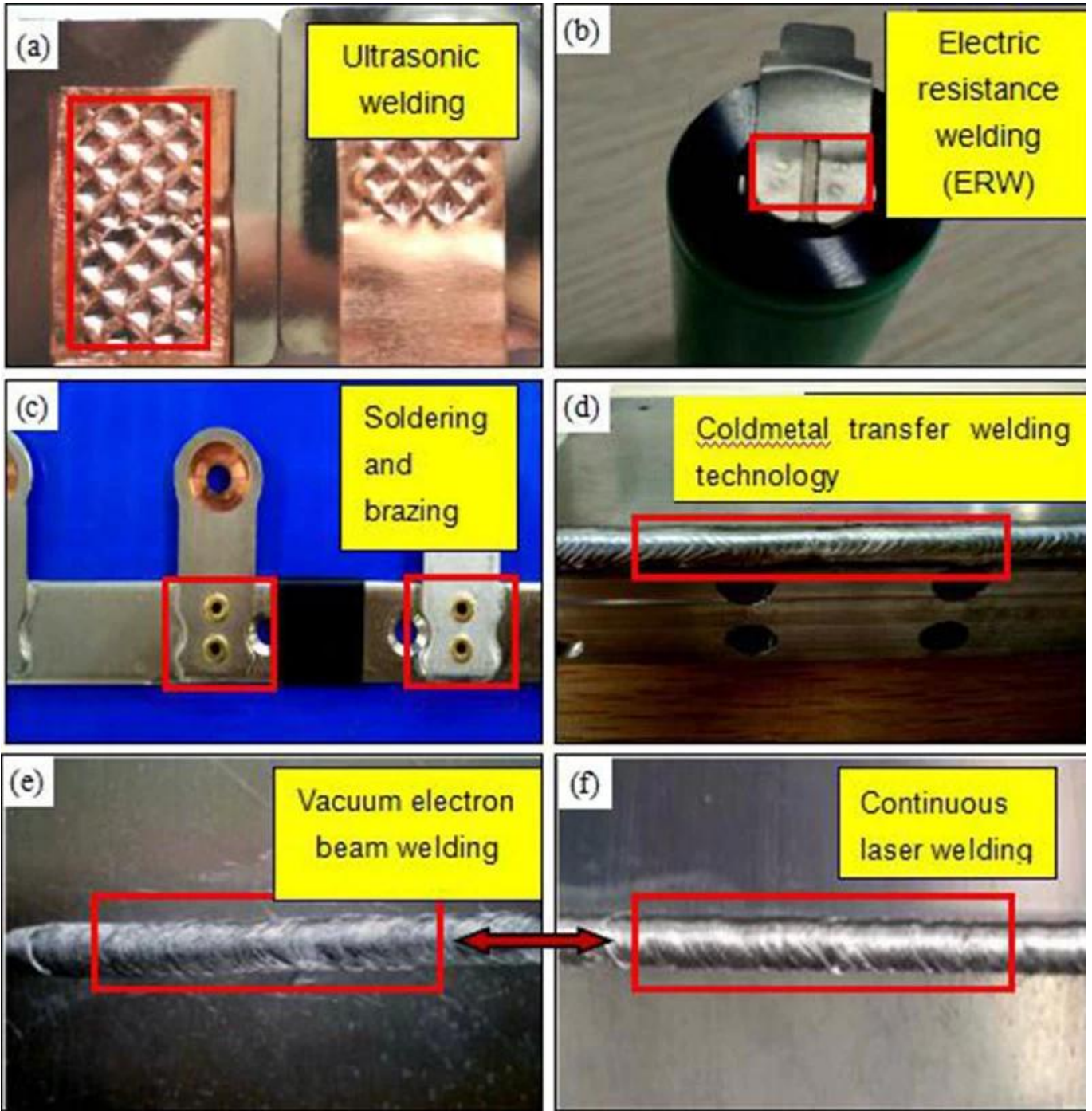


ይህ ጽሑፍ ለግብርና ጽ/ቤት የሚያስፈልገውን መረጃ ያስገኛል። ግብርና ጽ/ቤት የሚሰጠውን አገልግሎት ለማረጋገጥ ለዚህ ጽሑፍ ላይ የሚያስፈልገውን መረጃ ያስገኛል። (የግብርና ጽ/ቤት ድንጋጤዎች)

ግብርና ጽ/ቤት የሚሰጠውን አገልግሎት ለማረጋገጥ ለዚህ ጽሑፍ ላይ የሚያስፈልገውን መረጃ ያስገኛል። ግብርና ጽ/ቤት የሚሰጠውን አገልግሎት ለማረጋገጥ ለዚህ ጽሑፍ ላይ የሚያስፈልገውን መረጃ ያስገኛል።

ግብርና ጽ/ቤት የሚሰጠውን አገልግሎት ለማረጋገጥ ለዚህ ጽሑፍ ላይ የሚያስፈልገውን መረጃ ያስገኛል። ግብርና ጽ/ቤት የሚሰጠውን አገልግሎት ለማረጋገጥ ለዚህ ጽሑፍ ላይ የሚያስፈልገውን መረጃ ያስገኛል።

ግብርና ጽ/ቤት የሚሰጠውን አገልግሎት ለማረጋገጥ ለዚህ ጽሑፍ ላይ የሚያስፈልገውን መረጃ ያስገኛል። ግብርና ጽ/ቤት የሚሰጠውን አገልግሎት ለማረጋገጥ ለዚህ ጽሑፍ ላይ የሚያስፈልገውን መረጃ ያስገኛል።



- (a) 銅網の超音波溶接;
- (b) 電抵抗溶接 (ERW) のワイヤ;
- (c) 銅部品へのハンダ付けとろう付け;
- (d) 冷金属転移溶接技術のワイヤ;
- (e) 真空電子ビーム溶接のワイヤ;
- (f) 連続レーザー溶接のワイヤ

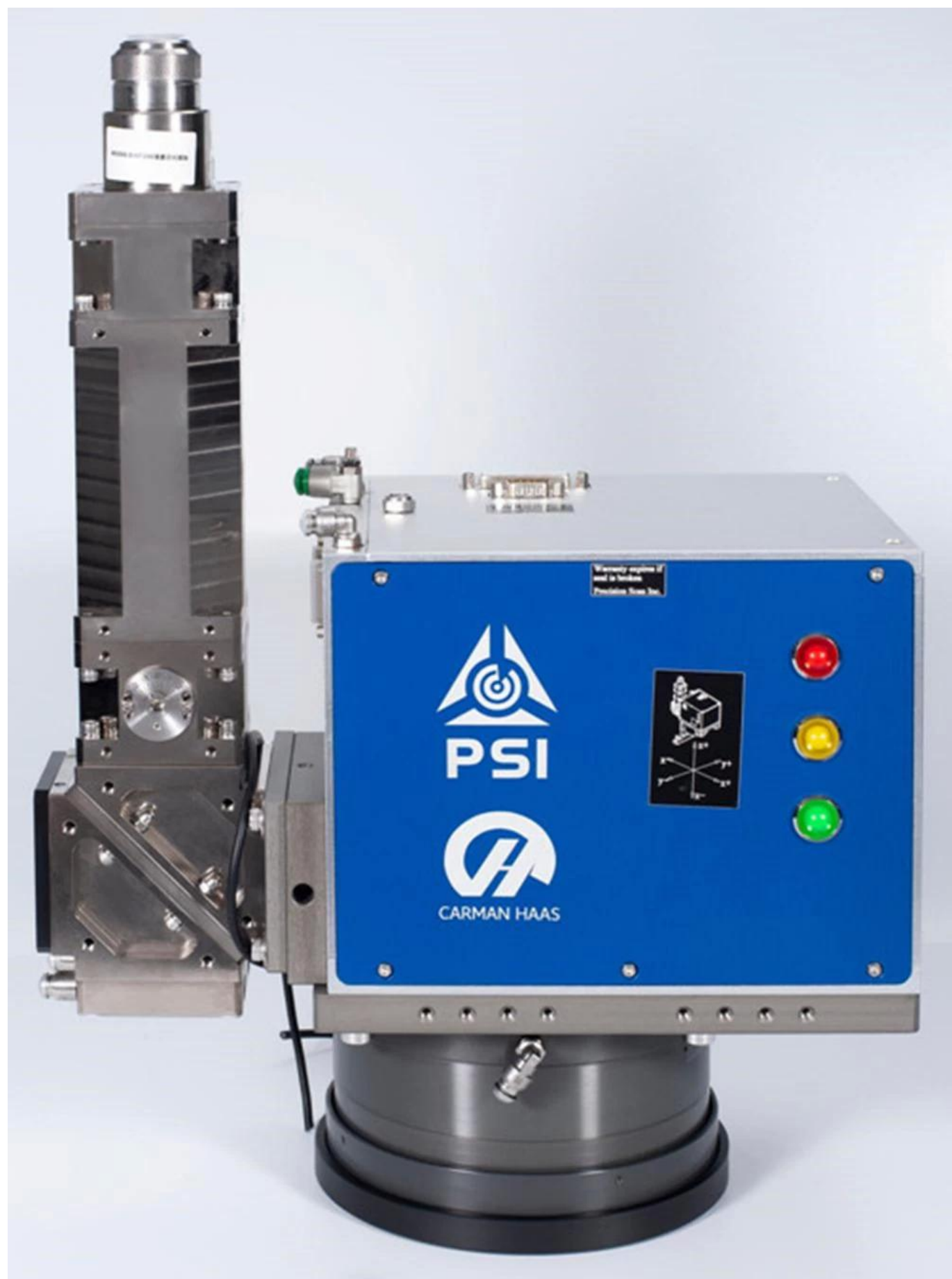
溶接条件の比較:

1. 温度範囲: 1030 ~ 1090 °C;
2. 電力: 4000-6000W;
3. 電力: 2500W

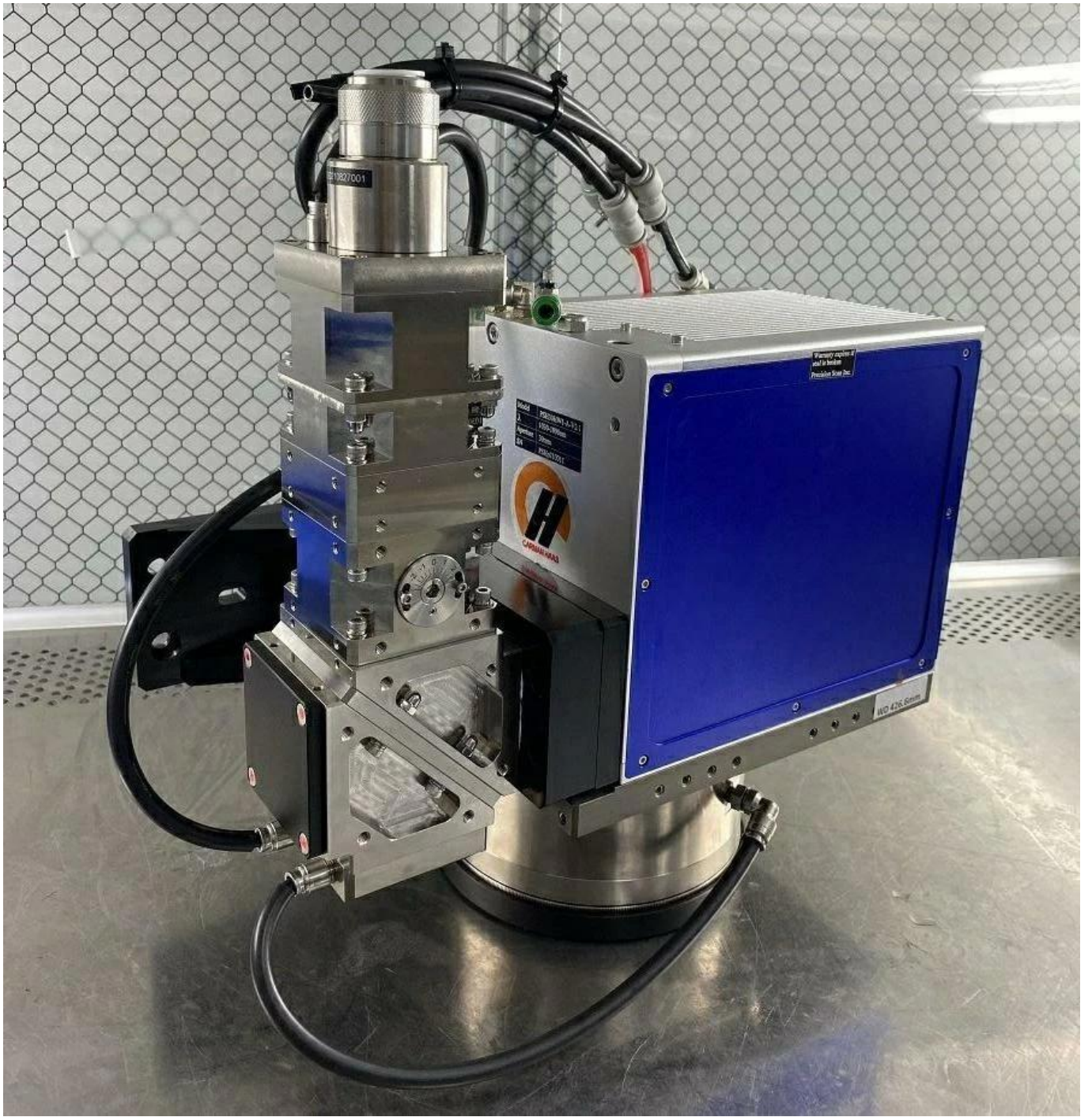
4. 鏡頭的焦距 (f) (mm);
5. 半徑-θ 鏡頭的焦距 FL (mm);
6. Coaxial 鏡頭的直徑, 和 鏡頭的長度;
7. 鏡頭的直徑公差:  $\pm 3$  μm 鏡頭的直徑公差 0.01 mm;
8. 鏡頭的 QBH;
9. 鏡頭的直徑公差: 鏡頭的直徑公差 0.5%, 鏡頭的直徑公差 100 μm;
10. 鏡頭 (mm);
11. 鏡頭的直徑 (mm);
12. focus 鏡頭 (mm);
13. 鏡頭的直徑 (mm);
14. 鏡頭的直徑 xy2-100;
15. 鏡頭的直徑: 18 mm

[https://www.psi.com/Products/Industrial-Optics/Industrial-Optics-Products](#)









## 1030-1090nm F-Theta Lenses

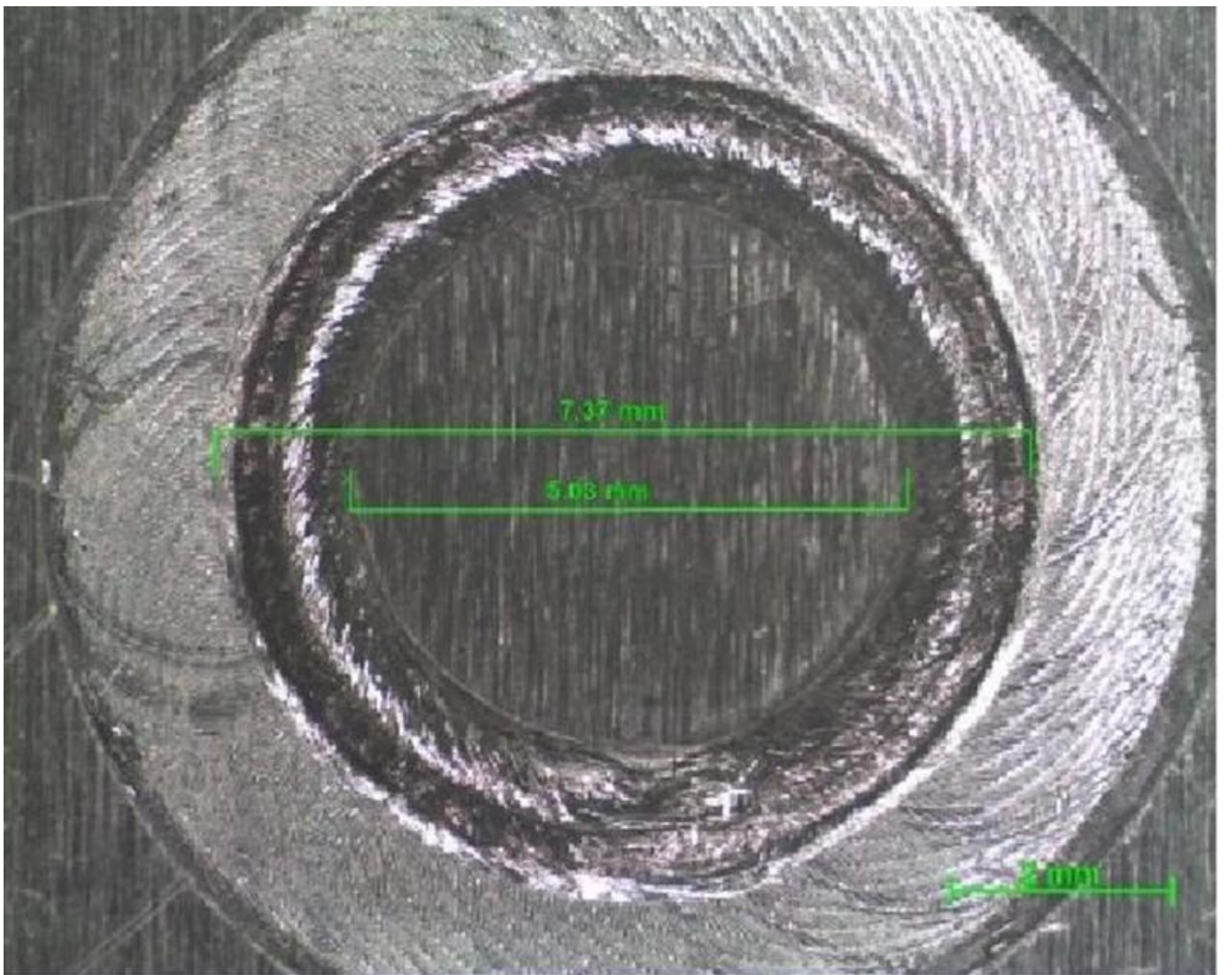
Part Description	Focal Length (mm)	Scan Field (mm)	Max Entrance Pupil (mm)	Working Distance(mm)	Mounting Thread
SL-(1030-1090)-100-254-(30CA)-M102*1-WC	254	100x100	30	333	M102x1/M85x1
SL-(1030-1090)-180-348-(30CA)-M102*1-WC	348	180x180	30	438	M102x1
SL-(1030-1090)-180-400-(30CA)-M102*1-WC	400	180x180	30	501	M102x1
SL-(1030-1090)-250-500-(30CA)-M112*1-WC	500	250x250	30	607	M112x1/M100x1

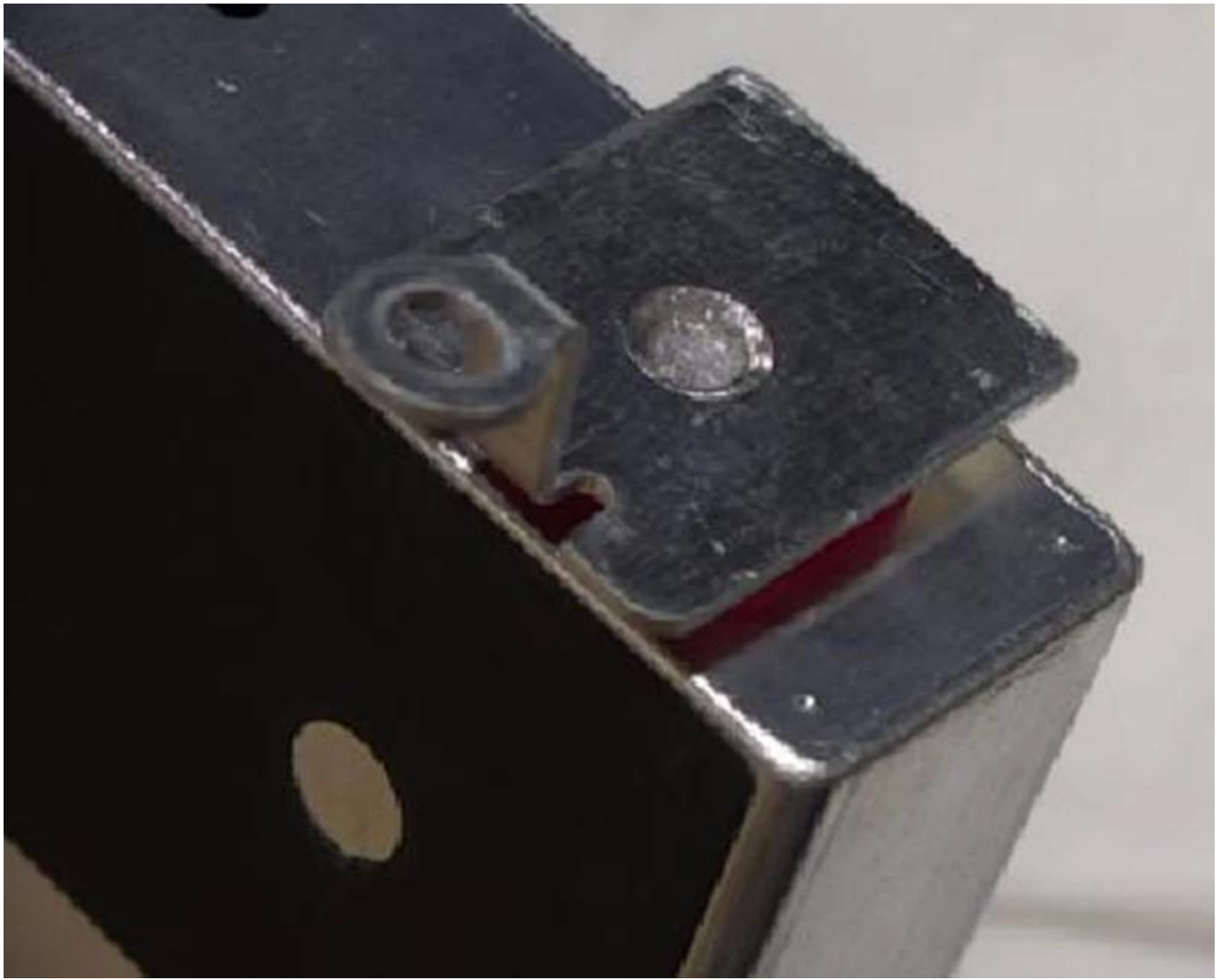
## QBH Collimation Module

Part Description	Focal Length (mm)	Clear Aperture (mm)	Max NA	Coating
CL2-(900-1100)-30-F60-QBH-A-WC	60	28	0.22	AR/AR@1030-1090nm
CL2-(900-1100)-30-F100-QBH-A-WC	100	28	0.13	AR/AR@1030-1090nm
CL2-(900-1100)-30-F125-QBH-A-WC	125	28	0.10	AR/AR@1030-1090nm
CL2-(900-1100)-38-F100-QBH-A-WC	100	34	0.16	AR/AR@1030-1090nm
CL2-(900-1100)-38-F125-QBH-A-WC	125	34	0.13	AR/AR@1030-1090nm
CL2-(900-1100)-38-F135-QBH-A-WC	135	34	0.12	AR/AR@1030-1090nm
CL2-(900-1100)-38-F150-QBH-A-WC	150	34	0.11	AR/AR@1030-1090nm
CL2-(900-1100)-38-F200-QBH-A-WC	200	34	0.08	AR/AR@1030-1090nm



















重要仪器,  
非专业人士勿动。

OptiCentric 300

TRIOPTICS







PerkinElmer Lambda 950---Testing Transmission and Reflectivity



□□□□□□□□ □□ □□□□□□□□





# CERTIFICATE

## ATTESTATION CERTIFICATE OF MACHINERY AND LOW VOLTAGE DIRECTIVES

Technical file of the company mentioned below has been observed and audit has been completed successfully. 2006/42/EC Machinery Directive and 2014/ 35/EU Low Voltage Directive have been taken as references for these processes

Company Name : **Camman HAAS Laser Technology (Suzhou) Co., Ltd.**

Company Address : No 155, West Road Suhong, Suzhou Industrial Park, Suzhou City, Jiangsu , P.R.China

Related Directives and Annex : **Low Voltage Directive 2014/35/EU  
Machinery Directive 2006/42/EC**

Related Standards : **EN ISO 12100:2010; EN 60204-1:2006+A1:2009+AC:2010**

Product Name : **Laser Marking Machine**

Report No and Date : SD-90049717.09.08.2018

Product Brand/Model/Type : LMCH-3W,LMCH-5W,LMCH-10W,LMCH-15W,LMCH-20W,LMCH-25W,  
LMCH-30W,LMCH-50W,LMCH-60W,LMCH-70W,LMCH-100W,  
LMCH-120W,LMCH-150W,LMCH-200W,LMCH-300W,LMCH-500W

Certificate Number : **M.2018.201.N6073**

Initial Assessment Date : 10.08.2018

Registration Date : 13.08.2018

Reissue Date/No :

Expiry Date : **12.08.2023**

*Signature*  
UDEM International Certification  
Auditing Training Centre Industry  
and Trade Inc. Co.

The validity of the certificate can be checked through [www.udem.com.tr](http://www.udem.com.tr). The CE mark shown on the right can only be used under the responsibility of the manufacturer with the completion of EC Declaration of Conformity for all the relevant Directives. This certificate remains the property of UDEM International Certification Auditing Training Centre Industry and Trade Inc. Co. to whom it must be returned upon request. The above-mentioned firm must keep a copy of this certificate for 15 years from the registration of certificate. This certificate only covers the product(s) stated above and UDEM must be notified in case of any changes on the product(s).  
Address: Mithakere Mahallesi 2073 Sokak (Baki 93 Sokak) No:10 Çankaya - Ankara - TÜRKİYE  
Phone: +90 0312 443 03 90 Fax: +90 0312 443 03 76  
E-mail: [info@udemtd.com.tr](mailto:info@udemtd.com.tr) [www.udem.com.tr](http://www.udem.com.tr)



## Certificate of Approval

Certificate No.: 10119Q12565ROM

Awarded to

**Carman Haas Laser Technology(SuZhou)  
Co., Ltd.**

Organization Code Certificate No. / Unified Social Credit Code:91320594MA1MF4EP56  
Add.:No.155, West Road Suhong, Suzhou Industrial Park, Suzhou City, Jiangsu Province, P.R. China. 215000

Beijing ZhongLianTianRun Certification Center (ZLTR) certify that the  
Quality Management System of the above organization has been assessed and found to be  
in accordance with the requirements of the standard:  
**GB/T19001-2016 / ISO9001:2015**

### SCOPE OF CERTIFICATION/REGISTRATION

The Research and Development and Production of Optics Lenses (Except the limits of national laws and regulations.)

This certificate is made valid when used with certification scopes and the requirements of applicable laws and regulations. These requirements include, but are not limited to, administrative permits, scopes of qualifications, and CCC requirements.

Subject to operation conditions in requirements conformity with Quality Management System.

This Certificate is valid for a period of three years only.

**Date from: Mar 13th,2019 To: Mar 12th,2022**

The effectiveness of this Certificate shall be Validated by periodic surveillance audit of ZLTR for maintenance.

Information of this certificate can be found on the official website of Beijing Zhonglian Tianrun Certification center (<http://www.zltr.com.cn>)



Beijing ZhongLiantianrun Certification Center

Room2003, 22nd Floor, 2nd Unit, Block 1, No.4 Yard, Qiyang Road, Chaoyang District, Beijing, P.R. China 100022

Information of the center can be found on the official website of Certification and Accreditation Administration of the People's Republic of China (<http://www.cnca.gov.cn>)

ISO 9001

ISO 9001





□□□□□□□□





□□□□ □□□□:

Q1: 請說明以下各項的定義：

1) 請說明「品牌」與「商標」的區別。

2) 請說明「商標」與「註冊商標」的區別。

3) 請說明「商標」與「專利」的區別。

4) 請說明「商標」與「專利」的區別。

Q2:

(1) 請說明「商標」與「商標」的區別。

(2) 請說明「商標」與「商標」的區別。

Q3: 請說明「商標」與「商標」的區別。

Q4: 請說明「商標」與「商標」的區別。

1: 請說明「商標」與「商標」的區別。

2: 請說明「商標」與「商標」的區別。

2: 請說明「商標」與「商標」的區別。

3: 請說明「商標」與「商標」的區別。

3: 請說明「商標」與「商標」的區別。

4: 請說明「商標」與「商標」的區別。

4: 請說明「商標」與「商標」的區別。

Q5: 請說明「商標」與「商標」的區別。

5: 請說明「商標」與「商標」的區別。

6: 請說明「商標」與「商標」的區別。

6: 請說明「商標」與「商標」的區別。

7: 請說明「商標」與「商標」的區別。

7: 請說明「商標」與「商標」的區別。

Q8: 請說明「商標」與「商標」的區別。



□ 8: □□ □□□□□□ □□□□ □□ □□□□ □□□□ □□ □□ MOQ □□ □□ □□ / □□ □□□□□□ □□□□□□ □□ □□□□ □□□□