

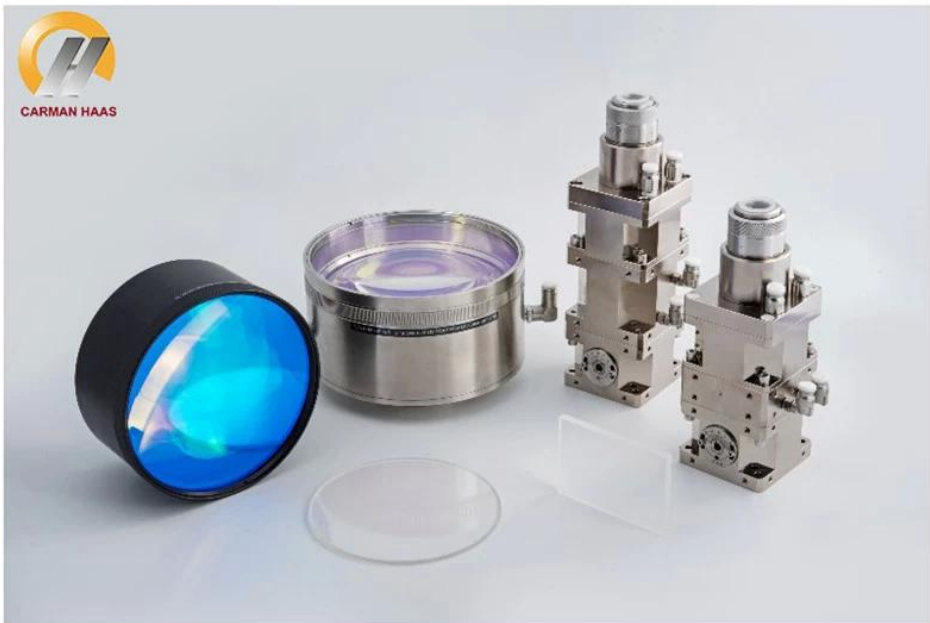
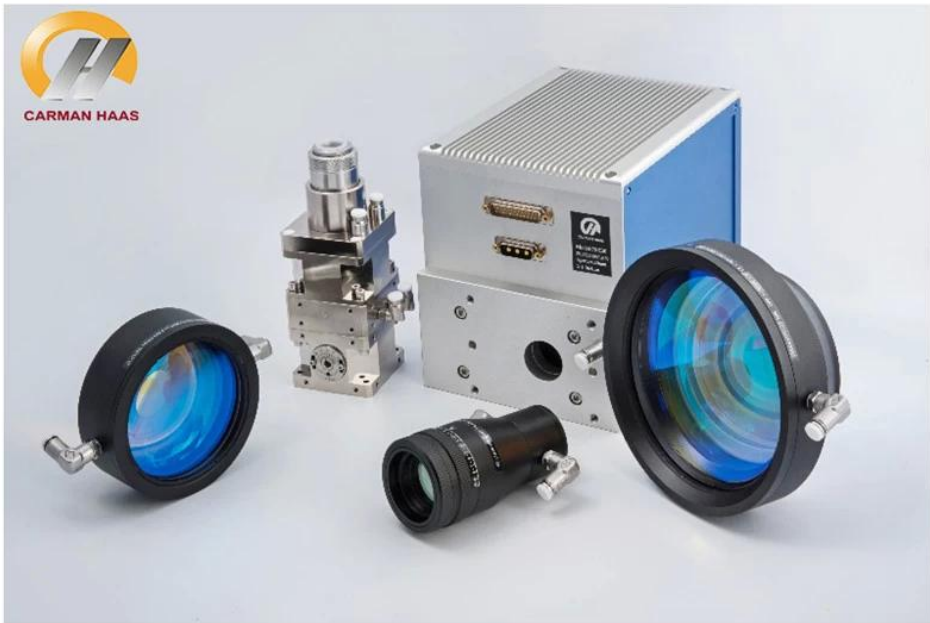
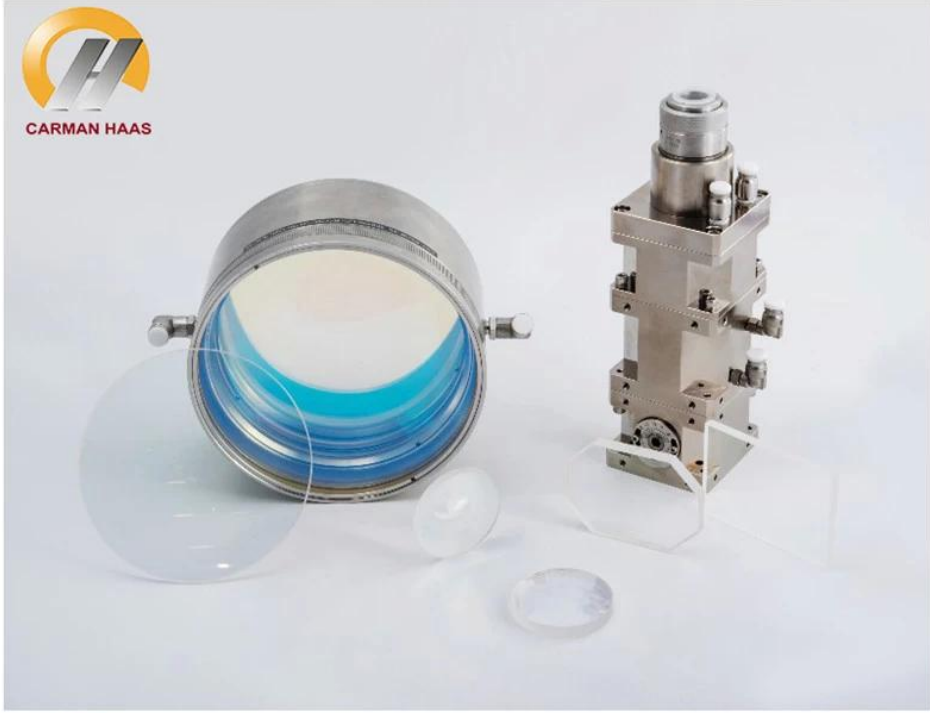
XXXXXXXX XXXX-XXXXXXXX-XXXXXXXX-XXXXXXXX-XXXX-XXXXXXXX-XXXX-XXXX-XX, XXXXXX XXXXX XXXX
XXXXXXXXXXXXXXXX XX XXX XXXXXXX XXXX XXXXXXXXXXX XXXXXXX XX XXXXX XXXXX XXXXXXX XXXXXXX XX XXX XXXXXXXXXXXXXXX
XXXXXXXXXX XX XX XXXXX-XXXX-XXXX XXXXXXXXXXXXXXXXXXXX XX XXXXXXX XXXXXXX XXX XXXXXXXXXXXXXXXXXXXX XXXXXXXXXXX XXXXXXX
XXXXXXXXXXXXXXXXX, XXXXXXX XXXX XX XXXXXXX XXX: QBH Collimation XXXXXXXXXXXX / XXX XXXXXXXXXXX, XXXXXXXXXXXXXXXXXXX XXXXXXX,
XX-XXXX XXXXXXX XXXX, XXXXXXX XXXXXXXXXXX XXXXXXXXXXX XXXXXXXXXXX / XXX XXXXXXXXXXX XXXXXXX XXXXX XX XXXXX XX XXXXXXX
XXXXXXXX XX (XXXXXXXX XX XXXXX XXXXXXX XX XXXX-XXXX XXXXXXX XX XXXXX XX), XXXXXXXXXXXXXXXXXXX XXXXXXX XXX XX XXXXXXX XXXXX
XXXX

XXXX:

- (1) XXXXXXXXXXX XXXXXXXXXXX XXXXXXX XX;
 - (2) XXXX XXXXX XXXXXXXXXXXXXXX XXXXXXX (XXXXXX XXXXX: 40 XX / XXXXX 2, 10 XXXX);
- XXXXXXXX XXXXXXX <20 ppm. Ensure that the scan lens can be saturated at 8KW;
- (3) XXXXXXXXXXX XXXXXXX XXXXXXX, Colimation XXXXXXXXXXX XXXXXXXXXXX < $\lambda/10$, ensuring diffraction limit;
 - (4) XXXXX XXXXXXX XX XXXXXXX XXXXXXX XX XXX XXXXXXXXXXX, 1 XXXXXXX, XXXXXXX XX XXXX XXX XXXX XXXX XXXX XX
XXXX XXXXXXXXXXXXXXX XXXX <50°C when using 6KW;
 - (5) XX XXX XXXXXXX XXXXXXX XX XXX, XXXXX XXXXX XX <0.5mm at 80 °C;
 - (6) XXXXXXXXXXXXXXX XX XXXX XXXXXXX, XXXXXXXXXXX XX XXXXXXXXXXX XXXXX XX XXXXX XXX

XXXXXXXX XXXXX-XXXXXXXX-XXXXXXXXXXXX-XXXX XXXXX XXXXXXX XX XXXX





□□□□□□ □□□□□□:

Extreme cutting: Telecentric F-Theta Lenses

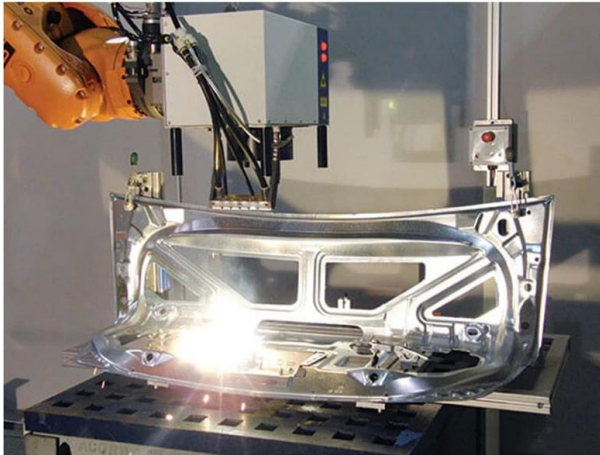
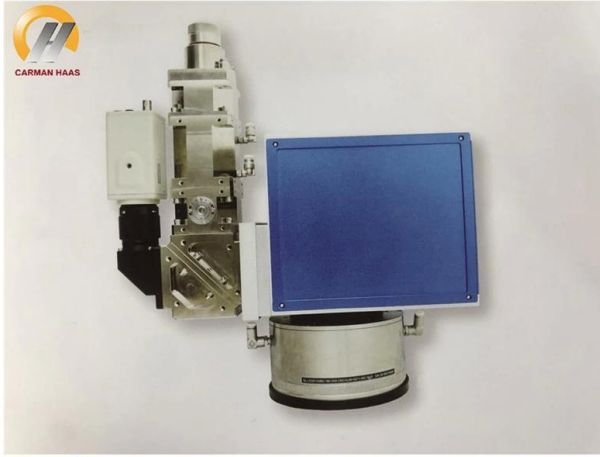
Part Description	Focal Length (mm)	Scan Field (mm)	Entrance Pupil (mm)	Working Distance(mm)	Mounting Thread
TSL-(1030-1090)-52-120-(14CA)	120	52x52	14	149	M85x1
TSL-(1030-1090)-60-120-(15CA)	120	60x60	15	162	M85x1
TSL-(1030-1090)-52-160-(14CA)	160	52x52	14	186	M79x1
TSL-(1030-1090)-75-160-(14CA)	160	75x75	14	186	M85x1

Extreme cutting: Beam Expander

Part Description	Expansion Ratio	Input CA (mm)	Output CA (mm)	Housing Diameter (mm)	Housing Length (mm)	Mounting Thread
BE-(1030-1090)-D26:45-1.5X-A	1.5X	18	26	44	45	M30x1 & M43x0.5
BE-(1030-1090)-D25:85.2-1.5X-Z13X	1X-3X	14	23	47	85.2	1-32UNF & M43x0.5

1030-1090nm F-Theta Lenses

Part Description	Focal Length (mm)	Scan Field (mm)	Entrance Pupil (mm)	Working Distance(mm)	Mounting Thread
SL-(1030-1090)-100-170-(14CA)	170	100x100	14	215	M79x1/M102x1
SL-(1030-1090)-150-210-(15CA)	210	150x150	15	269	M79x1/M102x1
SL-(1030-1090)-175-254-(15CA)	254	175x175	15	317	M79x1/M102x1
SL-(1030-1090)-90-175-(20CA)	175	90x90	20	233	M85x1
SL-(1030-1090)-160-260-(20CA)	260	160x160	20	333	M85x1
SL-(1030-1090)-100-254-(30CA)-M102*1-WC	254	100x100	30	333	M102x1/M85x1
SL-(1030-1090)-180-348-(30CA)-M102*1-WC	348	180x180	30	438	M102x1
SL-(1030-1090)-180-400-(30CA)-M102*1-WC	400	180x180	30	501	M102x1
SL-(1030-1090)-250-500-(30CA)-M112*1-WC	500	250x250	30	607	M112x1/M100x1



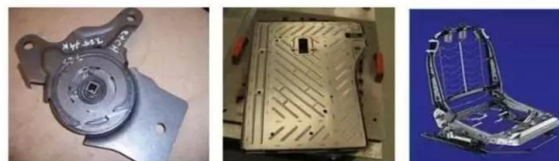
白车身 Body-in-White



Sun gear, Ring gear Viscous damper Synchronization ring



Differential gear Planetary carrier Flywheel



Recliner Backrest Seat Frame



Seat Track Assembly







重要仪器,
非专业人士勿动。

OptiCentric 300

TRIOPTICS





PerkinElmer Lambda 950---Testing Transmission and Reflectivity



□□□□□□□□ □□ □□□□□□□□





C E R T I F I C A T E

ATTESTATION CERTIFICATE OF MACHINERY AND LOW VOLTAGE DIRECTIVES

Technical file of the company mentioned below has been observed and audit has been completed successfully. 2006/42/EC Machinery Directive and 2014/ 35/EU Low Voltage Directive have been taken as references for these processes

Company Name : **Camman HAAS Laser Technology (Suzhou) Co., Ltd.**

Company Address : No 155, West Road Suhong, Suzhou Industrial Park, Suzhou City, Jiangsu , P.R.China

Related Directives and Annex : **Low Voltage Directive 2014/35/EU
Machinery Directive 2006/42/EC**

Related Standards : **EN ISO 12100:2010; EN 60204-1:2006+A1:2009+AC:2010**

Product Name : **Laser Marking Machine**

Report No and Date : SD-90049717.09.08.2018

Product Brand/Model/Type : LMCH-3W,LMCH-5W,LMCH-10W,LMCH-15W,LMCH-20W,LMCH-25W,
LMCH-30W,LMCH-50W,LMCH-60W,LMCH-70W,LMCH-100W,
LMCH-120W,LMCH-150W,LMCH-200W,LMCH-300W,LMCH-500W

Certificate Number : **M.2018.201.N6073**

Initial Assessment Date : 10.08.2018

Registration Date : 13.08.2018

Reissue Date/No :

Expiry Date : **12.08.2023**

Signature
UDEM International Certification
Auditing Training Centre Industry
and Trade Inc. Co.



The validity of the certificate can be checked through www.udem.com.tr. The CE mark shown on the right can only be used under the responsibility of the manufacturer with the completion of EC Declaration of Conformity for all the relevant Directives. This certificate remains the property of UDEM International Certification Auditing Training Centre Industry and Trade Inc. Co. to whom it must be returned upon request. The above-mentioned firm must keep a copy of this certificate for 15 years from the registration of certificate. This certificate only covers the product(s) stated above and UDEM must be notified in case of any changes on the product(s).
Address: Mithakere Mahalleli 2073 Sokak (Eski 93 Sokak) No:10 Çankaya - Ankara - TÜRKİYE
Phone: +90 0312 443 03 90 Fax: +90 0312 443 03 76
E-mail: info@udemtd.com.tr www.udem.com.tr



Certificate of Approval

Certificate No.: 10119Q12565R0M

Awarded to

**Carman Haas Laser Technology(SuZhou)
Co., Ltd.**

Organization Code Certificate No. / Unified Social Credit Code:91320594MA1MF4EP56
Add.:No.155, West Road Suhong, Suzhou Industrial Park, Suzhou City, Jiangsu Province, P.R. China. 215000

Beijing ZhongLianTianRun Certification Center (ZLTR) certify that the
Quality Management System of the above organization has been assessed and found to be
in accordance with the requirements of the standard:
GB/T19001-2016 / ISO9001:2015

SCOPE OF CERTIFICATION/REGISTRATION

The Research and Development and Production of Optics Lenses (Except the limits of national laws and regulations.)

This certificate is made valid when used with certification scopes and the requirements of applicable laws and regulations. These requirements include, but are not limited to, administrative permits, scopes of qualifications, and CCC requirements.

Subject to operation conditions in requirements conformity with Quality Management System.

This Certificate is valid for a period of three years only.

Date from: Mar 13th,2019 To: Mar 12th,2022

The effectiveness of this Certificate shall be Validated by periodic surveillance audit of ZLTR for maintenance.

Information of this certificate can be found on the official website of Beijing Zhonglian Tianrun Certification center (<http://www.zltr.com.cn>)

ISO 9001

ISO 9001



Beijing ZhongLiantianrun Certification Center

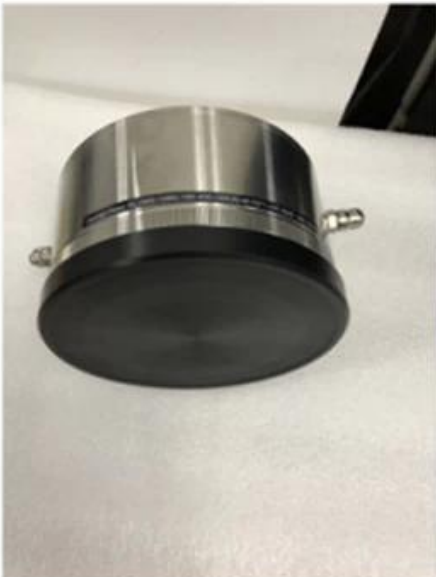
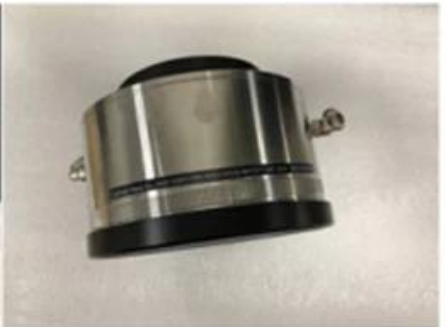
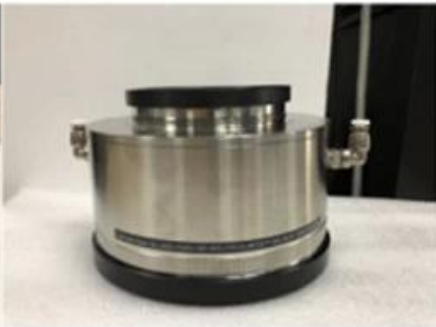
Room2003, 22nd Floor, 2nd Unit, Block 1, No.4 Yard, Qiyang Road, Chaoyang District, Beijing, P.R. China 100022

Information of the certificate can be found on the official website of Certification and Accreditation Administration of the People's Republic of China (<http://www.cnca.gov.cn>)



□□□□□□□□

Packaging & Shipping





Q1: 請說明以下各項的定義：

1) 請說明什麼是「品牌」？

2) 請說明什麼是「品牌策略」？

3) 請說明什麼是「品牌定位」？

4) 請說明什麼是「品牌識別」？

Q2:

(1) 請說明品牌識別系統包含哪些元素？

(2) 請說明品牌識別系統與品牌策略之間的關係。

品牌識別系統

Q3: 1. 品牌識別與品牌策略有何關係？

1: 品牌識別是品牌策略的具體表現，品牌策略是品牌識別的指導方針。

Q3: 2. 品牌識別與品牌策略有何關係？

2: 品牌策略是品牌識別的指導方針，品牌識別是品牌策略的具體表現。

Q3: 3. 品牌識別與品牌策略有何關係？

3: 品牌策略是品牌識別的指導方針，品牌識別是品牌策略的具體表現。

Q3: 4. 品牌識別與品牌策略有何關係？

4: 品牌策略是品牌識別的指導方針，品牌識別是品牌策略的具體表現。

Q5: May 品牌識別與品牌策略有何關係？

5: 品牌策略是品牌識別的指導方針，品牌識別是品牌策略的具體表現。

Q6: 品牌識別與品牌策略有何關係？

6: 品牌策略是品牌識別的指導方針，品牌識別是品牌策略的具體表現。

Q7: 品牌 **OEM** 與品牌策略有何關係？

7: 品牌策略是品牌識別的指導方針，品牌識別是品牌策略的具體表現。

Q8: 品牌識別與品牌策略有何關係？

□ 8: □□ □□□□□□ □□□□ □□ □□ □□□□ □□□□ □□□□ □□ □□ MOQ □□ □□□ □□ / □□ □□□□□□ □□□□□□ □□ □□□□ □□□□