

2, 3, 4, 5, 6, 7, 8, 9, 10, 11, 12, 13, 14, 15, 16, 17, 18, 19, 20, 21, 22, 23, 24, 25, 26, 27, 28, 29, 30, 31, 32, 33, 34, 35, 36, 37, 38, 39, 40, 41, 42, 43, 44, 45, 46, 47, 48, 49, 50, 51, 52, 53, 54, 55, 56, 57, 58, 59, 60, 61, 62, 63, 64, 65, 66, 67, 68, 69, 70, 71, 72, 73, 74, 75, 76, 77, 78, 79, 80, 81, 82, 83, 84, 85, 86, 87, 88, 89, 90, 91, 92, 93, 94, 95, 96, 97, 98, 99, 100

2, 3, 4, 5, 6, 7, 8, 9, 10, 11, 12, 13, 14, 15, 16, 17, 18, 19, 20, 21, 22, 23, 24, 25, 26, 27, 28, 29, 30, 31, 32, 33, 34, 35, 36, 37, 38, 39, 40, 41, 42, 43, 44, 45, 46, 47, 48, 49, 50, 51, 52, 53, 54, 55, 56, 57, 58, 59, 60, 61, 62, 63, 64, 65, 66, 67, 68, 69, 70, 71, 72, 73, 74, 75, 76, 77, 78, 79, 80, 81, 82, 83, 84, 85, 86, 87, 88, 89, 90, 91, 92, 93, 94, 95, 96, 97, 98, 99, 100

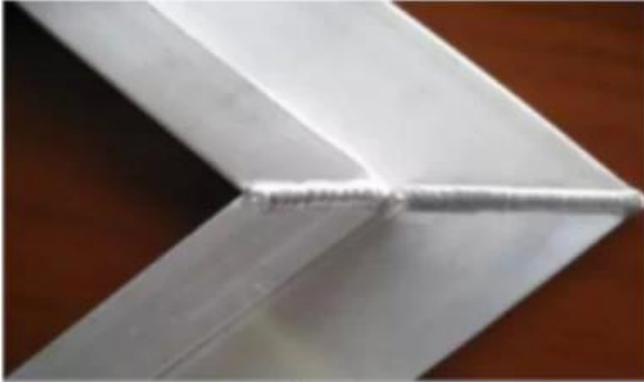
3, 4, 5, 6, 7, 8, 9, 10, 11, 12, 13, 14, 15, 16, 17, 18, 19, 20, 21, 22, 23, 24, 25, 26, 27, 28, 29, 30, 31, 32, 33, 34, 35, 36, 37, 38, 39, 40, 41, 42, 43, 44, 45, 46, 47, 48, 49, 50, 51, 52, 53, 54, 55, 56, 57, 58, 59, 60, 61, 62, 63, 64, 65, 66, 67, 68, 69, 70, 71, 72, 73, 74, 75, 76, 77, 78, 79, 80, 81, 82, 83, 84, 85, 86, 87, 88, 89, 90, 91, 92, 93, 94, 95, 96, 97, 98, 99, 100

3, 4, 5, 6, 7, 8, 9, 10, 11, 12, 13, 14, 15, 16, 17, 18, 19, 20, 21, 22, 23, 24, 25, 26, 27, 28, 29, 30, 31, 32, 33, 34, 35, 36, 37, 38, 39, 40, 41, 42, 43, 44, 45, 46, 47, 48, 49, 50, 51, 52, 53, 54, 55, 56, 57, 58, 59, 60, 61, 62, 63, 64, 65, 66, 67, 68, 69, 70, 71, 72, 73, 74, 75, 76, 77, 78, 79, 80, 81, 82, 83, 84, 85, 86, 87, 88, 89, 90, 91, 92, 93, 94, 95, 96, 97, 98, 99, 100

4, 5, 6, 7, 8, 9, 10, 11, 12, 13, 14, 15, 16, 17, 18, 19, 20, 21, 22, 23, 24, 25, 26, 27, 28, 29, 30, 31, 32, 33, 34, 35, 36, 37, 38, 39, 40, 41, 42, 43, 44, 45, 46, 47, 48, 49, 50, 51, 52, 53, 54, 55, 56, 57, 58, 59, 60, 61, 62, 63, 64, 65, 66, 67, 68, 69, 70, 71, 72, 73, 74, 75, 76, 77, 78, 79, 80, 81, 82, 83, 84, 85, 86, 87, 88, 89, 90, 91, 92, 93, 94, 95, 96, 97, 98, 99, 100

4, 5, 6, 7, 8, 9, 10, 11, 12, 13, 14, 15, 16, 17, 18, 19, 20, 21, 22, 23, 24, 25, 26, 27, 28, 29, 30, 31, 32, 33, 34, 35, 36, 37, 38, 39, 40, 41, 42, 43, 44, 45, 46, 47, 48, 49, 50, 51, 52, 53, 54, 55, 56, 57, 58, 59, 60, 61, 62, 63, 64, 65, 66, 67, 68, 69, 70, 71, 72, 73, 74, 75, 76, 77, 78, 79, 80, 81, 82, 83, 84, 85, 86, 87, 88, 89, 90, 91, 92, 93, 94, 95, 96, 97, 98, 99, 100

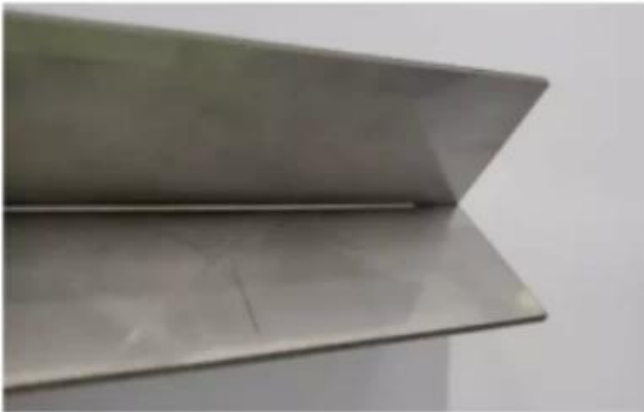
5, 6, 7, 8, 9, 10, 11, 12, 13, 14, 15, 16, 17, 18, 19, 20, 21, 22, 23, 24, 25, 26, 27, 28, 29, 30, 31, 32, 33, 34, 35, 36, 37, 38, 39, 40, 41, 42, 43, 44, 45, 46, 47, 48, 49, 50, 51, 52, 53, 54, 55, 56, 57, 58, 59, 60, 61, 62, 63, 64, 65, 66, 67, 68, 69, 70, 71, 72, 73, 74, 75, 76, 77, 78, 79, 80, 81, 82, 83, 84, 85, 86, 87, 88, 89, 90, 91, 92, 93, 94, 95, 96, 97, 98, 99, 100



Solderless



360 degree no dead seam weld



No deformation



Perfect weld

[3D-Modellierung-Techniken](#)

3D-Modellierung:

3D-Modellierung ist ein Prozess, bei dem ein dreidimensionales digitales Modell eines Objekts erstellt wird. Es wird in der Architektur, im Maschinenbau, in der Automobilindustrie und in der Entertainment-Branche eingesetzt. Die Modelle können für die Visualisierung, die Simulation und die Herstellung von physischen Modellen verwendet werden.

3D-Modellierung:

3D-Modellierung ist ein Prozess, bei dem ein dreidimensionales digitales Modell eines Objekts erstellt wird. Es wird in der Architektur, im Maschinenbau, in der Automobilindustrie und in der Entertainment-Branche eingesetzt. Die Modelle können für die Visualisierung, die Simulation und die Herstellung von physischen Modellen verwendet werden.

本產品為 2000W 功率之雷射切管機，適用於切割各種金屬材料，如：不銹鋼、鋁、銅、鐵、鋼等。其切割速度極快，且切割面平整，無毛刺，是工業生產中不可或缺之設備。本產品之特點如下：(1) 切割精度高，切割面平整，無毛刺。(2) 切割速度極快，效率高。(3) 切割面光滑，無毛刺，可直接使用。 (4) 切割厚度大，可切割 2000W / 4000W 之材料。

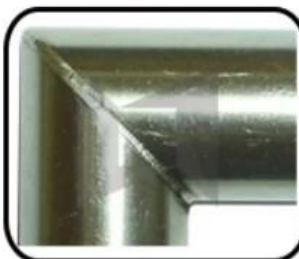
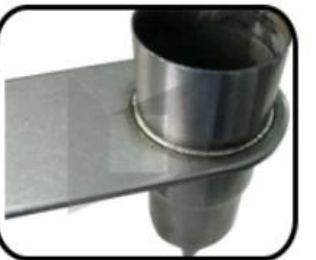
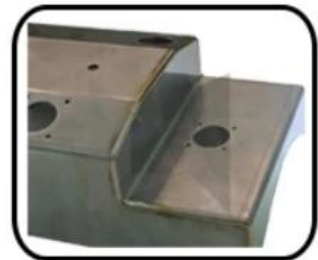
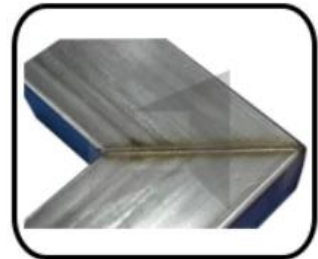
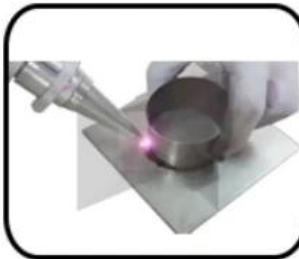
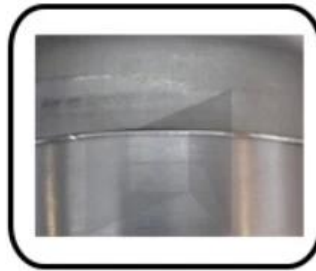
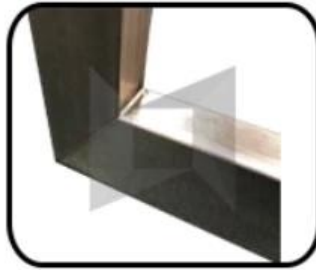
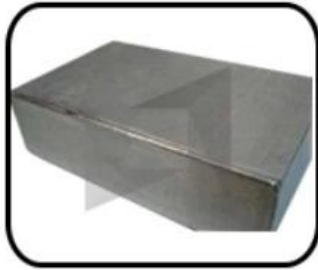
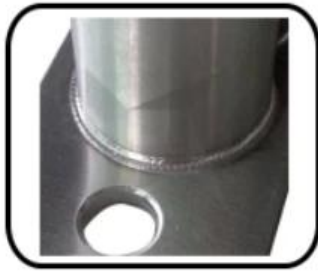
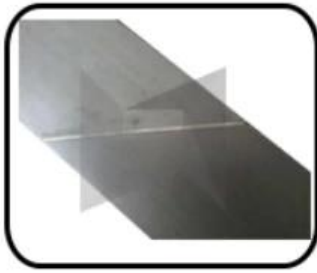


產品型號：CHLW-1000W / 1500W / 2000W

產品型號:	CHLW-1000W / 1500W / 2000W
最大輸出功率	1000W / 1500W / 2000W
雷射光源	RayCus (雷射管 / 雷射管保護器 等)
雷射管電壓	AC380V 50HZ
最大切割功率	≤ 5000W
雷射管切割速度	1080 ± 5 毫米/分鐘
雷射管切割精度	<2%
雷射管切割厚度	50 毫米 - 5 毫米 (視材料而定)
雷射管切割角度	5-95%
雷射管切割直徑	1.1 英寸
雷射管切割材料	不銹鋼 10-35 毫米、鋁 20% -80%
雷射管切割電壓	AC220V
雷射管切割速度	5/10/15 毫米 (視材料而定)
雷射管切割精度	±0.1 毫米
雷射管切割厚度	0.2 毫米 (視材料而定)
雷射管切割直徑	115 * 70 * 128 毫米
雷射管切割長度	218 毫米
雷射管切割材料	20-25 毫米 (視材料而定)
雷射管切割功率	2000 / 4000W

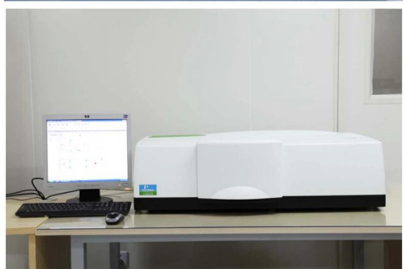
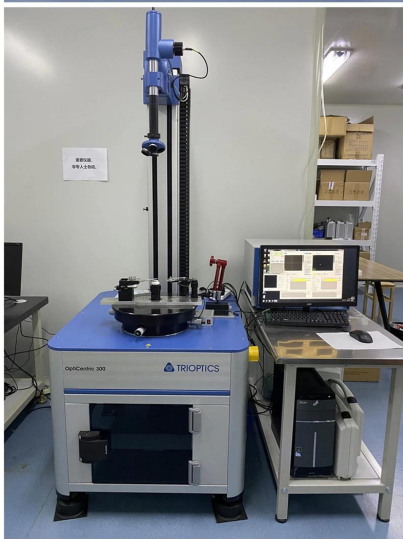


□□□□□□ □□□□ □□ □□□□□□ □□□□□:



□□□□□□





PerkinElmer Lambda 950—Testing Transmission and Reflectivity



□□□□□□□□ □□ □□□□□□□□





CERTIFICATE

ATTESTATION CERTIFICATE OF MACHINERY AND LOW VOLTAGE DIRECTIVES

Technical file of the company mentioned below has been observed and audit has been completed successfully. 2006/42/EC Machinery Directive and 2014/ 35/EU Low Voltage Directive have been taken as references for these processes

Company Name : **Camman HAAS Laser Technology (Suzhou) Co., Ltd.**

Company Address : No 155, West Road Suhong, Suzhou Industrial Park, Suzhou City, Jiangsu , P.R.China

Related Directives and Annex : **Low Voltage Directive 2014/35/EU
Machinery Directive 2006/42/EC**

Related Standards : **EN ISO 12100:2010; EN 60204-1:2006+A1:2009+AC:2010**

Product Name : **Laser Marking Machine**

Report No and Date : SD-90049717.09.08.2018

Product Brand/Model/Type : LMCH-3W,LMCH-5W,LMCH-10W,LMCH-15W,LMCH-20W,LMCH-25W,
LMCH-30W,LMCH-50W,LMCH-60W,LMCH-70W,LMCH-100W,
LMCH-120W,LMCH-150W,LMCH-200W,LMCH-300W,LMCH-500W

Certificate Number : **M.2018.201.N6073**

Initial Assessment Date : 10.08.2018

Registration Date : 13.08.2018

Reissue Date/No :

Expiry Date : **12.08.2023**

Signature
UDEM International Certification
Auditing Training Centre Industry
and Trade Inc. Co.



The validity of the certificate can be checked through www.udem.com.tr. The CE mark shown on the right can only be used under the responsibility of the manufacturer with the completion of EC Declaration of Conformity for all the relevant Directives. This certificate remains the property of UDEM International Certification Auditing Training Centre Industry and Trade Inc. Co. to whom it must be returned upon request. The above-mentioned firm must keep a copy of this certificate for 15 years from the registration of certificate. This certificate only covers the product(s) stated above and UDEM must be notified in case of any changes on the product(s).
Address: Mithakere Mahalleli 2073 Sokak (Eski 93 Sokak) No:10 Çankaya - Ankara - TÜRKİYE
Phone: +90 0312 443 03 90 Fax: +90 0312 443 03 76
E-mail: info@udemtd.com.tr www.udem.com.tr



Certificate of Approval

Certificate No.: 10119Q12565R0M

Awarded to

**Carman Haas Laser Technology(SuZhou)
Co., Ltd.**

Organization Code Certificate No. / Unified Social Credit Code:91320594MA1MF4EP56
Add.:No.155, West Road Suhong, Suzhou Industrial Park, Suzhou City, Jiangsu Province, P.R. China. 215000

Beijing ZhongLianTianRun Certification Center (ZLTR) certify that the
Quality Management System of the above organization has been assessed and found to be
in accordance with the requirements of the standard:
GB/T19001-2016 / ISO9001:2015

SCOPE OF CERTIFICATION/REGISTRATION

The Research and Development and Production of Optics Lenses (Except the limits of national laws and regulations.)

This certificate is made valid when used with certification scopes and the requirements of applicable laws and regulations. These requirements include, but are not limited to, administrative permits, scopes of qualifications, and CCC requirements.

Subject to operation conditions in requirements conformity with Quality Management System.

This Certificate is valid for a period of three years only.

Date from: Mar 13th,2019 To: Mar 12th,2022

The effectiveness of this Certificate shall be Validated by periodic surveillance audit of ZLTR for maintenance.

Information of this certificate can be found on the official website of Beijing Zhonglian Tianrun Certification center (<http://www.zltr.com.cn>)



Beijing ZhongLiantianrun Certification Center

Room2003, 22nd Floor, 2nd Unit, Block 1, No.4 Yard, Qiyang Road, Chaoyang District, Beijing, P.R. China 100022

Information of the center can be found on the official website of Certification and Accreditation Administration of the People's Republic of China (<http://www.cnca.gov.cn>)

ISO 9001

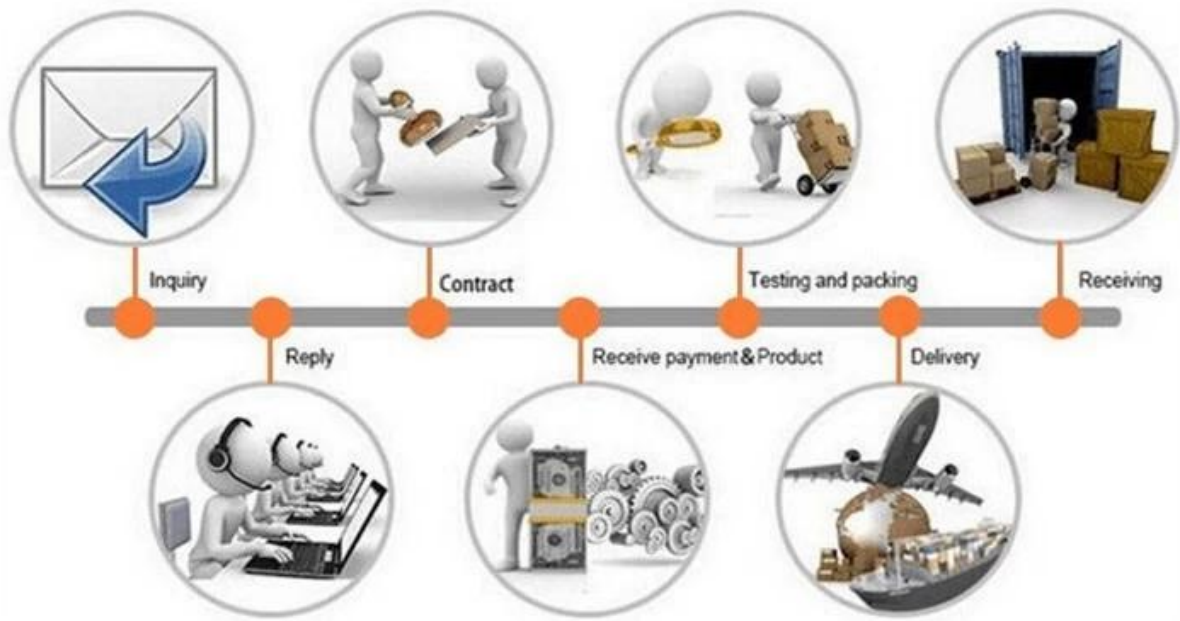
ISO 9001

□□□□□□□□□□

□□ / □□	□□□□□ □□ □□□		□□□□□□
	□□□□□□□ □□□□□□□□ □□□□	□□□□□□□	1 □□□
□□□□□ □□□□□ □□□□□			
1	□□□□□□□□□□□ □□□□		2 □□□□□□
2	□□□□		□□□
3	□□□□□□□□ □□□ □□□□		1 □□□
4	□□□□□□ □□□□□□□□□ □□□□		1 □□□
5	□□□□	30 □□□□	1 □□□□□□
6	□□□□□□□□□□ □□ □□□□□□□□□□ □□ □□□□ □□□□□□ □□□□□□□□		1 □□□□□□
7	□□□□ □□□□□□□□□□□ □□□□	1064 □□□□	1 □□□□□□

□□□□□□ □□□□□:	□□ □□□□□ □□ □□□□□ □□□ □□ □□□
□□□ □□□□□ □□ □□□□:	110x64x48cm
□□□ □□□ □□□	264 □□□□
□□□□□□□ □□ □□□:	□□□□□ □□□□□□ □□□□□□□ □□□□ □□ □□□ 2-5 □□□□□ □□□ □□□ □□□□ □□□





□□□□ □□□□:

Q1: 請說明本計畫之主要目的及預期效益。

A1: 本計畫旨在提升產品品質，並縮短生產週期，以滿足市場需求。

Q2: 計畫執行期間，可能面臨哪些風險？如何進行風險管理？

A2: 主要風險包括技術障礙、資源短缺及市場波動。我們將透過定期溝通與資源配置來降低風險。

Q3: 計畫執行進度如何？目前進度與預期進度有何差異？

A3: 目前進度已達預期進度之95%，僅剩少量細節待完善。

Q4: 計畫執行結果如何？是否達成預期目標？

A4: 計畫已圓滿達成預期目標，產品品質顯著提升，生產週期亦縮短了20%。

Q5: 計畫執行過程中，曾遇到哪些困難？如何克服？

Q6: 計畫執行結果對公司未來發展有何影響？

Q7: 計畫執行結果對客戶滿意度有何影響？

A7: 計畫執行結果顯著提升了客戶滿意度，客戶對產品品質及交貨週期均表示滿意。

Q8: 計畫執行結果對公司競爭力有何影響？

A8: 計畫執行結果顯著提升了公司競爭力，使公司在市場上更具優勢。

Q9: 計畫執行結果對公司財務狀況有何影響？

A9: 計畫執行結果對公司財務狀況產生了積極影響，提高了生產效率，降低了成本。

Q10: 計畫執行結果對公司品牌形象有何影響？

A10: 計畫執行結果顯著提升了公司品牌形象，使公司在市場上更具信譽。

Q11: 計畫執行結果對公司未來發展有何建議？

A11: 建議公司繼續加大研發投入，提升產品品質，並加強與客戶的溝通與合作。

Q12: 計畫執行結果對公司未來發展有何展望？

A12: 計畫執行結果對公司未來發展充滿信心，我們將繼續努力，為客戶提供更高品質的產品。

Q13: 計畫執行結果對公司未來發展有何挑戰？

A13: 未來發展仍面臨技術更新及市場競爭等挑戰，我們將加強研發，提升競爭力。

Q14: 計畫執行結果對公司未來發展有何機會？

□ 8: □□ □□□□□□ □□□□ □□ □□□□ □□□□ □□ □□ MOQ □□ □□ □□ / □□ □□□□□□ □□□□□□ □□ □□□□ □□□□