



Product Information

□□ □□ :

CARMANHAAS [□□ 3D □□□□ □□ □□□□ □□□□](#), □□□□ □□□ □□ □□ □□ 3D □□□□ □□ □□□□□□ □□□□ □□□□ □□ □□□□ □□ □□ □□ □□ □□ □□ □□ □□ □□. □ □□□ □□□□ □□ □□□□ □□□□. □□□□ □□ □□ □□, 3 □ □□ □□□□ □□□□□□□□. □□ □□□□ □□, □ □□□□□, □ □ □□□□ □ F-□□ □□ □□□□ □□□□.

QBH □□ □□ □□ □□□□ □□□□ □□ □□ (□□ □□ □□□□□□ □□), □□ □□□□ □ □□ □□ □□ □□ □□ □□ □□ □□ □□ □□ □□ □□ □□ □□□□.



□□□ □□ :

(1) □□ □□□ □□ 1.5 □ □□□□ □□□ □□□□ 93 % □ □□ □□ □ □□□;

(2) □□□□ □□ □□ □□□ □□□ □□ □□ □□ <20ppm□□□ □□. □ □□ □□ 2000W □□□ □□□ □□ □ 50J / cm²□□;

(3) □□ □□ □□ □□□□ □□□ □□ □□ □□ 95 % □□ □□□□;

□□ □□ □□ □□□□ (4) □□ □□ □□ □□ <0.04 M2□ □□ □□ □□□□ □□.

□□ □□ □□ [□□□□ SLS □□ □□□](#) □ □□ □



□□ □□ □□:

SLM - □□ 3D □□

Part Description	Focal Length (mm)	Scan Field (mm)	Entrance Pupil (mm)	Working Distance(mm)	Mounting Thread
SL-(1030-1090)-170-254-(20CA)-WC	254	170x170	20	290	M85x1
SL-(1030-1090)-170-254-(15CA)-M79*1	254	170x170	15	327	M79x1
SL-(1030-1090)-290-430-(15CA)	430	290x290	15	529.5	M85x1
SL-(1030-1090)-275-430-(20CA)	430	275x275	20	529.5	M85x1
SL-(1030-1090)-254-420-(20CA)	420	254x254	20	510.9	M85x1
SL-(1030-1090)-410-650-(20CA)-WC	650	410x410	20	560	M85x1
SL-(1030-1090)-440-650-(20CA)-WC	650	440x440	20	554.6	M85x1

* WC □ □ □□□□

1030-1090nm QBH □□ □ □□

Part Description	Focal Length (mm)	Clear Aperture (mm)	NA	Coating
CL2-(1030-1090)-25-F50-QBH-A-WC	50	23	0.15	AR/AR@1030-1090nm
CL2-(1030-1090)-30-F60-QBH-A-WC	60	28	0.22	AR/AR@1030-1090nm
CL2-(1030-1090)-30-F75-QBH-A-WC	75	28	0.17	AR/AR@1030-1090nm
CL2-(1030-1090)-30-F100-QBH-A-WC	100	28	0.13	AR/AR@1030-1090nm

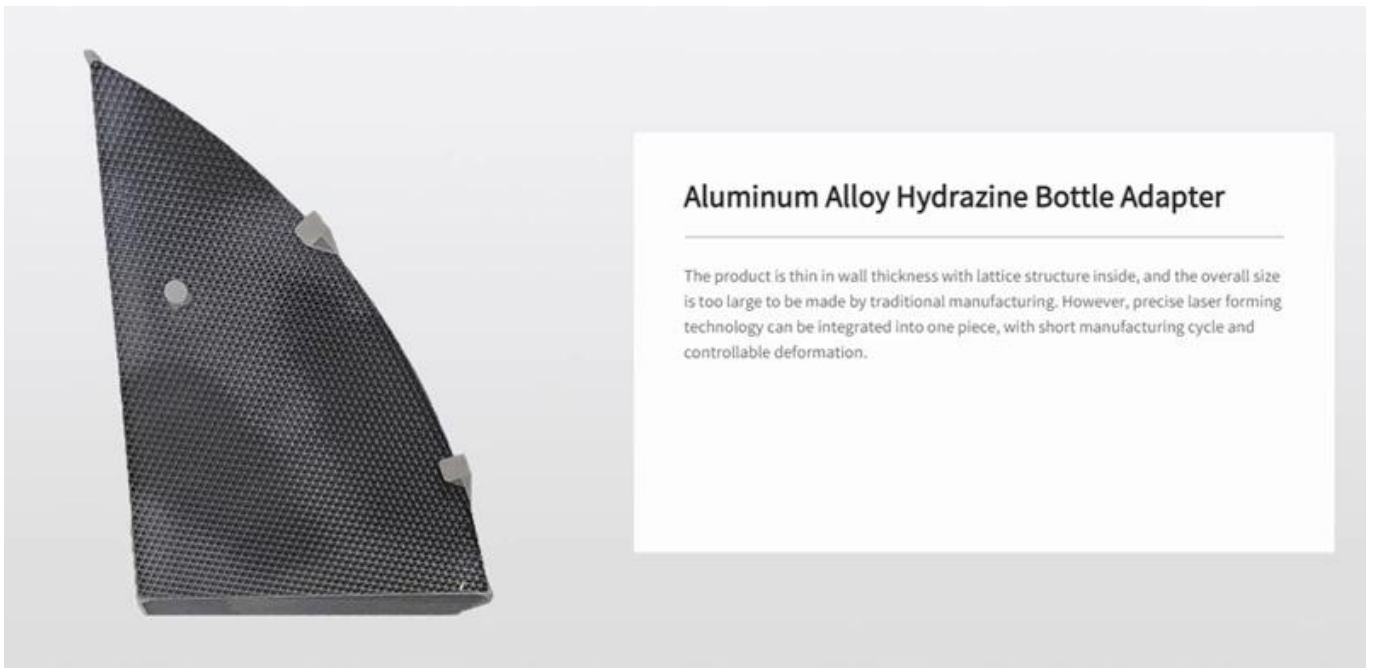
1030-1090nm □ □□□

Part Description	Expansion Ratio	Input CA (mm)	Output CA (mm)	Housing Dia(mm)	Housing Length(mm)
BE-(1030-1090)-D26:45-1.5X-A	1.5X	18	26	44	45
BE-(1030-1090)-D53:118.6-2X-A	2X	30	53	70	118.6
BE-(1030-1090)-D37:118.5-2X-A-WC	2X	18	34	59	118.5

1030-1090nm □□ □

□□ □□	□□ (mm)	□□ (mm)	□□
□□ □	98	4.	AR / AR @ 1030-1090nm
□□ □	113.	5.	AR / AR @ 1030-1090nm
□□ □	(120)	5.	AR / AR @ 1030-1090nm
□□ □	(160)	8.	AR / AR @ 1030-1090nm





Aluminum Alloy Hydrazine Bottle Adapter

The product is thin in wall thickness with lattice structure inside, and the overall size is too large to be made by traditional manufacturing. However, precise laser forming technology can be integrated into one piece, with short manufacturing cycle and controllable deformation.

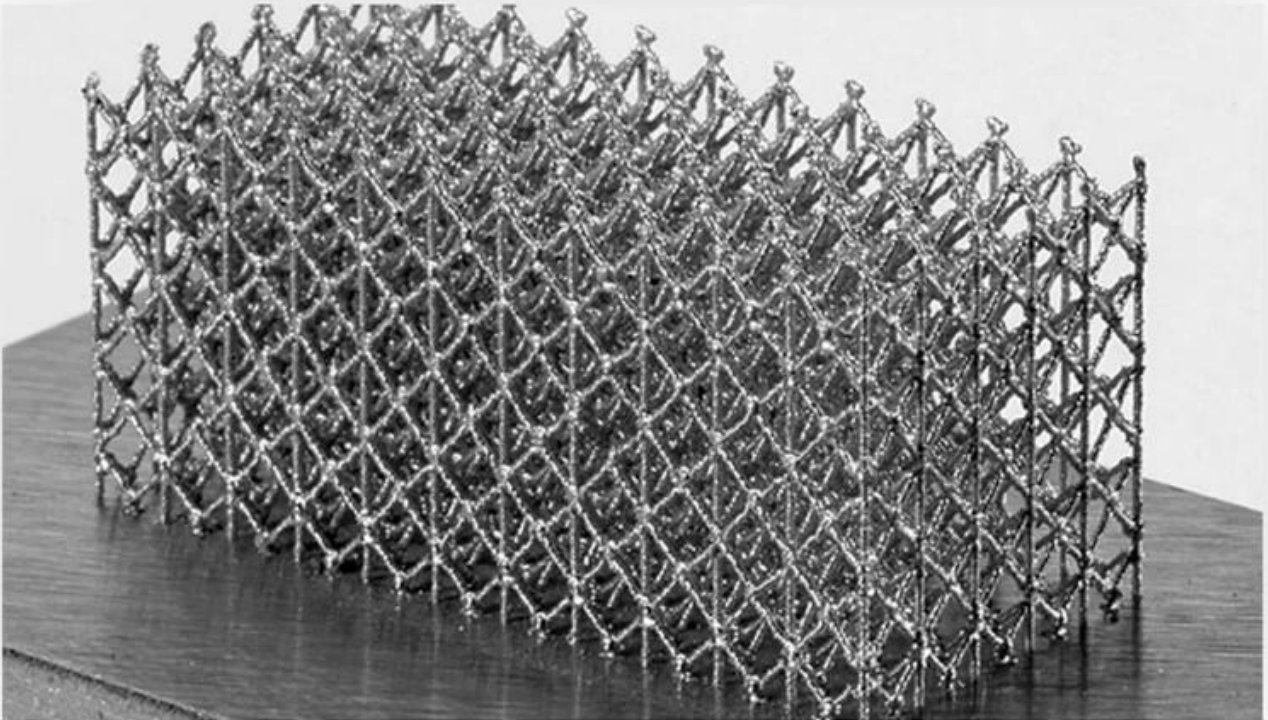


Breathable Steel Mold

The product is printed in one piece, with high precision of special-shaped structure and smooth surface roughness, which reduces the post procedures. Due to the light-weight process, the waste of material is significantly reduced compare to the traditional manufacturing.

SELECTIVE LASER MELTING (SLM)

Pros and Cons



Factory







重要仪器,
非专业人士勿动。

OptiCentric 300

TRIOPTICS





PerkinElmer Lambda 950---Testing Transmission and Reflectivity







C E R T I F I C A T E

ATTESTATION CERTIFICATE OF MACHINERY AND LOW VOLTAGE DIRECTIVES

Technical file of the company mentioned below has been observed and audit has been completed successfully. 2006/42/EC Machinery Directive and 2014/ 35/EU Low Voltage Directive have been taken as references for these processes

Company Name : **Camman HAAS Laser Technology (Suzhou) Co., Ltd.**

Company Address : No 155, West Road Suhong, Suzhou Industrial Park, Suzhou City, Jiangsu , P.R.China

Related Directives and Annex : **Low Voltage Directive 2014/35/EU
Machinery Directive 2006/42/EC**

Related Standards : **EN ISO 12100:2010; EN 60204-1:2006+A1:2009-AC:2010**

Product Name : **Laser Marking Machine**

Report No and Date : SD-90049717:09.08.2018

Product Brand/Model/Type : LMCH-3W,LMCH-5W,LMCH-10W,LMCH-15W,LMCH-20W,LMCH-25W,
LMCH-30W,LMCH-50W,LMCH-60W,LMCH-70W,LMCH-100W,
LMCH-120W,LMCH-150W,LMCH-200W,LMCH-300W,LMCH-500W

Certificate Number : **M.2018.201.N6073**

Initial Assessment Date : 10.08.2018

Registration Date : 13.08.2018

Reissue Date/No :

Expiry Date : **12.08.2023**


UDEM International Certification
Auditing Training Centre Industry
and Trade Inc. Co.

The validity of the certificate can be checked through www.udem.com.tr. The CE mark shown on the right can only be used under the responsibility of the manufacturer with the completion of EC Declaration of Conformity for all the relevant Directives. This certificate remains the property of UDEM International Certification Auditing Training Centre Industry and Trade Inc. Co. to whom it must be returned upon request. The above named firm must keep a copy of this certificate for 15 years from the registration of certificate. This certificate only covers the product(s) stated above and UDEM must be notified in case of any changes on the product(s)
Address: Muthakent Mahalleli 2073 Sokak (Eski 93 Sokak) No:10 Çankaya - Ankara - TÜRKİYE
Phone: +90 0312 443 03 90 Fax: +90 0312 443 03 70
E-mail: info@udemild.com.tr www.udem.com.tr



Certificate of Approval

Certificate No.: 10119Q12565ROM

Awarded to

**Carman Haas Laser Technology(SuZhou)
Co., Ltd.**

Organization Code Certificate No. / Unified Social Credit Code:91320594MA1MF4EP56
Add.:No.155, West Road Suhong, Suzhou Industrial Park, Suzhou City, Jiangsu Province, P.R. China. 215000

Beijing ZhongLian TianRun Certification Center (ZLTR) certify that the
Quality Management System of the above organization has been assessed and found to be
in accordance with the requirements of the standard:
GB/T19001-2016 / ISO9001:2015

SCOPE OF CERTIFICATION/REGISTRATION

The Research and Development and Production of Optics Lenses (Except the limits of national laws and regulations.)

This certificate is made valid when used with certification scopes and the requirements of applicable laws and regulations. These requirements include, but are not limited to, administrative permits, scopes of qualifications, and CCC requirements.

Subject to operation conditions in requirements conformity with Quality Management System,

This Certificate is valid for a period of three years only,

Date from: Mar 13th,2019 To: Mar 12th,2022

The effectiveness of this Certificate shall be Validated by periodic surveillance audit of ZLTR for maintenance.

Information of this certificate can be found on the official website of Beijing Zhonglian Tianrun Certification center (<http://www.zltr.com.cn>)



Beijing Zhongliantianrun Certification Center

Room2603, 22nd Floor, 2nd Unit, Block 1, No.4 Yard, Qiyang Road, Chaoyang District, Beijing, P.R. China 100102

Information of this certificate can be found on the official website of Certification and Accreditation Administration of the People's Republic of China (<http://www.cnca.gov.cn>)

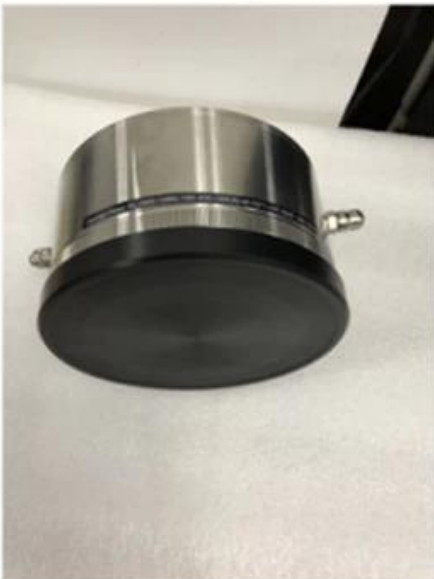
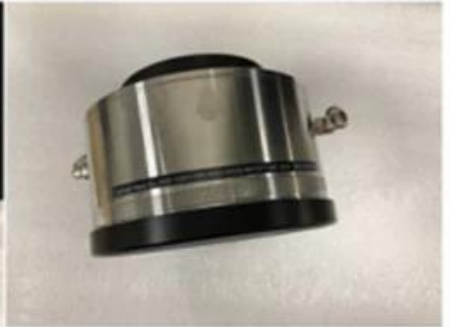
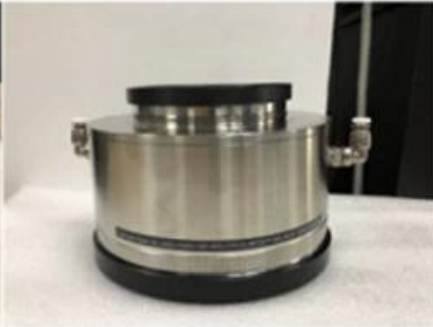
ISO 9001

ISO 9001



Packing List

Packaging & Shipping





□□□□□□.

- 1 □□)□ □ □□ □□□□ □□□□□□.
- 2 □□) □□□ □□□ □□ □□□ □ □□ □□ □□□□□□.
- 3 □□) □□□ □□□□ □□ □□□ □□□□□□.
- 4 □□) □□ □ □□ □□ □□□ □□ □□□ □□□□□□.

□□ □□:

(1) □□□ □□ □□ □□□ □□□ □□ □ □ DHL, UPS, □□□, TNT, EMS, ETS

(2)□ □□□□□□□□□□□□□□, □~□□□□□ □□~□ □□□□□□ □□□□□□□ □□□□□□□~□ □□□□□□□ □□□□□□□□□□□□□□□□□□□□ □.

 **FAQ**

Q1. □□□□□□□?

A1 : □, □□□ □□ □□□ □□ □ □□ □□□ □□ □□□□□□ □□ □ □□□□□□□.

Q2. □□□ □□□ □□□□□?

A2 : □□□ □□□□□ QC □□ □□ □□□ □□□ □□ □□ □, □□ □□ □ □□□ □□□□ □□□ □□□ □□□□□□.

Q3. □□□ □□□□□□?

A3 : □□□ □□ □□□□ □□ □□□□ □□ □□□□□ □□□ □□□□□.

Q4. □□□ □□□ □□□ □□□□□?

A4 : □□□ □□□□□ □□ □□ □□ □□□□ □□ □□□ □□ □□, □□, □□ □□ □ □□ □□□□□. □□□□□.

Q5. May MARKING □□□ □□□□□ □□ □□□ □□□ □?

A5 : □! □□□ □□□ □□□ □□□□ □□ □□□ □□ □□ □ □□□□.

Q6. □□□ □□ □ □ □□□□?

A6 : □, □□□ □□□ □□□ □□□ □□□ □□ □□□□□.

Q7. OEM □□ ODM □□□ □□□ □ □ □□□□?

A7 : □□□ □□ OEM□ □□ □□ □□ □□□ / ODM ORDERS. □□□ □□□□ □□□□ □□ □□ □□□□□□.

Q8. □□□ □□□ □□□□□□?

A8 : □ □□□ □□□ □□□ □□ □□ □ MOQ□ □□□ □□□ T / T□ □□ □ □ □□□□.