



□□ □□ :

□□□ □□□ □□□□ □□ □□ PCB□□ □□ □□□□□. □□□□ □□□ Ag □□ □□ □□□, □ □□□ □□ □□ □□ □□ □ □□ □□□ □□□□□. Ftheta□ □□□ □□□□ □□□ □ □□□□□.

Carmanhaas□ □□□□ □□□ □□ □□□□ □□□□□□. □□ □□ □□□ □□ □□ □□□ □□□□ □□ □□ □□□ □□□□ □ □□□ □□□□ □□□□□ □ □□□□□ □ □□□□□ □□□□□□ □ □□□□□.

□□:

- (1) □□ □□ □□□ $< \lambda / 5$, □□ □□□ □□ □□□ □□□ □□□□□□□□.
- (2) □ □□ □□ □□ □□□ $> 95 \%$;
- (3) □□□ □□□ $< 0.5\text{mm}$;
- (4) □□ □□ □□ □□ > 1.05 .



□□ □ □□ □□ :

1064nm F □□ □□

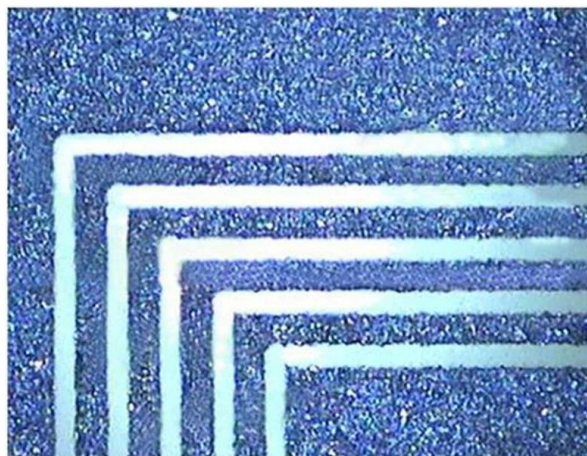
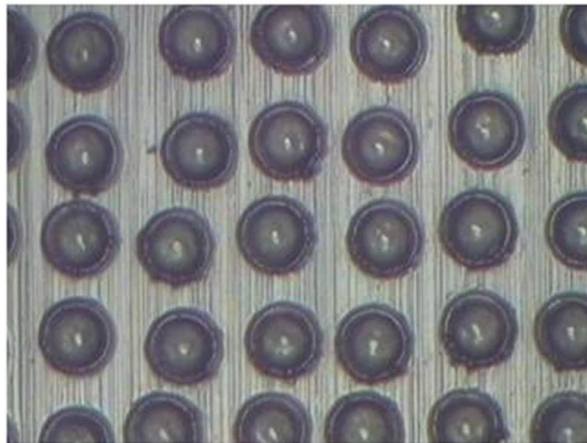
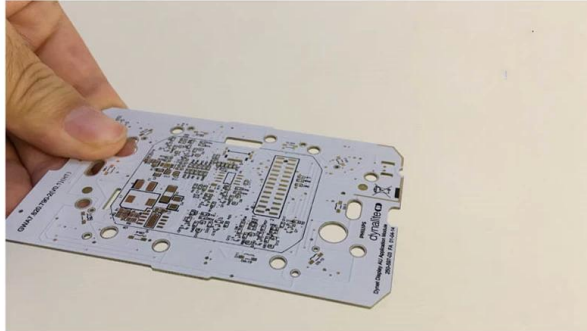
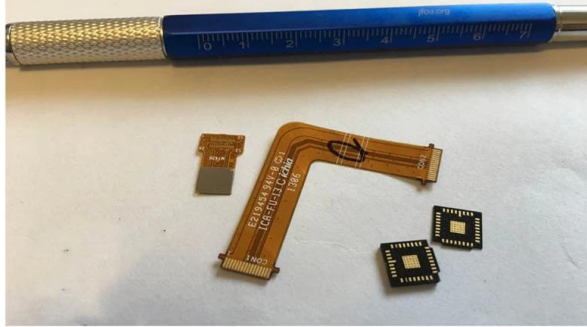
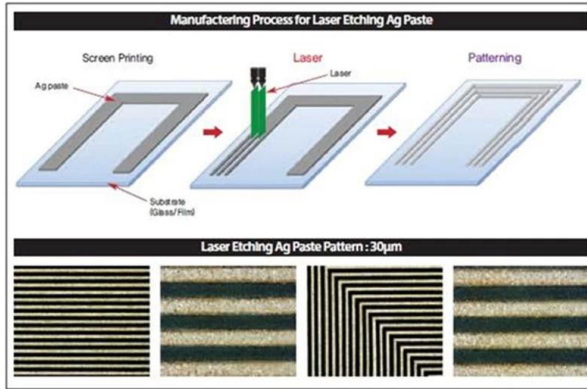
□□ □□	□□ □□(mm)	□□ □□ (mm)	□□ □□ □□ (mm)	□□ □□ (mm)	□□ □
SL-1064-140-200	200	140x140	14	208	M85x1
SL-1064-185-255- (16CA)	255	185x185	16	274	M85x1

1064nm □ □□□□

Part Description	Expansion Ratio	Input CA (mm)	Output CA (mm)	Housing Dia (mm)	Housing Length (mm)	Mounting Thread
BE-1064-D23:40.5-1.5x	1.5X	10	20.7	27	40.5	M22*0.75
BE4-(1030-1090)-D35:163.9-Z14x	1X-4X	20	35	44	163.9	/
BE4-(1030-1090)-D34:162.6-Z210x	2X-10X	14	34	40	162.6	/

1064nm □□

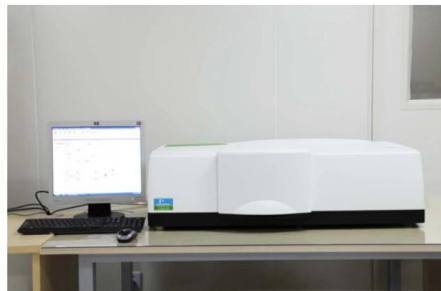
□□ (mm)	□□ (mm)	□□
25.4	6.35	HR @ 1030-1090nm, 45 ° AOI
30	5	HR @ 1030-1090nm, 45 ° AOI
50	10	HR @ 1030-1090nm, 45 ° AOI







TRIOPTICS OptiSpheric 2000 AF
---Testing EFL, R, Centering Error, Wedge Angle, BFL, MTF

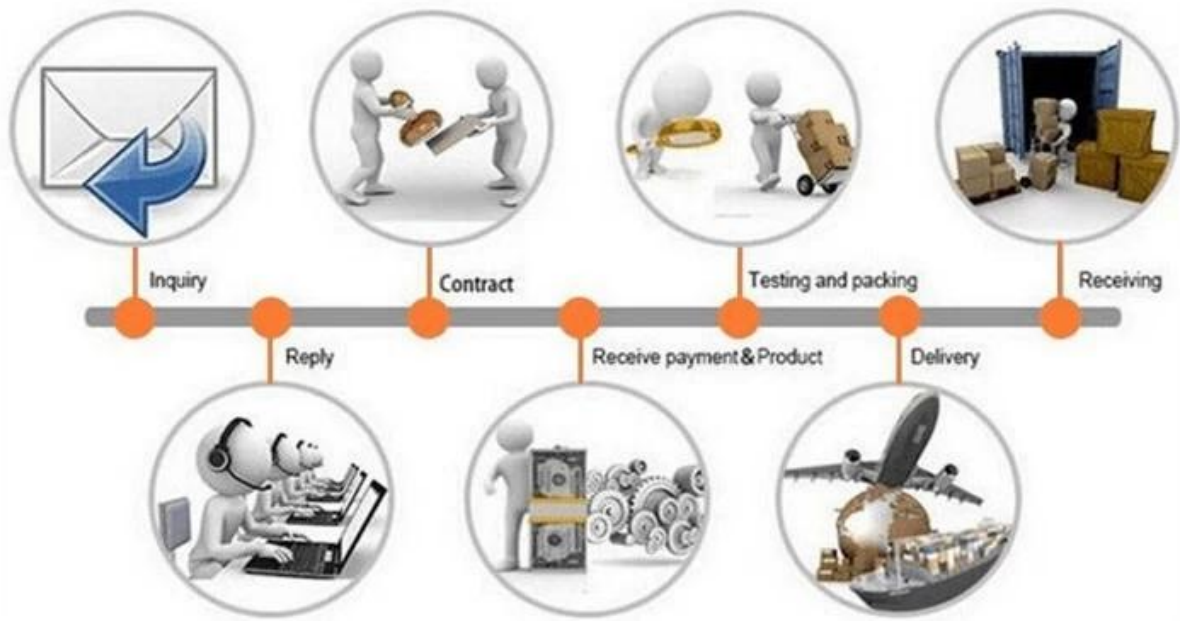


PerkinElmer Lambda 950---Testing Transmission and Reflectivity



Carmanhaas Coating Machine





□□ □□ :

□□□ □□□ □□ :

