

□□□ □ □□ □□ :

**1030nm-1090nm F □□ □□**

Part Description	Focal Length (mm)	Scan Field (mm)	Max Entrance Pupil (mm)	Working Distance(mm)	Mounting Thread
SL-(1030-1090)-100-170-M39*1	170	100x100	8	175	M39x1
SL-(1030-1090)-140-335-M39*1	335	140x140	10	370	M39x1
SL-(1030-1090)-110-340-M39*1	340	110x110	10	386	M39x1
SL-(1030-1090)-100-160-SCR	160	100x100	8	185	SCR
SL-(1030-1090)-140-210-SCR	210	140x140	10	240	SCR
SL-(1030-1090)-175-254-SCR	254	175x175	16	284	SCR
SL-(1030-1090)-112-160	160	112x112	10	195	M85x1
SL-(1030-1090)-105-170-(15CA)	170	105x105	15	215	M85x1
SL-(1030-1090)-150-210-(15CA)	210	150x150	15	269	M85x1
SL-(1030-1090)-175-254-(15CA)	254	175x175	15	317	M85x1
SL-(1030-1090)-180-340-(30CA)-M102*1-WC	340	180x180	30	417	M102x1
SL-(1030-1090)-180-400-(30CA)-M102*1-WC	400	180x180	30	491	M102x1
SL-(1030-1090)-250-500-(30CA)-M112*1-WC	500	250x250	30	607	M102x1

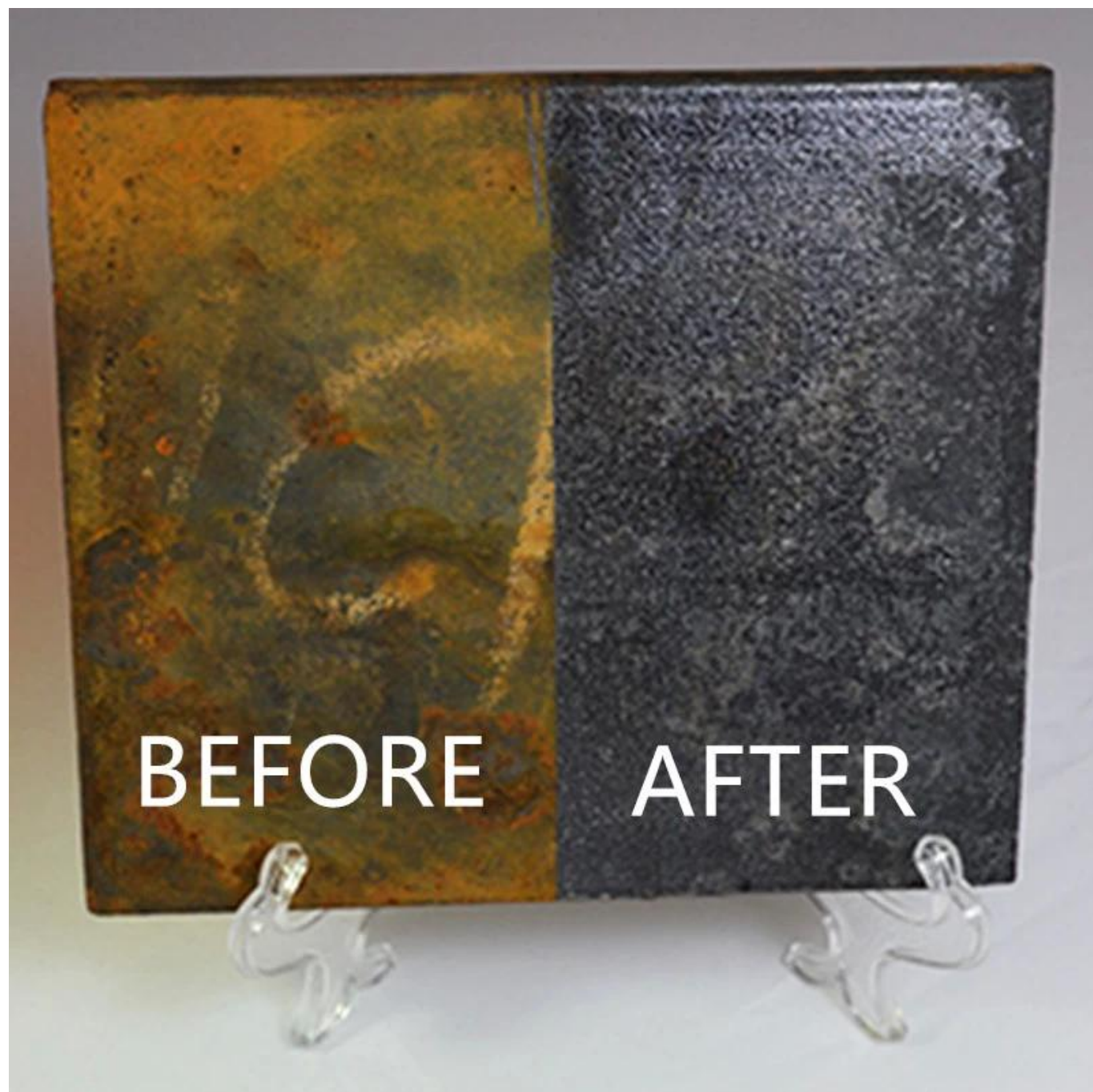
□□ : \* WC □ □□□ □□□□□□ □□ □□□ □□□□□□

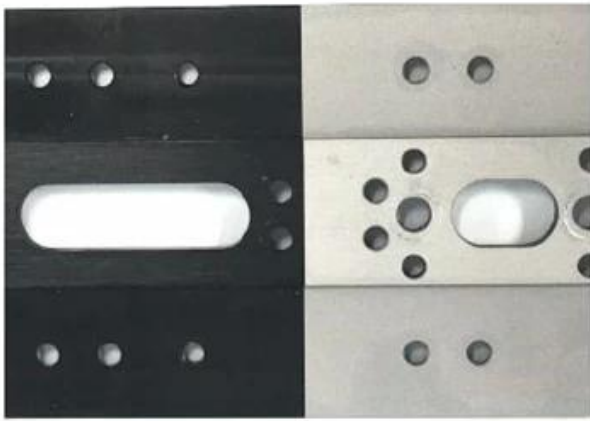
**QBH □□ □□ □□ □1030nm-1090nm□**

Part Description	Focal Length (mm)	Clear Aperture (mm)	NA	Coating
CL2-(1030-1090)-30-F60-QBH-A-WC	60	28	0.22	AR/AR@1030-1090nm
CL2-(1030-1090)-30-F75-QBH-A-WC	75	28	0.17	AR/AR@1030-1090nm
CL2-(1030-1090)-30-F100-QBH-A-WC	100	28	0.13	AR/AR@1030-1090nm
CL2-(1030-1090)-30-F125-QBH-A-WC	125	28	0.1	AR/AR@1030-1090nm
CL2-(1030-1090)-30-F150-QBH-A-WC	150	28	0.09	AR/AR@1030-1090nm
CL2-(1030-1090)-38-F75-QBH-A-WC	75	34	0.22	AR/AR@1030-1090nm
CL2-(1030-1090)-38-F100-QBH-A-WC	100	34	0.16	AR/AR@1030-1090nm
CL2-(1030-1090)-38-F125-QBH-A-WC	125	34	0.13	AR/AR@1030-1090nm
CL2-(1030-1090)-38-F135-QBH-A-WC	135	34	0.12	AR/AR@1030-1090nm
CL2-(1030-1090)-38-F150-QBH-A-WC	150	34	0.11	AR/AR@1030-1090nm
CL2-(1030-1090)-38-F200-QBH-A-WC	200	34	0.08	AR/AR@1030-1090nm

Is there a way to remove rust from metal?

Yes, there are several ways to remove rust from metal. One common method is to use a wire brush to scrub the rust away. Another method is to use a rust remover solution. You can also use a mixture of vinegar and salt to remove rust. The best method depends on the type of metal and the amount of rust.





BEFORE

AFTER



BEFORE

AFTER



BEFORE

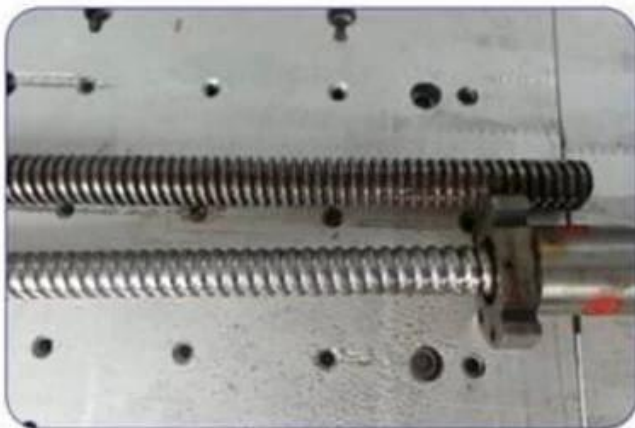
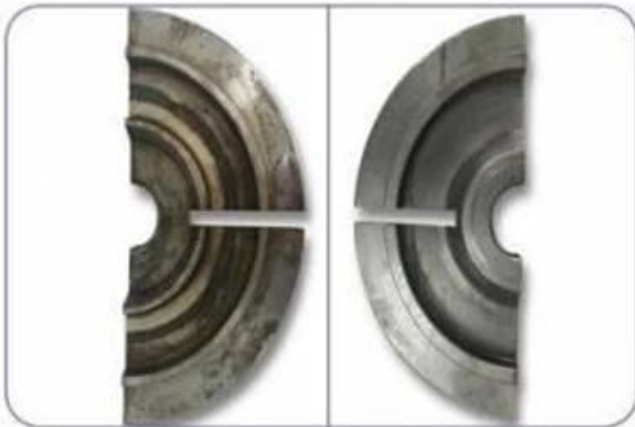


AFTER



BEFORE

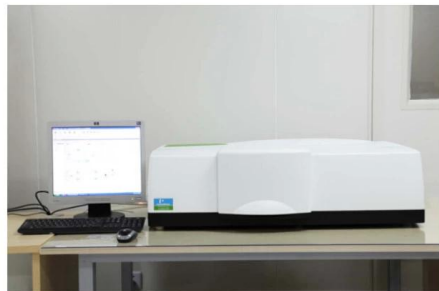
AFTER







**TRIOPTICS OptiSpheric 2000 AF**  
---Testing EFL, R, Centering Error, Wedge Angle, BFL, MTF



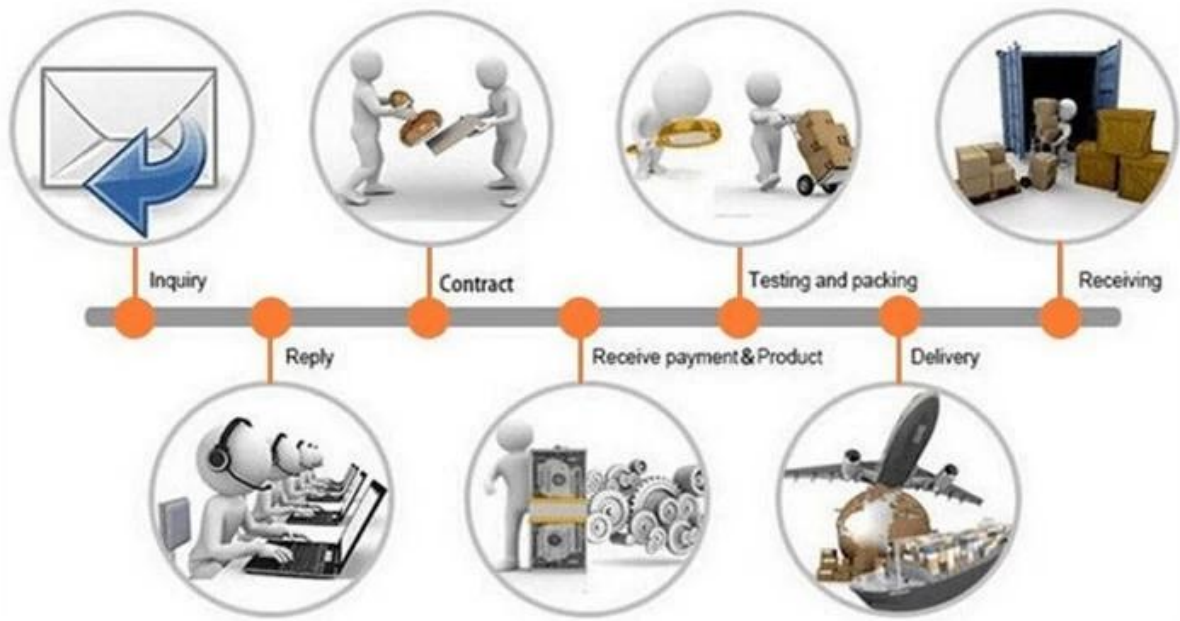
**PerkinElmer Lambda 950**---Testing Transmission and Reflectivity



**Carmanhaas Coating Machine**







□□ □□ :

□□□ □□□ □□ :

