

## CO2 Galvo Scanner Supplier China Aperture 16mm/20mm/30mm

### Product Introduction:

Carmanhaas has high end 2D laser scanning galvanometer, 3D laser scanning galvanometer, high power laser welding galvanometer, beauty galvanometer and laser cleaning solution.

Carmanhaas 2-axis Galvanometer Scanner Head including High Speed (A Series) and Standard Series, are designed for a board range of application including laser precision marking, laser cutting, laser welding, rapid prototyping, 3D printing, drilling location, laser cleaning, medical beauty and so on.

### Features:

1. Aperture: 7mm, 10mm, 12mm, 14mm, 16mm, 20mm, 30mm
2. Good degree of Linearity, high resolution small drift, precise repetitive positioning
3. Highest processing speeds in the industry to maximize production throughput
4. High-accuracy & high-stability models available for precise scanning applications
5. Wide range of cost-efficient, high-performance options for specific applications.

### PRODUCT DETAILS

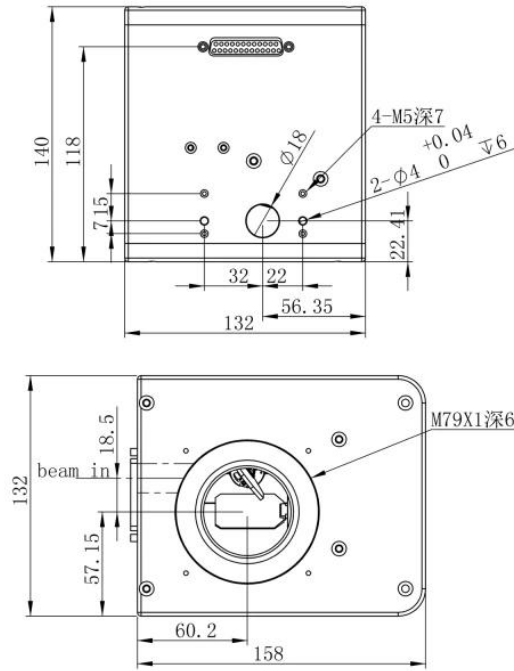
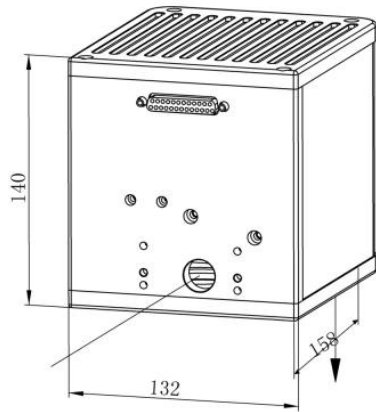


## Technical Parameters:

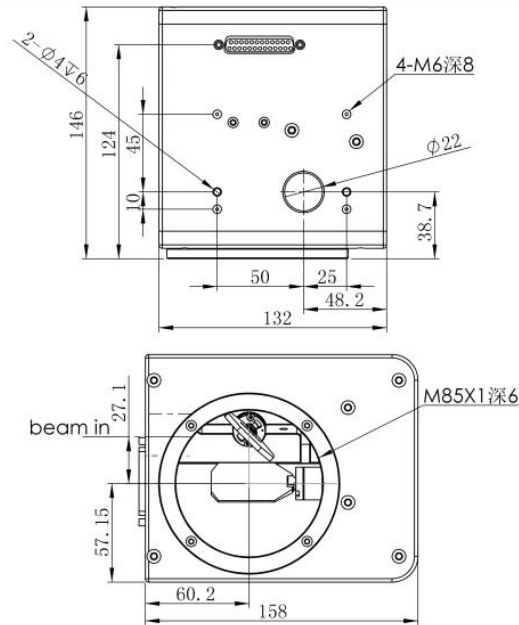
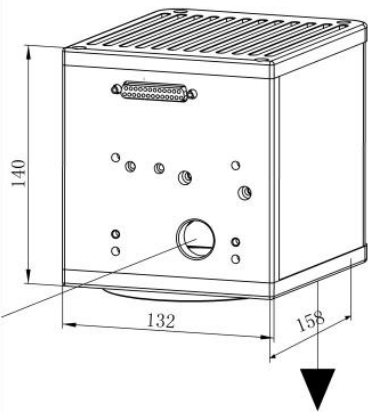
Model	ZB2D-16B	ZB2D-20B	ZB2D-30B
Aperture (mm)	16	20	30
Typical scan angle	$\pm 0.35$ rad	$\pm 0.35$ rad	$\pm 0.35$ rad
Nonlinearity	$< 0.5$ mrad	$< 0.5$ mrad	$< 0.5$ mrad
Tracking error	0.3ms	0.5ms	0.7ms
Step Response Time	$< 0.65$ ms	/	/
Repeatability	$< 15$ urad	$< 15$ urad	$< 15$ urad
Gain drift	$< 50$ ppm/K	$< 30$ ppm/K	$< 30$ ppm/K
Zero drift	$< 30$ urad/K	$< 15$ urad/K	$< 15$ urad/K
Long-term drift over 8hours□After 30 min warn-up□	$< 0.1$ mrad	$< 0.05$ mrad	$< 0.05$ mrad
Marking speed	1.0m/s	1.0m/s	0.05m/s
Positioning speed	7m/s	4m/s	2m/s
Power requirements	$\pm 15$ VDC Max.5A	$\pm 15$ VDC Max.5A	$\pm 15$ VDC Max.5A
Digital Signal	XY2-100 or SPI	XY2-100 or SPI	XY2-100 or SPI
Analog Signal	$\pm 5$ V	$\pm 5$ V	$\pm 5$ V
Reflection wavelength	10600nm(10.6um) 9300nm(9.3um) 1064nm	10600nm(10.6um) 9300nm(9.3um) 1064nm	10600nm(10.6um) 9300nm (9.3um) 1064nm
Operating temperature	25°C $\pm$ 10°C	25°C $\pm$ 10°C	25°C $\pm$ 10°C

## Mechanical Dimensions(mm)□

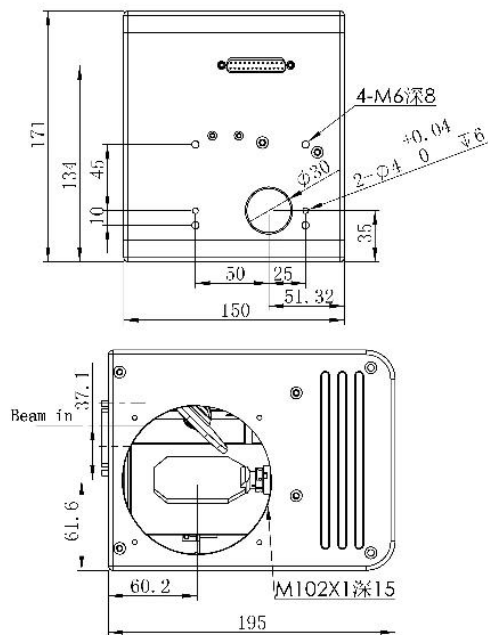
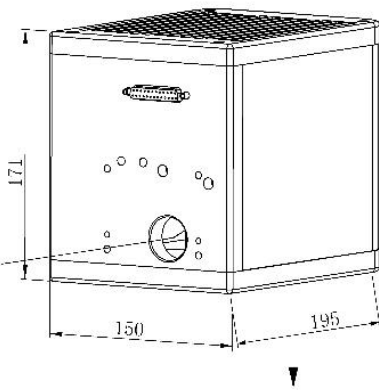
# ZB2D-16B



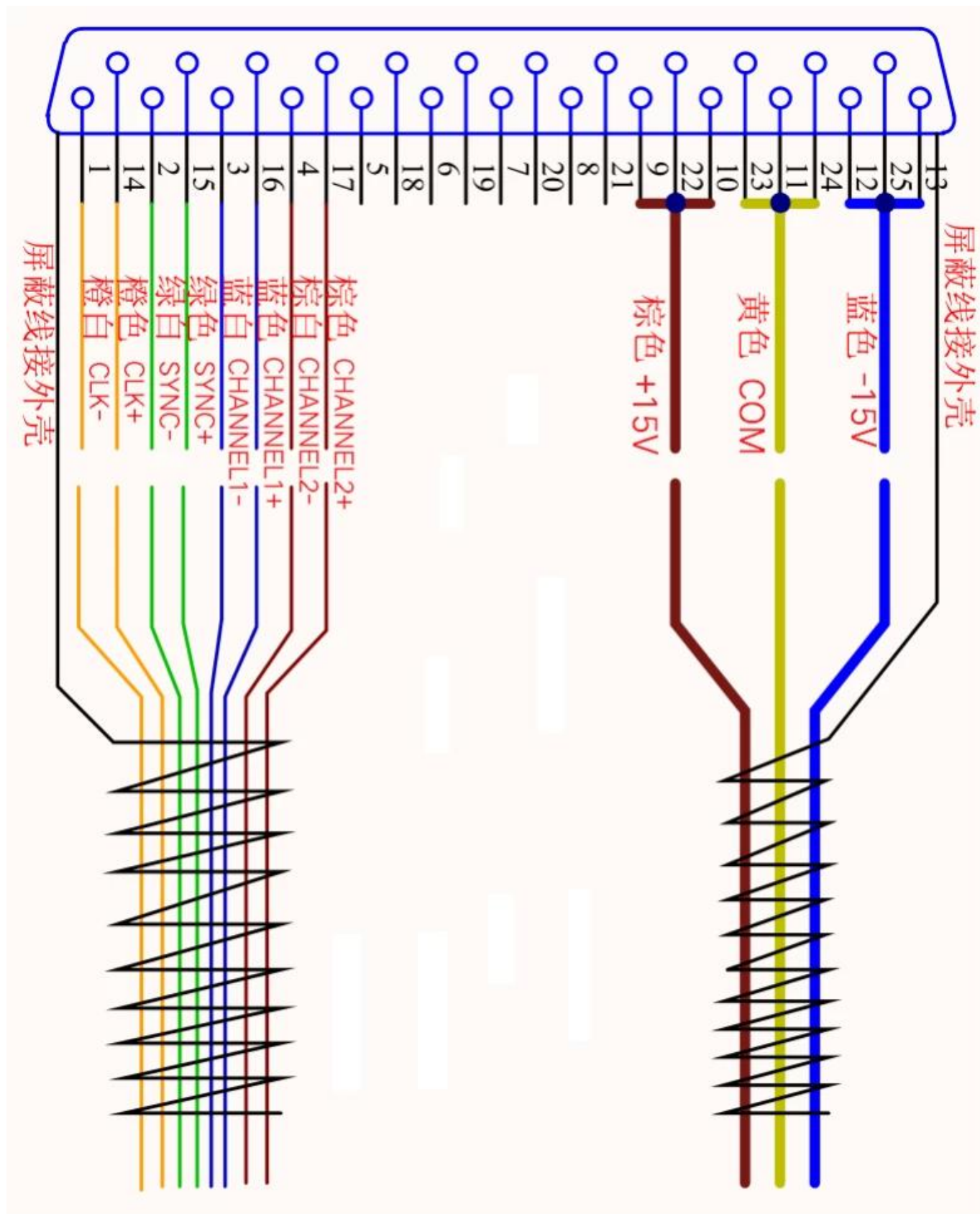
# ZB2D-20B



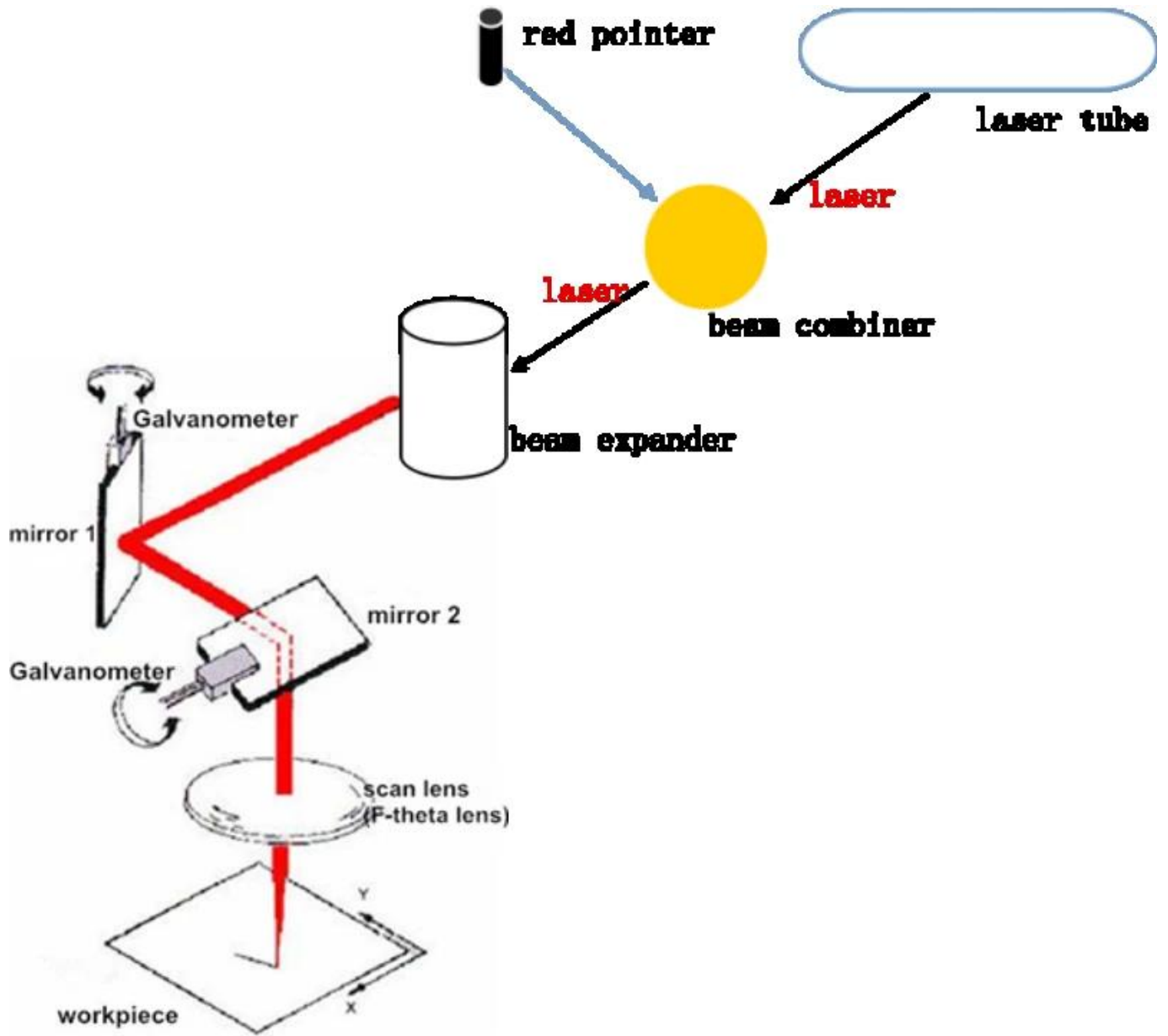
# ZB2D-30B



**Electrical interface definition:**



**Application:**



**Related Products:**



**ZnSe F-theta Scan Lens**



**ZnSe Beam Expander  
2X, 3X, 106um**

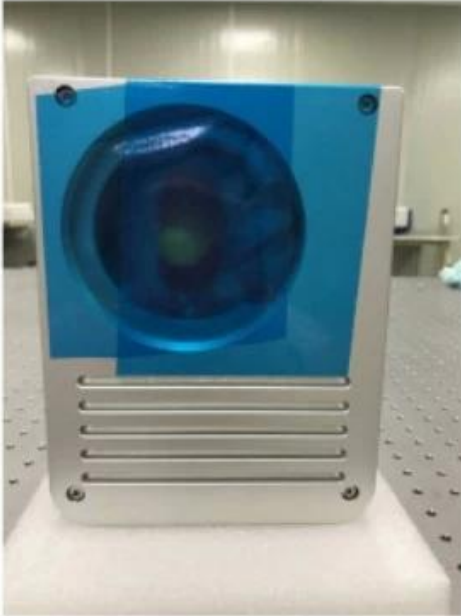


**CO2 Glass Tube  
Reci, Yongli, EFR, SPT  
60W-180W**





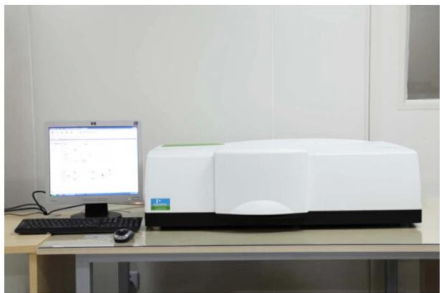
## Packaging & Shipping



**Company Information:**



**TRIOPTICS OptiSpheric 2000 AF**  
---Testing EFL, R, Centering Error, Wedge Angle, BFL, MTF



**PerkinElmer Lambda 950**---Testing Transmission and Reflectivity



**Carmanhaas Coating Machine**



