

Product Information

Product Description:

[Laser marking and engraving systems supplier China](#), Carmanhaas CO2 laser marking machine adopts CO2 radio frequency laser and high-speed scanning galvanometer system. The whole machine system has high marking accuracy, fast speed and stable performance, and can be applied to large-scale online processing flow production lines.

Product Features:

- (1) High-performance CO2 laser, good marking quality, fast processing speed, high productivity
- (2) The fuselage structure design is compact, the lifting platform is stable, the floor space is small, and the space utilization rate is high
- (3) Non-contact processing, no damage to products, no tool wear, good marking quality;
- (4) The beam quality is good, the loss is low, and the processing heat affected area is small.
- (5) High processing efficiency, computer control and easy automation

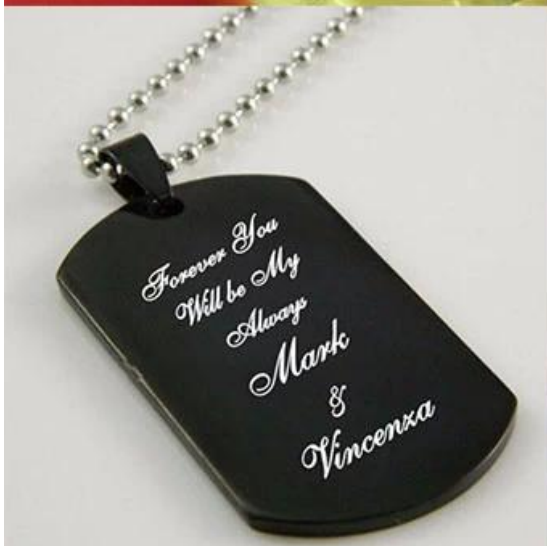
[CO2 Laser marking machine price china](#)

Application industry:

Widely used in food and beverage, cosmetics, medicine, cigarettes, electronic components, clothing, craft gifts and other industries

Applicable Materials

Material	Fiber Laser	Material	Co2 Laser
Stainless Steel	✓	Wood	✓
Aluminum	✓	Acrylic	✓
ABS	✓	Fabric	✓
Brass	✓	Glass	✓
Carbon Fiber	✓	Coated Metals	✓
Carbon Nanotube	✓	Ceramic	✓
Cobalt Chrome Steel	✓	Delrin	✓
Colored Delrin	✓	Cloth	✓
Copper	✓	Leather	✓
Diallyl Phthalate	✓	Marble	✓
Glass Filled PEEK	✓	Matte Board	✓
Glass Filled Teflon	✓	Melamine	✓
Magnesium	✓	Paper	✓
Metal Plated Ceramics	✓	Mylar	✓
Molybdenum	✓	Pressboard	✓
Mild Steel	✓	Rubber	✓
Nylon	✓	Wood Veneer	✓
Polybutylene Terephthalate	✓	Fiberglass	✓
Polysulphone	✓	Painted Metals	✓
PET	✓	Tile	✓
Santoprene	✓	Plastic	✓
Silicon Carbide	✓	Cork	✓
Silicon Steel	✓	Corian	✓
Silicon Wafers	✓	Anodized Aluminum	✓

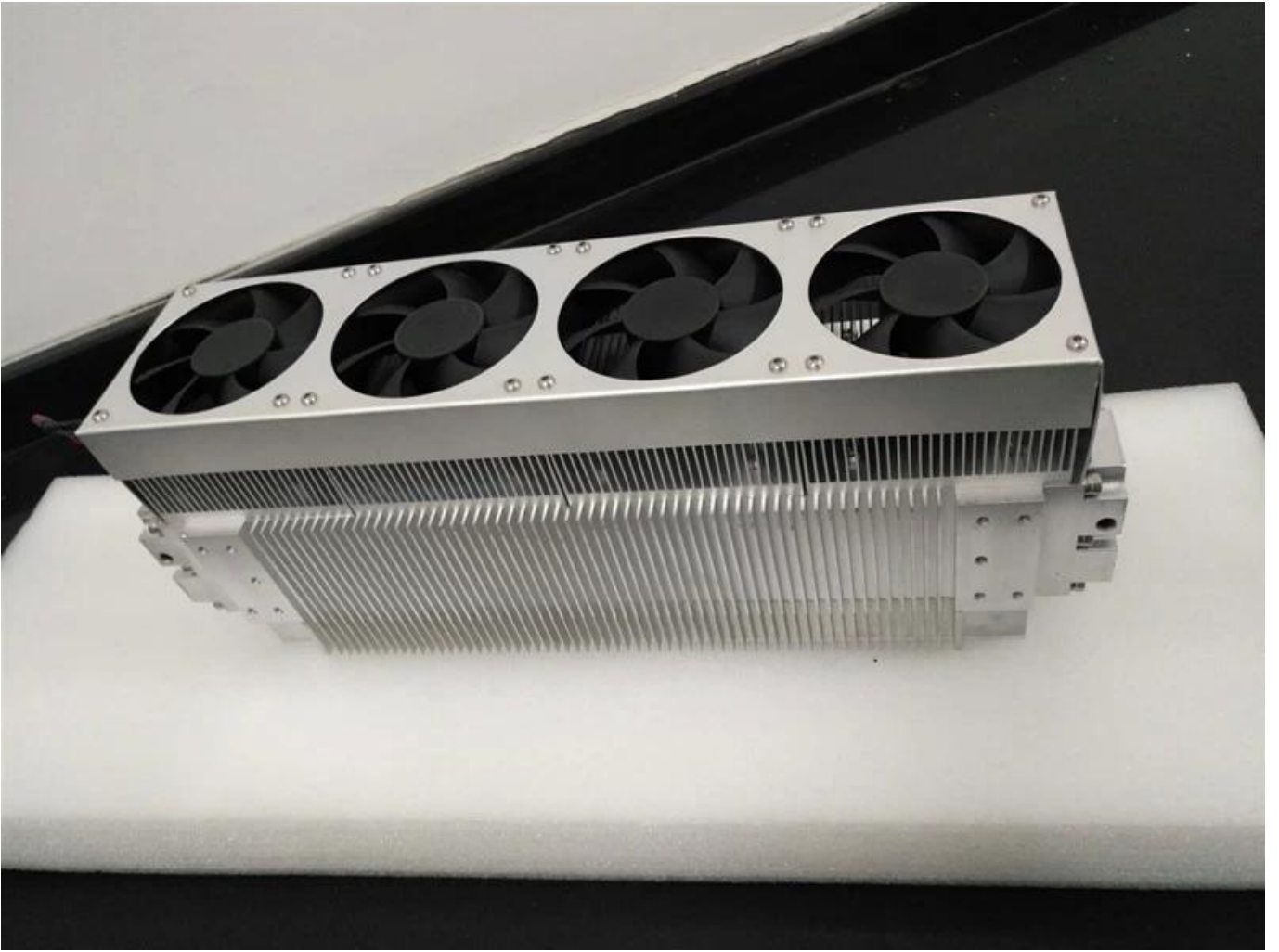












Technical Parameters:

P/N	LMCH-20	LMCH-30	LMCH-40	LMCH-60
Laser Output Power	20W	30W	40W	60W
Wavelength	10.6um/9.3um	10.6um/9.3um	10.6um/9.3um	10.6um
Beam Quality	≤1.2	≤1.2	≤1.2	≤1.2
Marking Area	50x50~300x300mm	50x50~300x300mm	50x50~300x300mm	50x50~300x300mm
Marking Speed	≤7000mm/s	≤7000mm/s	≤7000mm/s	≤7000mm/s
Minimum line width	0.1mm	0.1mm	0.1mm	0.1mm
Minimum character	0.2mm	0.2mm	0.2mm	0.2mm
Repeat accuracy	±0.003mm	±0.003mm	±0.003mm	±0.003mm
Electricity	220±10%, 50/60Hz , 5A	220±10%, 50/60Hz , 5A	220±10%, 50/60Hz , 5A	220±10%, 50/60Hz , 5A
Machine Size	750mmx600mmx140 0mm	750mmx600mmx14 00mm	750mmx600mmx140 0mm	750mmx600mmx140 0mm
Cooling system	Air Cooling	Air Cooling	Air Cooling	Air Cooling

Marking Samples



Factory&Certificate







C E R T I F I C A T E

ATTESTATION CERTIFICATE OF MACHINERY AND LOW VOLTAGE DIRECTIVES

Technical file of the company mentioned below has been observed and audit has been completed successfully. 2006/42/EC Machinery Directive and 2014/ 35/EU Low Voltage Directive have been taken as references for these processes

Company Name : **Caman HAAS Laser Technology (Suzhou) Co., Ltd.**

Company Address : No 155, West Road Suhong, Suzhou Industrial Park, Suzhou City, Jiangsu , P.R.China

Related Directives and Annex : **Low Voltage Directive 2014/35/EU
Machinery Directive 2006/42/EC**

Related Standards : **EN ISO 12100:2010; EN 60204-1:2006+A1:2009+AC:2010**

Product Name : **Laser Marking Machine**

Report No and Date : SD-90049717;09.08.2018

Product Brand/Model/Type : LMCH-3W,LMCH-5W,LMCH-10W,LMCH-15W,LMCH-20W,LMCH-25W,
LMCH-30W,LMCH-50W,LMCH-60W,LMCH-70W,LMCH-100W,
LMCH-120W,LMCH-150W,LMCH-200W,LMCH-300W,LMCH-500W

Certificate Number : **M.2018.201.N6073**

Initial Assessment Date : 10.08.2018

Registration Date : 13.08.2018

Reissue Date/No :

Expiry Date : 12.08.2023


UDEM International Certification
Auditing Training Centre Industry
and Trade Inc. Co.

The validity of the certificate can be checked through www.udem.com.tr. The CE mark shown on the right can only be used under the responsibility of the manufacturer with the completion of EC Declaration of Conformity for all the relevant Directives. This certificate remains the property of UDEM International Certification Auditing Training Centre Industry and Trade Inc. Co. to whom it must be returned upon request. The above named firm must keep a copy of this certificate for 15 years from the registration of certificate. This certificate only covers the product(s) stated above and UDEM must be noticed in case of any changes on the product(s)

Address: Mutlukent Mahallesi 2073 Sokak (Eski 93 Sokak) No:10 Çankaya - Ankara - TURKEY

Phone: +90 0312 443 03 90 **Fax:** +90 0312 443 03 76

E-mail: info@udemltd.com.tr www.udem.com.tr





Certificate of Approval

Certificate No. : 10119Q12565ROM

Awarded to

**Carman Haas Laser Technology(SuZhou)
Co., Ltd.**

Organization Code Certificate No. / Unified Social Credit Code:91320594MA1MF4EP56
Add.:No.155, West Road Suhong, Suzhou Industrial Park, Suzhou City, Jiangsu Province, P.R. China. 215000

*Beijing ZhongLian TianRun Certification Center (ZLTR) certify that the
Quality Management System of the above organization has been assessed and found to be
in accordance with the requirements of the standard:
GB/T19001-2016 / ISO9001:2015*

SCOPE OF CERTIFICATION/REGISTRATION

**The Research and Development and Production of Optics Lenses (Except the limits of
national laws and regulations.)**

*This certificate is made valid when used with certification scopes and the requirements of applicable
laws and regulations. These requirements include, but are not limited to, administrative permits,
scopes of qualifications, and CCC requirements.*

Subject to operation conditions in requirements conformity with Quality Management System,

This Certificate is valid for a period of three years only,

Date from: Mar 13th,2019 To: Mar 12th,2022

*The effectiveness of this Certificate shall be Validated by periodic surveillance audit
of ZLTR for maintenance.*

Information of this certificate can be found on the official website of Beijing Zhonglian Tianrun
Certification center (<http://www.zltr.com.cn>)



Beijing Zhongliantianrun Certification Center

Room2603, 22nd Floor, 2nd Unit, Block 1, No.4 Yard, Qiyang Road, Chaoyang District, Beijing, P.R. China 100102

Information of this certificate can be found on the official website of Certification and Accreditation Administration of the People's Republic of China (<http://www.cnca.gov.cn>)

ISO 9001

ISO 9001

Packing Details



Item Name		Quantity
Laser Marking Machine	Carmanhaas	1 set
Machine body	Split	
Foot Switch		1 set
AC Power cord (Optional)	EU/USA /National Standard	1 set
Wrench tool		1 set
30cm Ruler		1 piece
User Manual		1 piece

Lasers Protective Goggles	10.6um	1 piece
---------------------------	--------	---------



Package details	One set in a wooden case
Single package size	80x90x58cm
Single gross weight	90Kg
Delivery time	Shipped in 2 days after receiving full payment

Return Policy:

We provide a free **ONE YEAR Full Machine WARRANTY** and **TWO YEARS Laser Source WARRANTY**
Should returns be required:

- Step 1) Contact us with this website email.
- Step 2) Provide as much detail as possible about the problem you are having.
- Step 3) Authorization to return the item will be issued.
- Step 4) Return the item for the agreed replacement or refund.

FAQ:

Q1. Are you a manufacturer?

A1: Yes, we are professional and experienced manufacturer with our own molds and production lines.

Q2. How about quality of products?

A2: Our technicians and QC teams test the products one by one using aging line, professional devices and instruments to ensure the quality for all products.

Q3. How about price?

A3: We are a manufacturer and always offer our customers the most competitive prices.

Q4. How to place an order?

A4: Contact with online service, or sent email to us directly, we will reply to you with product price, specifications, packing etc. soon. Thank you.

Q5. May I send material to test marking performance?

A5: Yes! You are welcome to send material to test our superior quality and service.

Q6. Can I visit your factory?

A6: Yes, welcome to visit our factory at your convenient time.

Q7. How can I make OEM or ODM orders?

A7: We have different print processing for different OEM/ODM orders. Please contact us with online service or send email to us directly.

Q8. How should I pay for my orders?

A8: You can pay by T/T would be available for qualified bank and MOQ required for each order.

Logistics:

(1)For Laser Optics order delivery,can be optional with DHL, UPS, FedEx, TNT, EMS etc

(2)For Laser machine order delivery, can be optional with terms of EXWork, FOB, CNF, CIF By Air or by Sea based on the buyer's forwarders or ours.