

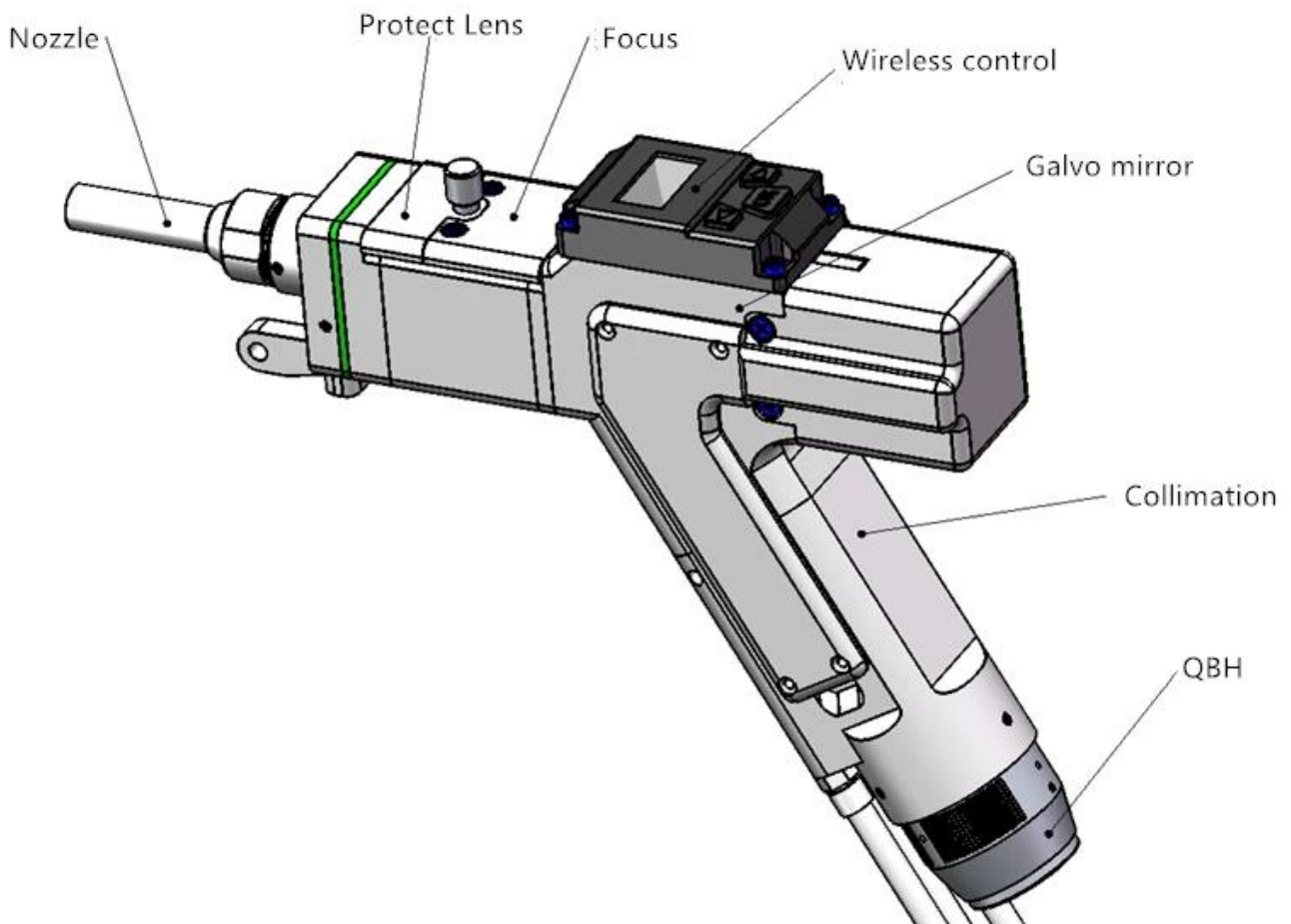
Product Information

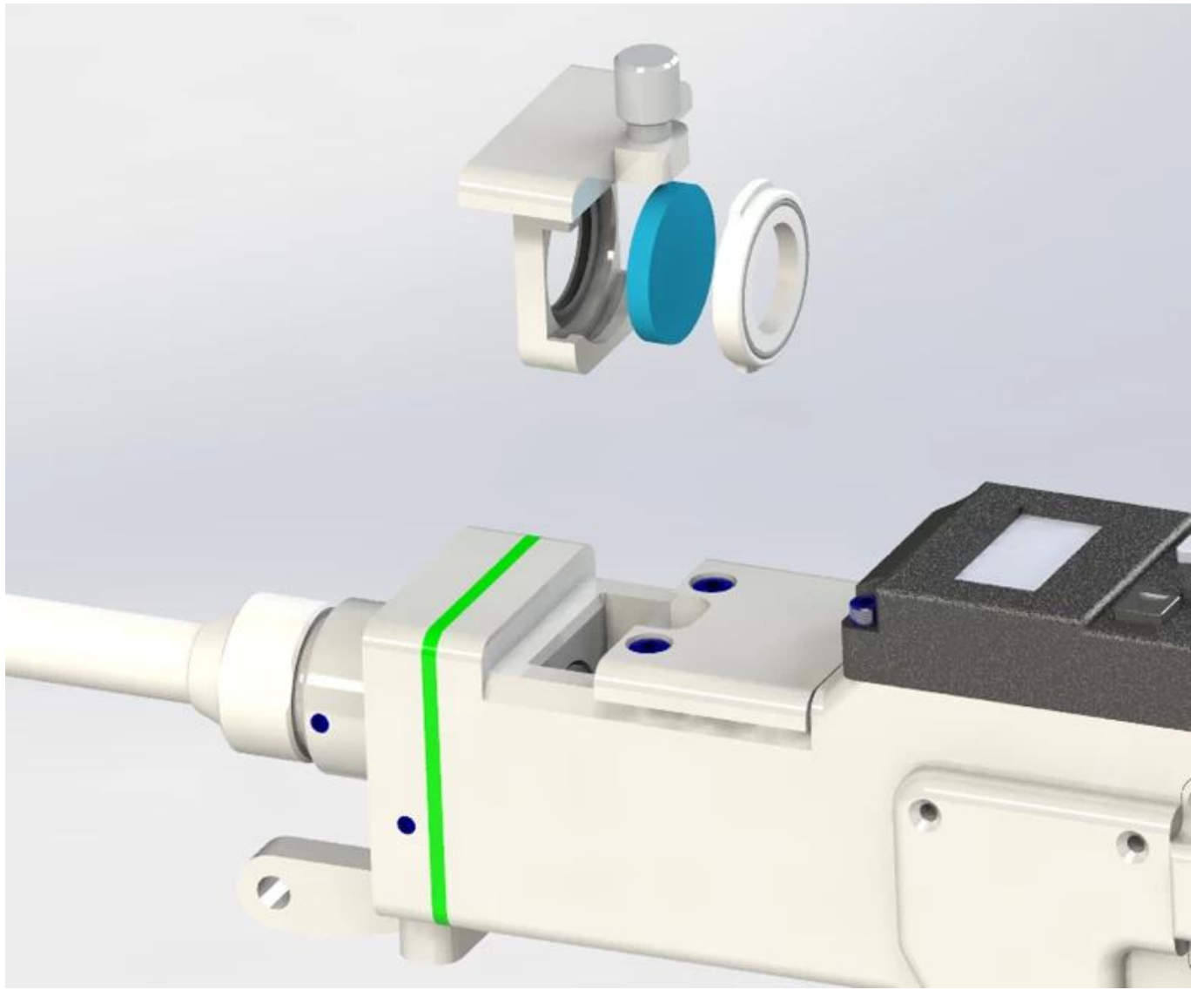
Product Description:

Laser welding is a new welding method and handheld laser welding is more widely used. CARMANHAAS the [China Handheld Welding Manufacturer](#) supply of laser welding machine has the advantages of beautiful appearance, small and light weight, wide use range, simple operation and fine weld seam, which greatly improves the welding efficiency and quality. Hand-held laser welding solves the existing welding problems such as poor welding of corners, insufficient welding, post-processing of welds, unsightly welds, and so on. It is the first choice for most metal welding.

Structure composition

Carmanhaas welding head consists of seven basic units: QBH connector, collimation module, galvanometer module, wireless control module, focusing module, protective mirror module and nozzle module.







Technical Parameter:

Model:	HW960
Laser power	Max.2000W

Optical fiber interface type	QBH
Focus lens specifications	Dia=20mm F=150mm
Collimating lens specifications	Dia=20mm F=50mm
Maximum clear aperture diameter	16mm
Laser wavelength	1064nm
Welding head weight	≤1000g
Maximum external size of welding head (width)	47mm
Nozzle size	Outer diameter 10mm, tolerance -0.02mm to -0.04mm, length 72.5mm

[China 1000W handheld welder head fiber laser factory](#)

Applicable materials:

Laser welding machine can be used in welding stainless steel, aluminum, copper, chromium, nickel, titanium and other metals or alloys.

1. 1000w/1kw handheld laser welder can weld 0.5-2mm steel;
2. 1500w/1.5kw fiber laser welder is used to weld 0.5-3mm steel;
3. 2000w/2kw laser welder can weld 0.5-4mm steel, 0.5-3mm aluminum.

* The above data is based on the triangular light spot.

* Due to the difference of the plate and labor, please refer to the actual welding.

Our Service

Pre-sale service

(1) Free sample marking

For free sample testing, please send us your file, we will do marking here and make video to show you the effect, or send sample to you for checking quality.

(2) Customized machine design

According to customer's application, we may revise our machine accordingly for customer's convenience and high production efficiency.

After-sale Service

(1) Installation:

After the machine reaches the buyer's site, the engineers from the seller are responsible for machine installation and commissioning by using the special tools under the help of the buyer. Buyer should pay for our engineer visa fee, air tickets, accommodation, meals etc.

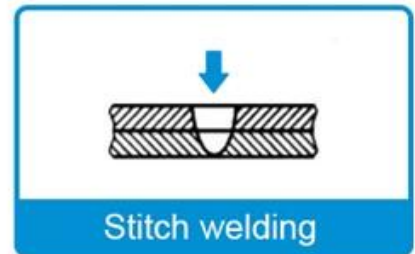
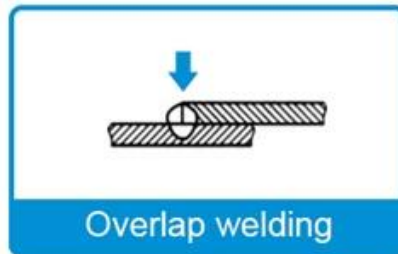
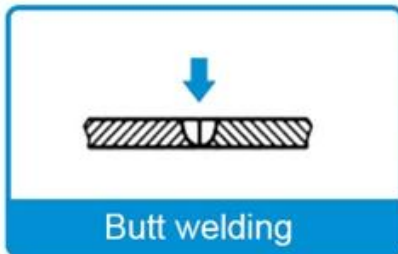
(2)Training:

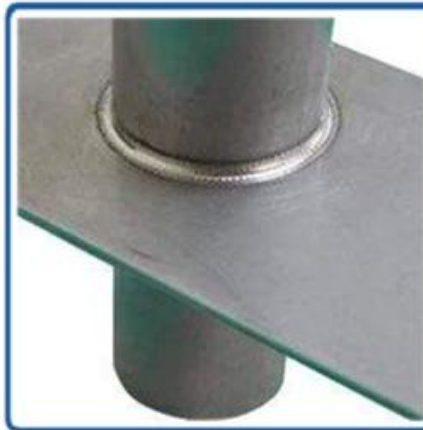
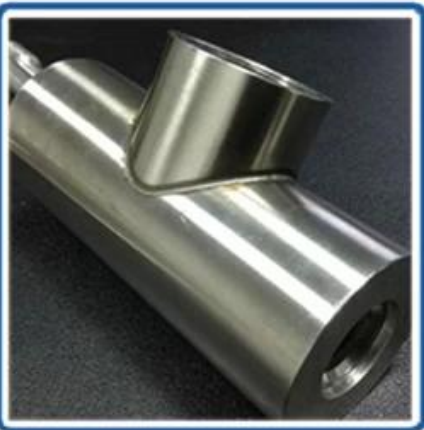
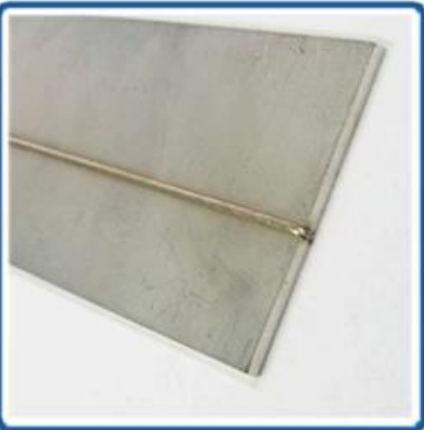
In order to provide training in safe operation, programming and maintenance, Machine Supplier shall provide qualified instructors after Buyer finally installs the equipment.

- 1.Mechanical maintenance training
- 2.Gas / electronic maintenance training
- 3.Optical maintenance training
- 4.Programming training
- 5.Advanced operation training
- 6.Laser safety training

Click to learn more: [Handheld Welding Supplier China](#)

Welding Samples :



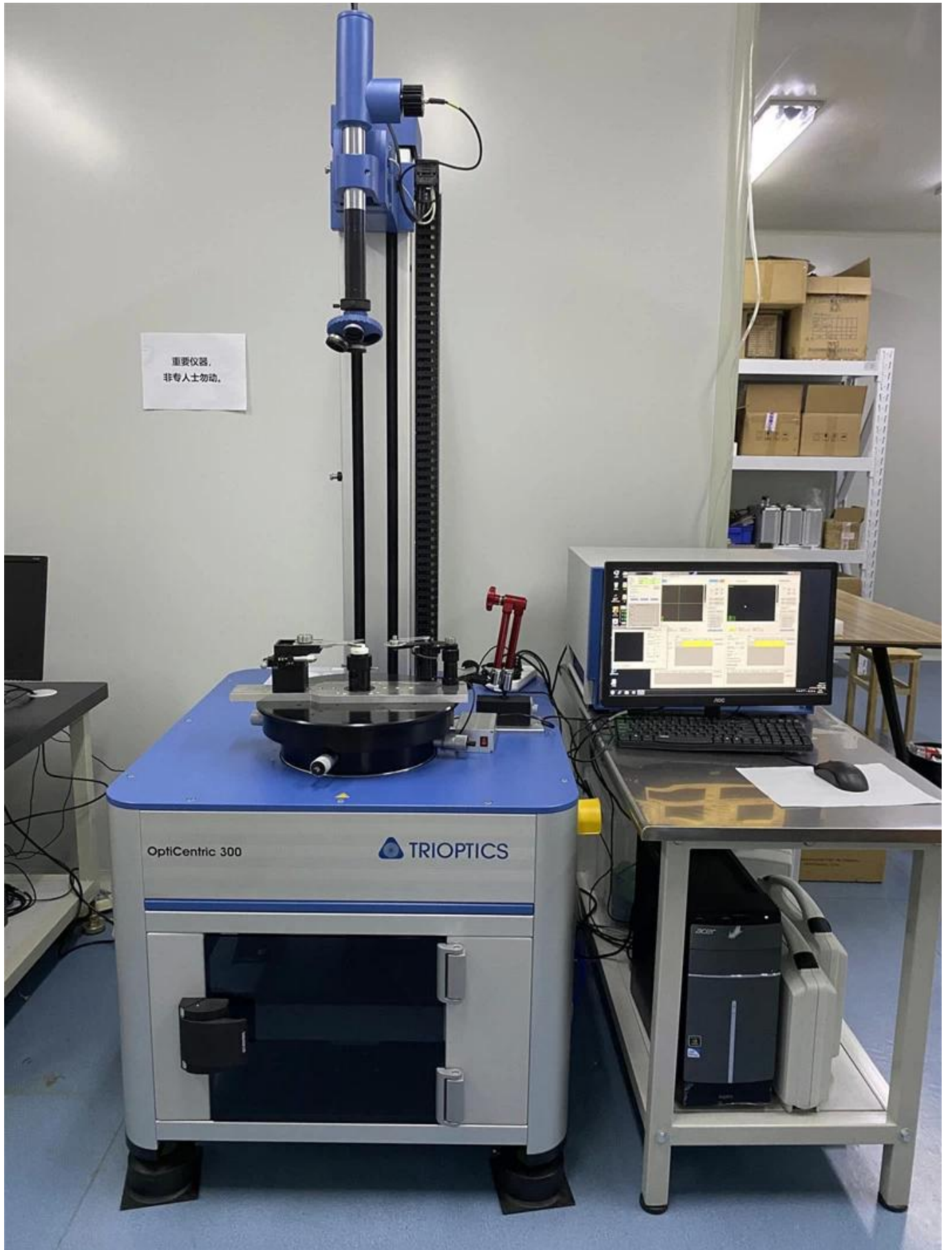




Factory





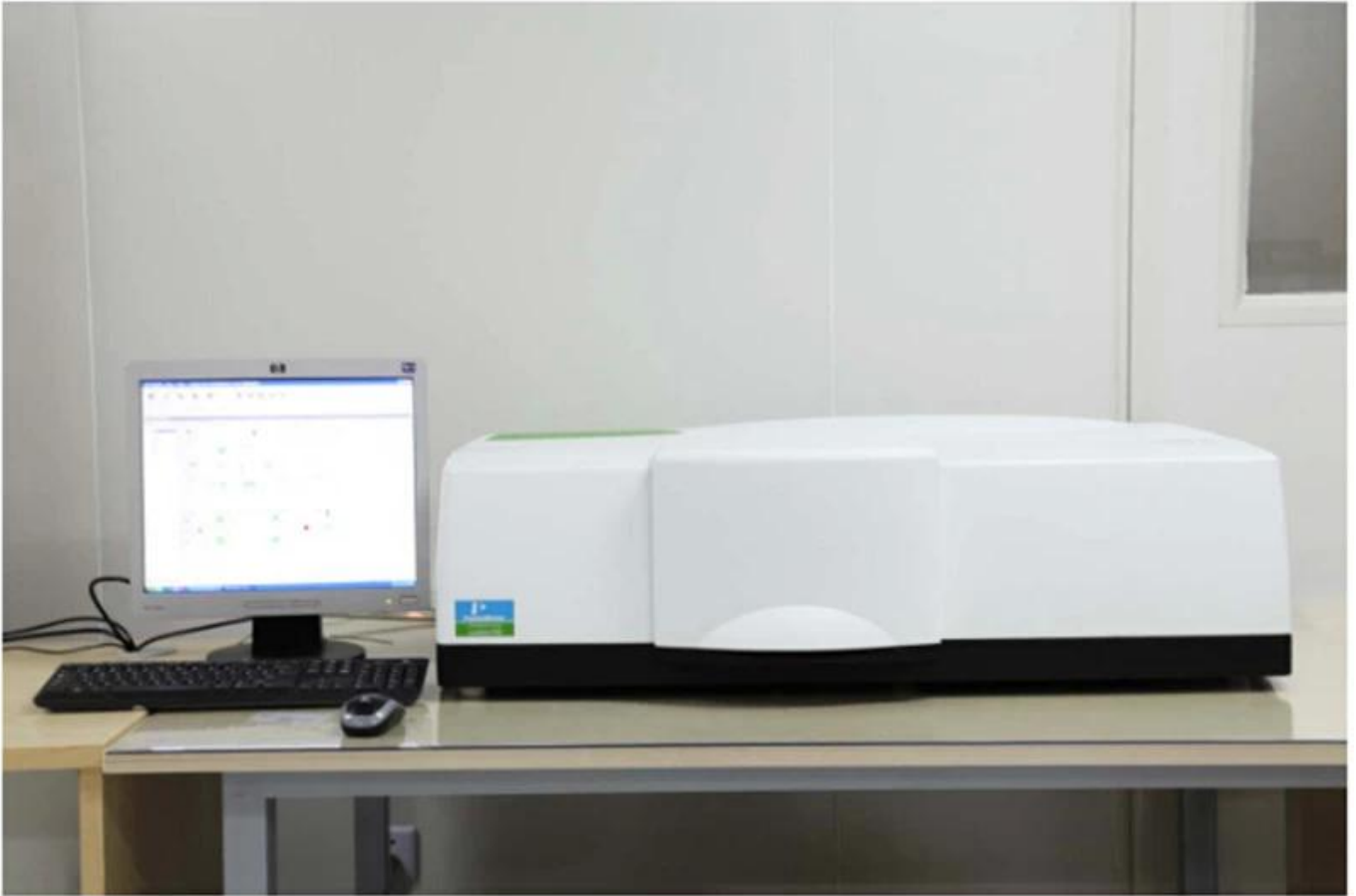


重要仪器,
非专业人士勿动。

OptiCentric 300

TRIOPTICS





PerkinElmer Lambda 950---Testing Transmission and Reflectivity



Certificate&Exhibition



CERTIFICATE

ATTESTATION CERTIFICATE OF MACHINERY AND LOW VOLTAGE DIRECTIVES

Technical file of the company mentioned below has been observed and audit has been completed successfully. 2006/42/EC Machinery Directive and 2014/ 35/EU Low Voltage Directive have been taken as references for these processes

Company Name : **Camman HAAS Laser Technology (Suzhou) Co., Ltd.**

Company Address : No 155, West Road Suhong, Suzhou Industrial Park, Suzhou City, Jiangsu , P.R.China

Related Directives and Annex : **Low Voltage Directive 2014/35/EU
Machinery Directive 2006/42/EC**

Related Standards : **EN ISO 12100:2010; EN 60204-1:2006+A1:2009+AC:2010**

Product Name : **Laser Marking Machine**

Report No and Date : SD-90049717.09.08.2018

Product Brand/Model/Type : LMCH-3W,LMCH-5W,LMCH-10W,LMCH-15W,LMCH-20W,LMCH-25W,
LMCH-30W,LMCH-50W,LMCH-60W,LMCH-70W,LMCH-100W,
LMCH-120W,LMCH-150W,LMCH-200W,LMCH-300W,LMCH-500W

Certificate Number : **M.2018.201.N6073**

Initial Assessment Date : 10.08.2018

Registration Date : 13.08.2018

Reissue Date/No :

Expiry Date : **12.08.2023**


UDEM International Certification
Auditing Training Centre Industry
and Trade Inc. Co.

The validity of the certificate can be checked through www.udem.com.tr. The CE mark shown on the right can only be used under the responsibility of the manufacturer with the completion of EC Declaration of Conformity for all the relevant Directives. This certificate remains the property of UDEM International Certification Auditing Training Centre Industry and Trade Inc. Co. to whom it must be returned upon request. The above-mentioned firm must keep a copy of this certificate for 15 years from the registration of certificate. This certificate only covers the product(s) stated above and UDEM must be notified in case of any changes on the product(s).
Address: Mithakere Mahallesi 2073 Sokak (Eski 93 Sokak) No:10 Çankaya - Ankara - TÜRKİYE
Phone: +90 0312 443 03 90 Fax: +90 0312 443 03 76
E-mail: info@udemtd.com.tr www.udem.com.tr



Certificate of Approval

Certificate No.: 10119Q12565R0M

Awarded to

**Carman Haas Laser Technology(SuZhou)
Co., Ltd.**

Organization Code Certificate No. / Unified Social Credit Code:91320594MA1MF4EP56
Add.:No.155, West Road Suhong, Suzhou Industrial Park, Suzhou City, Jiangsu Province, P.R. China. 215000

Beijing ZhongLianTianRun Certification Center (ZLTR) certify that the
Quality Management System of the above organization has been assessed and found to be
in accordance with the requirements of the standard:
GB/T19001-2016 / ISO9001:2015

SCOPE OF CERTIFICATION/REGISTRATION

The Research and Development and Production of Optics Lenses (Except the limits of national laws and regulations.)

This certificate is made valid when used with certification scopes and the requirements of applicable laws and regulations. These requirements include, but are not limited to, administrative permits, scopes of qualifications, and CCC requirements.

Subject to operation conditions in requirements conformity with Quality Management System.

This Certificate is valid for a period of three years only.

Date from: Mar 13th,2019 To: Mar 12th,2022

The effectiveness of this Certificate shall be Validated by periodic surveillance audit of ZLTR for maintenance.

Information of this certificate can be found on the official website of Beijing Zhonglian Tianrun Certification center (<http://www.zltr.com.cn>)



Beijing ZhongLiantianrun Certification Center

Room2003, 22nd Floor, 2nd Unit, Block 1, No.4 Yard, Qiyang Road, Chaoyang District, Beijing, P.R. China 100022

Information of the certificate can be found on the official website of Certification and Accreditation Administration of the People's Republic of China (<http://www.cnca.gov.cn>)

ISO 9001

ISO 9001



Packing List

P/N	Item Name		Quantity
	Handheld laser welding head	Carmanhaas	1 set
Free Accessories			
1	Spare copper nozzle		7pcs
2	Spare protective lens		5pcs
3	Laser Protective Goggles	1064nm	1 pc

Note: The above table is only for the standard factory configuration



Return Policy:

We provide a free ONE YEAR Full Machine WARRANTY and TWO YEARS Laser Source WARRANTY

Should returns be required:

Step 1) Contact us with this website email.

Step 2) Provide as much detail as possible about the problem you are having.

Step 3) Authorization to return the item will be issued.

Step 4) Return the item for the agreed replacement or refund.

Logistics:

Optics order ship by DHL, UPS, FedEx, TNT, EMS etc

For Laser Machine order delivery, can be optional with terms of EXW, FOB, CNF, CIF by Express, Air Freight or Sea Freight based on the buyer's forwarder or ours.

FAQ

Q1.Are you a manufacturer?

A1: Yes, we are professional and experienced manufacturer with our own molds and production lines.

Q2.How about quality of products?

A2: Our technicians and QC teams test the products one by one using aging line, professional devices and instruments to ensure the quality for all products.

Q3.How about price?

A3: We are a manufacturer and always offer our customers the most competitive prices.

Q4.How to place an order?

A4: Contact with online service, or sent email to us directly, we will reply to you with product price, specifications, packing etc. soon. Thank you.

Q5.May I send material to test marking performance?

A5: Yes! You are welcome to send material to test our superior quality and service.

Q6.Can I visit your factory?

A6: Yes, welcome to visit our factory at your convenient time.

Q7.How can I make OEM or ODM orders?

A7: We have different print processing for different OEM/ODM orders. Please contact us with online service or send email to us directly.

Q8. How should I pay for my orders?

A8: You can pay by T/T would be available for qualified bank and MOQ required for each order.