

Product Description

Laser cleaning uses the high energy and narrow pulse width of the laser to instantly vaporize the adhered material or rust on the surface of the cleaned workpiece without damaging the workpiece itself.

Carmanhaas [Industrial Laser Cleaning Systems 1000W Supplier](#), Commonly used optical solutions: the laser beam scans the working surface through the galvanometer system and the field lens to clean the entire working surface. It is widely used in metal surface cleaning, and laser light sources with special energy can also be used in non-metal surface cleaning.

Carmanhaas offer professional laser cleaning system and [Factory Laser Cleaning Price China](#). The optical components mainly include QBH collimating module, galvanometer system and F-Theta lens. The QBH collimation module realizes the conversion of divergent laser beams into parallel beams (to reduce the divergence angle), the galvanometer system realizes beam deflection and scanning, and the F-Theta field lens realizes uniform scanning and focusing of the beam.

Advantage:

- 1.The film damage threshold is 40J/cm², which can withstand 2000W pulses;
- 2.Optimized optical design guarantees long focal depth, which is about 50% longer than conventional systems with the same specifications;
- 3.It can realize the homogenization of the laser energy distribution to ensure the cleaning efficiency while avoiding the damage of the material substrate and the edge thermal influence;
- 4.The lens can achieve a uniformity of more than 90% in the full field of view.



Technical Parameters

1030nm - 1090nm F-Theta Lens:

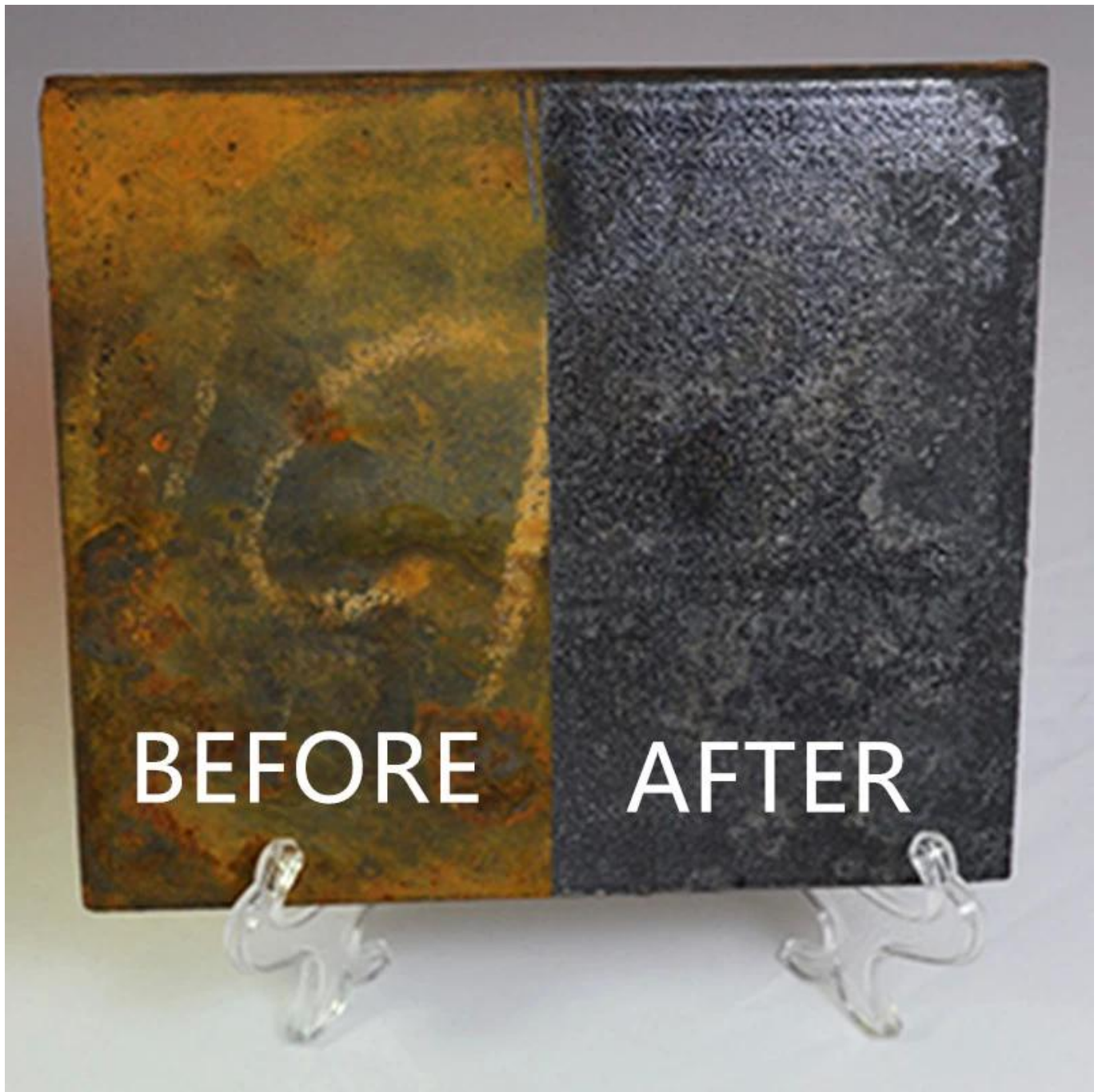
Part Description	Focal Length (mm)	Scan Field (mm)	Max Entrance Pupil (mm)	Working Distance(mm)	Mounting Thread
SL-(1030-1090)-112-160	160	112x112	10	194	M85x1
SL-(1030-1090)-120-254	254	120x120	10	254	M85x1
SL-(1030-1090)-100-170-(14CA)	170	100x100	14	215	M79x1/M102x1
SL-(1030-1090)-150-210-(15CA)	210	150x150	15	269	M79x1/M102x1
SL-(1030-1090)-175-254-(15CA)	254	175x175	15	317	M79x1/M102x1
SL-(1030-1090)-90-175-(20CA)	175	90x90	20	233	M85x1
SL-(1030-1090)-160-260-(20CA)	260	160x160	20	333	M85x1
SL-(1030-1090)-215-340-(16CA)	340	215x215	16	278	M85x1
SL-(1030-1090)-180-348-(30CA)-M102*1-WC	348	180x180	30	438	M102x1
SL-(1030-1090)-180-400-(30CA)-M102*1-WC	400	180x180	30	501	M102x1
SL-(1030-1090)-250-500-(30CA)-M112*1-WC	500	250x250	30	607	M112x1/M100x1

Note: *WC means Scan Lens with water-cooling system

Why are more manufacturers using laser cleaning for material preparation?

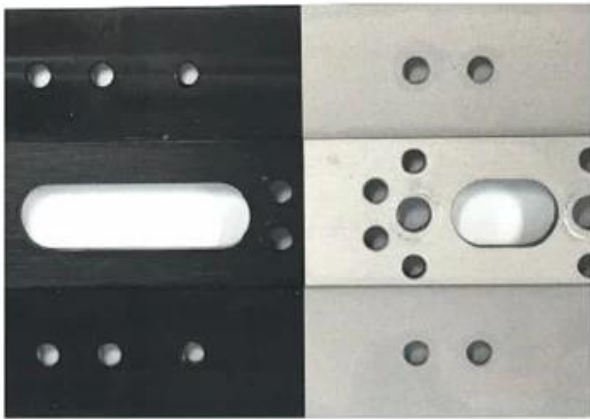
Laser cleaning offers multiple advantages over traditional approaches. It does not involve solvents and there is no abrasive material to be handled and disposed of. Compared with other processes that are less detailed, and frequently manual processes, laser cleaning is controllable and can be applied only to specific areas of a part, can be easily automated to maximize productivity, and provides the guaranteed repeatability demanded by an increasing number of quality standards.

[**Optics Lens For Laser Cleaning Gun Manufacturers**](#)



BEFORE

AFTER



BEFORE

AFTER



BEFORE

AFTER



BEFORE

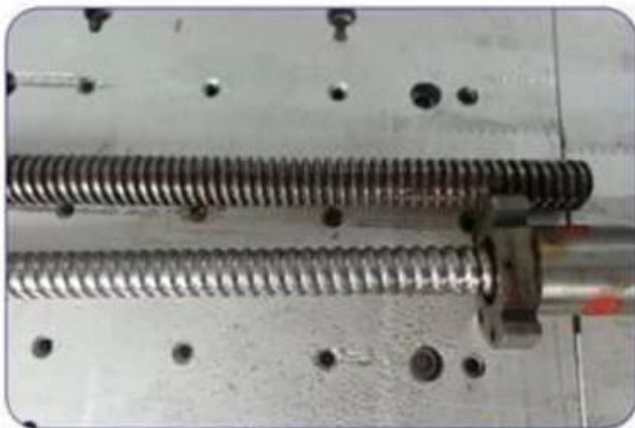
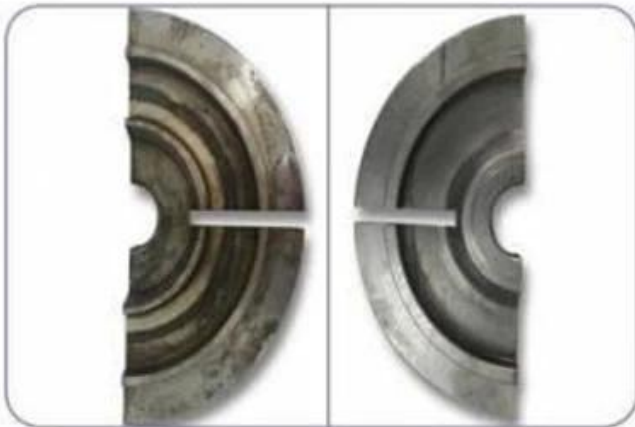


AFTER



BEFORE

AFTER



Factory







重要仪器,
非专业人士勿动。

OptiCentric 300

TRIOPTICS





PerkinElmer Lambda 950---Testing Transmission and Reflectivity



Certificate&Exhibition



C E R T I F I C A T E

ATTESTATION CERTIFICATE OF MACHINERY AND LOW VOLTAGE DIRECTIVES

Technical file of the company mentioned below has been observed and audit has been completed successfully. 2006/42/EC Machinery Directive and 2014/35/EU Low Voltage Directive have been taken as references for these processes

Company Name : **Camman HAAS Laser Technology (Suzhou) Co., Ltd.**

Company Address : No 155, West Road Suhong, Suzhou Industrial Park, Suzhou City, Jiangsu , P.R.China

Related Directives and Annex : **Low Voltage Directive 2014/35/EU
Machinery Directive 2006/42/EC**

Related Standards : **EN ISO 12100:2010; EN 60204-1:2006+A1:2009+AC:2010**

Product Name : **Laser Marking Machine**

Report No and Date : **SD-90049717.09.08.2018**

Product Brand/Model/Type : **LMCH-3W,LMCH-5W,LMCH-10W,LMCH-15W,LMCH-20W,LMCH-25W,
LMCH-30W,LMCH-50W,LMCH-60W,LMCH-70W,LMCH-100W,
LMCH-120W,LMCH-150W,LMCH-200W,LMCH-300W,LMCH-500W**

Certificate Number : **M.2018.201.N6073**

Initial Assessment Date : **10.08.2018**

Registration Date : **13.08.2018**

Reissue Date/No :

Expiry Date : **12.08.2023**

Signature
UDEM International Certification
Auditing Training Centre Industry
and Trade Inc. Co.

The validity of the certificate can be checked through www.udem.com.tr. The CE mark shown on the right can only be used under the responsibility of the manufacturer with the completion of EC Declaration of Conformity for all the relevant Directives. This certificate remains the property of UDEM International Certification Auditing Training Centre Industry and Trade Inc. Co. to whom it must be returned upon request. The above named firm must keep a copy of this certificate for 10 years from the registration of certificate. This certificate only covers the product(s) stated above and UDEM must be notified in case of any changes on the product(s).
Address: Mithakent Mahallesi 2073 Sokak (Eski 93 Sokak) No:10 Çankaya - Ankara - TÜRKİYE
Phone: +90 0312 443 03 90 Fax: +90 0312 443 03 76
E-mail: info@udemtd.com.tr www.udem.com.tr



Certificate of Approval

Certificate No.: 10119Q12565R0M

Awarded to

**Carman Haas Laser Technology(SuZhou)
Co., Ltd.**

Organization Code Certificate No. / Unified Social Credit Code:91320594MA1MF4EP56
Add:No.155, West Road Suhong, Suzhou Industrial Park, Suzhou City, Jiangsu Province, P.R. China. 215000

Beijing ZhongLianTianRun Certification Center (ZLTR) certify that the
Quality Management System of the above organization has been assessed and found to be
in accordance with the requirements of the standard:
GB/T19001-2016 / ISO9001:2015

SCOPE OF CERTIFICATION/REGISTRATION

The Research and Development and Production of Optics Lenses (Except the limits of national laws and regulations.)

This certificate is made valid when used with certification scopes and the requirements of applicable laws and regulations. These requirements include, but are not limited to, administrative permits, scopes of qualifications, and CCC requirements.

Subject to operation conditions in requirements conformity with Quality Management System,

This Certificate is valid for a period of three years only,

Date from: Mar 13th,2019 To: Mar 12th,2022

The effectiveness of this Certificate shall be Validated by periodic surveillance audit of ZLTR for maintenance.

Information of this certificate can be found on the official website of Beijing Zhonglian Tianrun Certification center (<http://www.zltr.com.cn>)



Beijing ZhongLianTianRun Certification Center

Room2003, 22nd Floor, 2nd Unit, Block 1, No.4 Yard, Qiyang Road, Chaoyang District, Beijing, P.R. China 100022

Information of the center can be found on the official website of Certification and Accreditation Administration of the People's Republic of China (<http://www.cnca.gov.cn>)

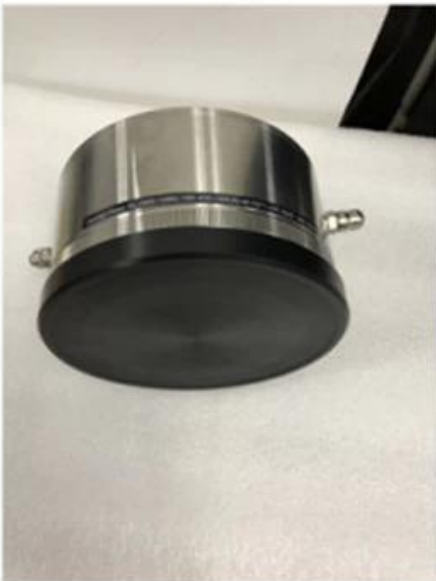
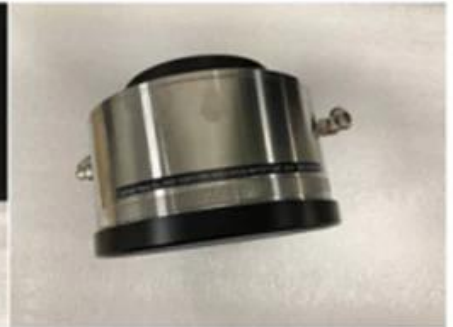
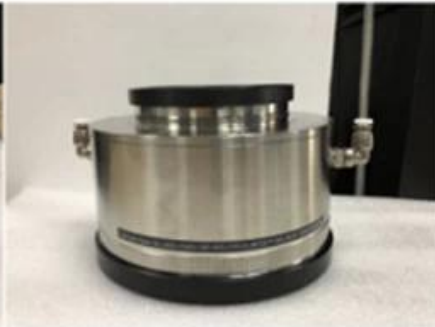
ISO 9001

ISO 9001



Packaging & Shipping

Packaging & Shipping





Return Policy:

Should returns be required:

Step 1) Contact us with this website email.

Step 2) Provide as much detail as possible about the problem you are having.

Step 3) Authorization to return the item will be issued.

Step 4) Return the item for the agreed replacement or refund.

Logistics:

(1)For Laser Optics order delivery,can be optional with DHL,UPS,FedEx,TNT,EMS,ets

(2)For Laser machine order delivery,can be optional with terms of EXWork FOB,CNF,CIF By Air or by Sea based on the buyer's forwarders or ours.

FAQ

Q1.Are you a manufacturer?

A1: Yes, we are professional and experienced manufacturer with our own molds and production lines.

Q2.How about quality of products?

A2: Our technicians and QC teams test the products one by one using aging line, professional devices and instruments to ensure the quality for all products.

Q3.How about price?

A3: We are a manufacturer and always offer our customers the most competitive prices.

Q4.How to place an order?

A4: Contact with online service, or sent email to us directly, we will reply to you with product price, specifications, packing etc. soon. Thank you.

Q5.May I send material to test marking performance?

A5: Yes! You are welcome to send material to test our superior quality and service.

Q6.Can I visit your factory?

A6: Yes, welcome to visit our factory at your convenient time.

Q7.How can I make OEM or ODM orders?

A7: We have different print processing for different OEM/ODM orders. Please contact us with online service or send email to us directly.

Q8. How should I pay for my orders?

A8: You can pay by T/T would be available for qualified bank and MOQ required for each order.