

» » » » » Product Information

Product Description:

The laser scanner system is very popular in soft and supper thin PCB. The application of laser is for panel of Ag etching, it ask supper homogeneity of beam size and very narrow thermal impaction area. The Ftheta will be complex design and coating. ([China ITO-Cutting Lens Price Wholesales](#))

Carmanhaas offer professional laser etching system. Optical components mainly refer to optical components used in circuit board etching. These optical systems are generally composed of galvanometer scanning systems, including beam expanders, galvanometers and F-THETA scan lens.

Advantage:

- (1) Lens surface accuracy $< \lambda/5$, the assembly scheme of the objective lens is required to ensure the height of the spot is consistent;
- (2) Full-format focused spot consistency $>95\%$;
- (3) Focal plane consistency $<0.5\text{mm}$;
- (4) Format focal length ratio >1.05 .



Technical Parameters:

1064nm F-Theta Lens

Part Description	Focal Length(mm)	Scan Field (mm)	Max Entrance Pupil (mm)	Working Distance(mm)	Mounting Thread
SL-1064-140-200	200	140x140	14	208	M85x1
SL-1064-185-255-(16CA)	255	185x185	16	274	M85x1

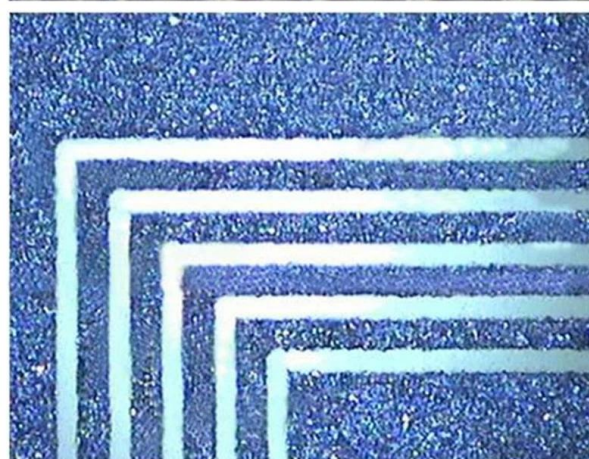
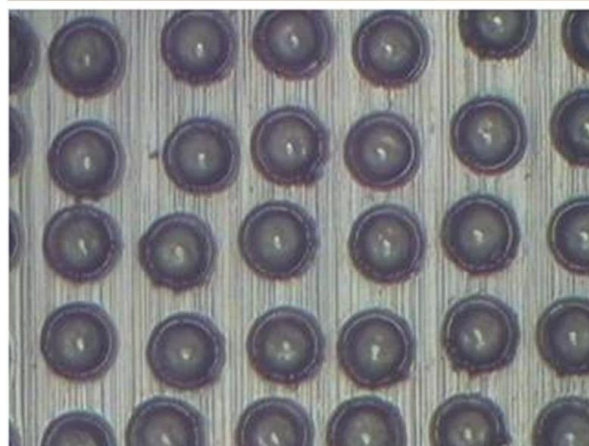
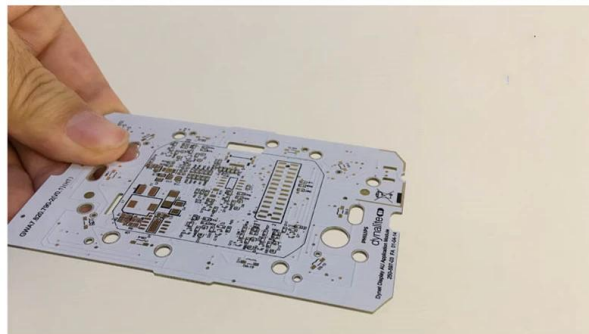
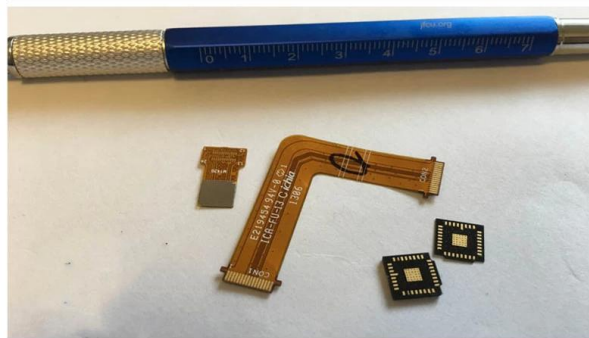
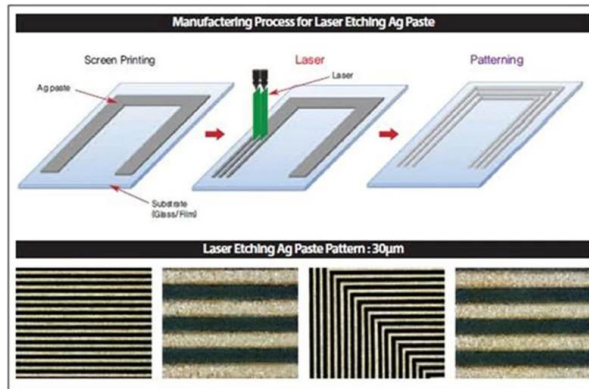
1064nm Beam Expander

Part Description	Expansion Ratio	Input CA (mm)	Output CA (mm)	Housing Dia (mm)	Housing Length (mm)	Mounting Thread
BE-1064-D23:40.5-1.5x	1.5X	10	20.7	27	40.5	M22*0.75
BE4-(1030-1090)-D35:163.9-Z14x	1X-4X	20	35	44	163.9	/
BE4-(1030-1090)-D34:162.6-Z210x	2X-10X	14	34	40	162.6	/

1064nm Mirror

Diameter (mm)	Thickness (mm)	Coating
25.4	6.35	HR@1030-1090nm,45° AOI
30	5	HR@1030-1090nm,45° AOI
50	10	HR@1030-1090nm,45° AOI

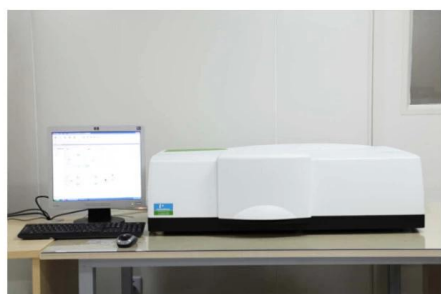
[Best Price Laser Etching China](#)



» » » » » Factory



TRIOPTICS OptiSpheric 2000 AF
---Testing EFL、R、Centering Error、Wedge Angle、BFL、MTF



PerkinElmer Lambda 950---Testing Transmission and Reflectivity

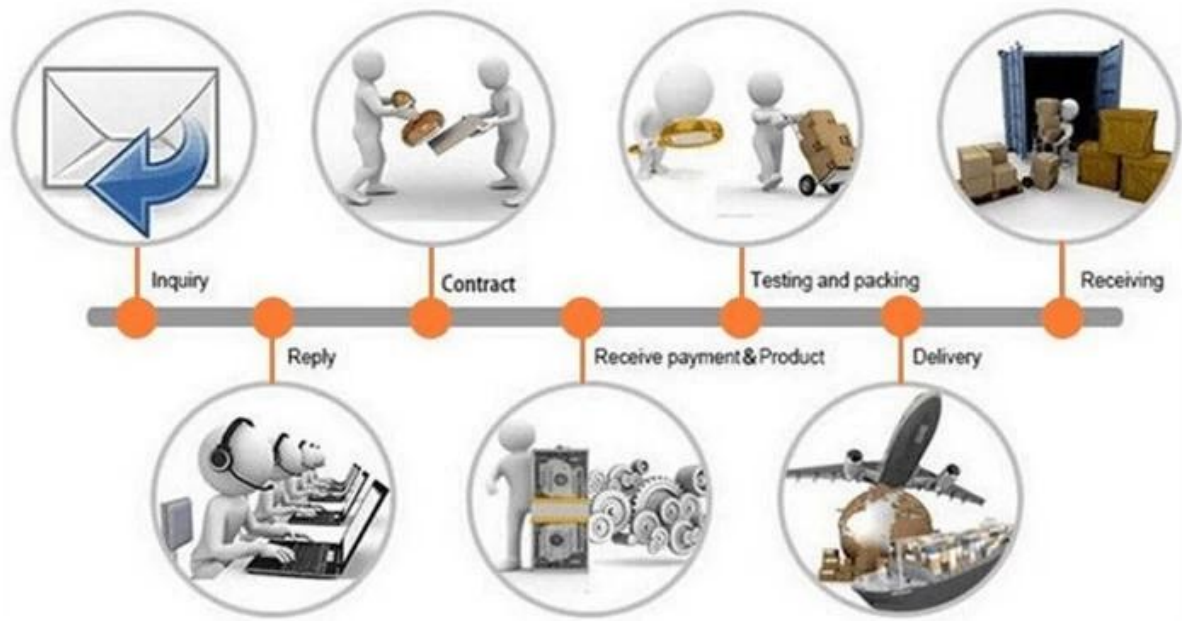


Carmanhaas Coating Machine

》》》》》 Certificate&Exhibition



》》》》》 Packing List



Return Policy:

Should returns be required:

- Step 1) Contact us with this website email.
Step 2) Provide as much detail as possible about the problem you are having.
Step 3) Authorization to return the item will be issued.
Step 4) Return the item for the agreed replacement or refund.

Logistics:

- (1)For Laser Optics order delivery,can be optional with DHL,UPS,FedEx,TNT,EMS,ets
(2)For Laser machine order delivery,can be optional with terms of EXWork FOB,CNF,CIF By Air or by Sea based on the buyer's forwarders or ours.

FAQ

Q1.Are you a manufacturer?

A1: Yes, we are professional and experienced manufacturer with our own molds and production lines.

Q2.How about quality of products?

A2: Our technicians and QC teams test the products one by one using aging line, professional devices and instruments to ensure the quality for all products.

Q3.How about price?

A3: We are a manufacturer and always offer our customers the most competitive prices.

Q4.How to place an order?

A4: Contact with online service, or sent email to us directly, we will reply to you with product price, specifications, packing etc. soon. Thank you.

Q5.May I send material to test marking performance?

A5: Yes! You are welcome to send material to test our superior quality and service.

Q6.Can I visit your factory?

A6: Yes, welcome to visit our factory at your convenient time.

Q7.How can I make OEM or ODM orders?

A7: We have different print processing for different OEM/ODM orders. Please contact us with online service or send email to us directly.

Q8. How should I pay for my orders?

A8: You can pay by T/T would be available for qualified bank and MOQ required for each order.