

# Product Information

---

## Product Description:

The laser scanner system is very popular in soft and supper thin PCB. The application of laser is for panel of Ag etching, it ask supper homogeneity of beam size and very narrow thermal impaction area. The Ftheta will be complex design and coating.

Carmanhaas offer professional laser etching system [optics lens for laser etching](#). Optical components mainly refer to optical components used in circuit board etching. These optical systems are generally composed of galvanometer scanning systems, including beam expanders, galvanometers and F-THETA scan lens.

## Advantage:

- (1)Lens surface accuracy  $< \lambda/5$ , the assembly scheme of the objective lens is required to ensure the height of the spot is consistent;
- (2)Full-format focused spot consistency  $>95\%$ ;
- (3)Focal plane consistency  $<0.5\text{mm}$ ;
- (4)Format focal length ratio  $>1.05$ .



Click [China ITO-cutting lens price Wholesale](#) to know more

## Technical Parameters:

### 1064nm F-Theta Lens

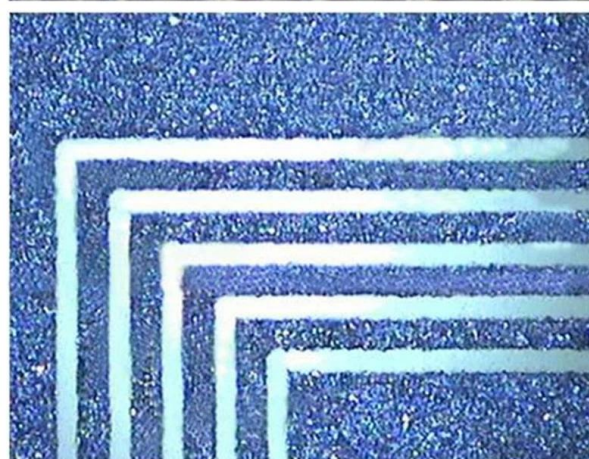
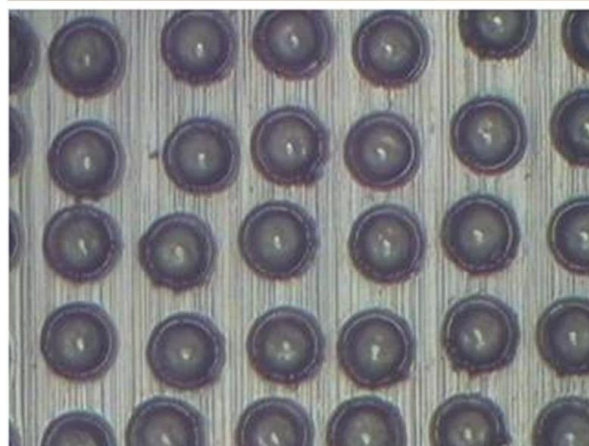
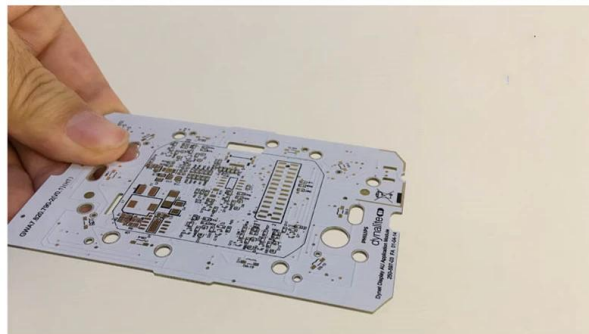
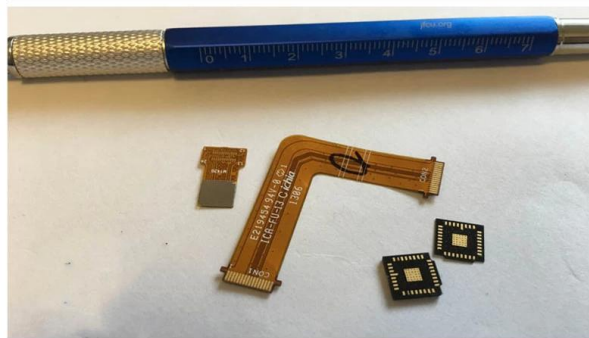
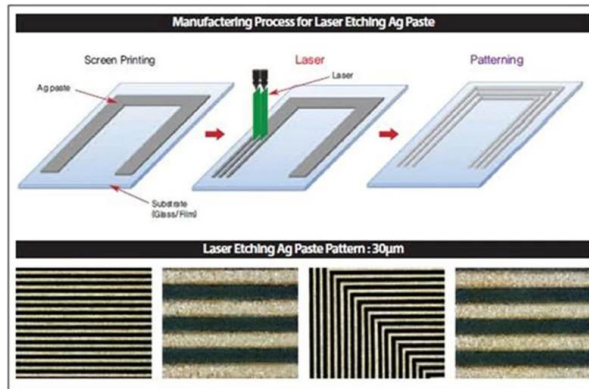
Part Description	Focal Length(mm)	Scan Field (mm)	Max Entrance Pupil (mm)	Working Distance(mm)	Mounting Thread
SL-1064-140-200	200	140x140	14	208	M85x1
SL-1064-185-255-(16CA)	255	185x185	16	274	M85x1

### 1064nm Beam Expander

Part Description	Expansion Ratio	Input CA (mm)	Output CA (mm)	Housing Dia (mm)	Housing Length (mm)	Mounting Thread
BE-1064-D23:40.5-1.5x	1.5X	10	20.7	27	40.5	M22*0.75
BE4-(1030-1090)-D35:163.9-Z14x	1X-4X	20	35	44	163.9	/
BE4-(1030-1090)-D34:162.6-Z210x	2X-10X	14	34	40	162.6	/

### 1064nm Mirror

Diameter (mm)	Thickness (mm)	Coating
25.4	6.35	HR@1030-1090nm,45° AOI
30	5	HR@1030-1090nm,45° AOI
50	10	HR@1030-1090nm,45° AOI





# Factory

---











PerkinElmer Lambda 950---Testing Transmission and Reflectivity





# Certificate&Exhibition

---



# CERTIFICATE

## ATTESTATION CERTIFICATE OF MACHINERY AND LOW VOLTAGE DIRECTIVES

Technical file of the company mentioned below has been observed and audit has been completed successfully. 2006/42/EC Machinery Directive and 2014/35/EU Low Voltage Directive have been taken as references for these processes

Company Name : **Camman HAAS Laser Technology (Suzhou) Co., Ltd.**

Company Address : No 155, West Road Suhong, Suzhou Industrial Park, Suzhou City, Jiangsu, P.R.China

Related Directives and Annex : **Low Voltage Directive 2014/35/EU  
Machinery Directive 2006/42/EC**

Related Standards : **EN ISO 12100:2010; EN 60204-1:2006+A1:2009+AC:2010**

Product Name : **Laser Marking Machine**

Report No and Date : **SD-90049717:09.08.2018**

Product Brand/Model/Type : **LMCH-3W,LMCH-5W,LMCH-10W,LMCH-15W,LMCH-20W,LMCH-25W,  
LMCH-30W,LMCH-50W,LMCH-60W,LMCH-70W,LMCH-100W,  
LMCH-120W,LMCH-150W,LMCH-200W,LMCH-300W,LMCH-500W**

Certificate Number : **M.2018.201.N6073**

Initial Assessment Date : **10.08.2018**

Registration Date : **13.08.2018**

Reissue Date/No :

Expiry Date : **12.08.2023**

The validity of the certificate can be checked through [www.udem.com.tr](http://www.udem.com.tr). The CE mark shown on the right can only be used under the responsibility of the manufacturer with the completion of EC Declaration of Conformity for all the relevant Directives. This certificate remains the property of UDEM International Certification Auditing Training Centre Industry and Trade Inc. Co. to whom it must be returned upon request. The above named firm must keep a copy of this certificate for 15 years from the registration of certificate. This certificate only covers the product(s) stated above and UDEM must be noticed in case of any changes on the product(s).  
Address: Mutlukent Mahallesi 2073 Sokak (Eski 93 Sokak) No:10 Çankaya - Ankara - TURKEY  
Phone: +90 0312 443 03 90 Fax: +90 0312 443 03 70  
E-mail: info@udemtd.com.tr www.udem.com.tr

UDEM International Certification  
Auditing Training Centre Industry  
and Trade Inc. Co.



## Certificate of Approval

Certificate No.: 10119Q12565ROM

Awarded to

**Carman Haas Laser Technology(SuZhou)  
Co., Ltd.**

Organization Code Certificate No. / Unified Social Credit Code: 91320594MA1MF4EP56  
Add.: No.155, West Road Suhong, Suzhou Industrial Park, Suzhou City, Jiangsu Province, P.R. China. 215000

Beijing ZhongLian TianRun Certification Center (ZLTR) certify that the  
Quality Management System of the above organization has been assessed and found to be  
in accordance with the requirements of the standard:  
**GB/T19001-2016 / ISO9001:2015**

SCOPE OF CERTIFICATION/REGISTRATION

**The Research and Development and Production of Optics Lenses (Except the limits of  
national laws and regulations.)**

This certificate is made valid when used with certification scopes and the requirements of applicable  
laws and regulations. These requirements include, but are not limited to, administrative permits,  
scopes of qualifications, and CCC requirements.

Subject to operation conditions in requirements conformity with Quality Management System,

This Certificate is valid for a period of three years only,

**Date from: Mar 13th, 2019 To: Mar 12th, 2022**

The effectiveness of this Certificate shall be Validated by periodic surveillance audit  
of ZLTR for maintenance.

Information of this certificate can be found on the official website of Beijing Zhonglian Tianrun  
Certification center (<http://www.zltr.com.cn>)



**Beijing Zhonglian Tianrun Certification Center**

Room 2603, 22nd Floor, 2nd Unit, Block 1, No.4 Yard, Qiyang Road, Chaoyang District, Beijing, P.R. China 100102

Information of this certificate can be found on the official website of Certification and Accreditation Administration of the People's Republic of China (<http://www.cnca.gov.cn>)

ISO 9001

ISO 9001



## Packing List

---





### Return Policy:

Should returns be required:

- Step 1) Contact us with this website email.  
Step 2) Provide as much detail as possible about the problem you are having.  
Step 3) Authorization to return the item will be issued.  
Step 4) Return the item for the agreed replacement or refund.

### **Logistics:**

- (1)For Laser Optics order delivery,can be optional with DHL,UPS,FedEx,TNT,EMS,ets  
(2)For Laser machine order delivery,can be optional with terms of EXWork FOB,CNF,CIF By Air or by Sea based on the buyer's forwarders or ours.

## FAQ

---

Q1.Are you a manufacturer?

A1: Yes, we are professional and experienced manufacturer with our own molds and production lines.

Q2.How about quality of products?

A2: Our technicians and QC teams test the products one by one using aging line, professional devices and instruments to ensure the quality for all products.

Q3.How about price?

A3: We are a manufacturer and always offer our customers the most competitive prices.

Q4.How to place an order?

A4: Contact with online service, or sent email to us directly, we will reply to you with product price, specifications, packing etc. soon. Thank you.

Q5.May I send material to test marking performance?

A5: Yes! You are welcome to send material to test our superior quality and service.

Q6.Can I visit your factory?

A6: Yes, welcome to visit our factory at your convenient time.

Q7.How can I make OEM or ODM orders?

A7: We have different print processing for different OEM/ODM orders. Please contact us with online service or send email to us directly.

Q8. How should I pay for my orders?

A8: You can pay by T/T would be available for qualified bank and MOQ required for each order.