

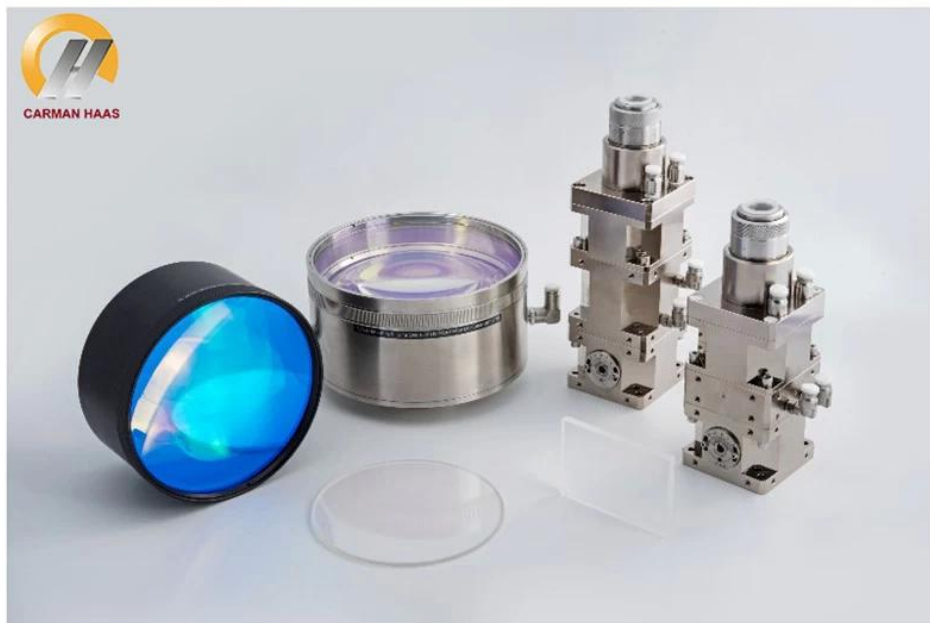
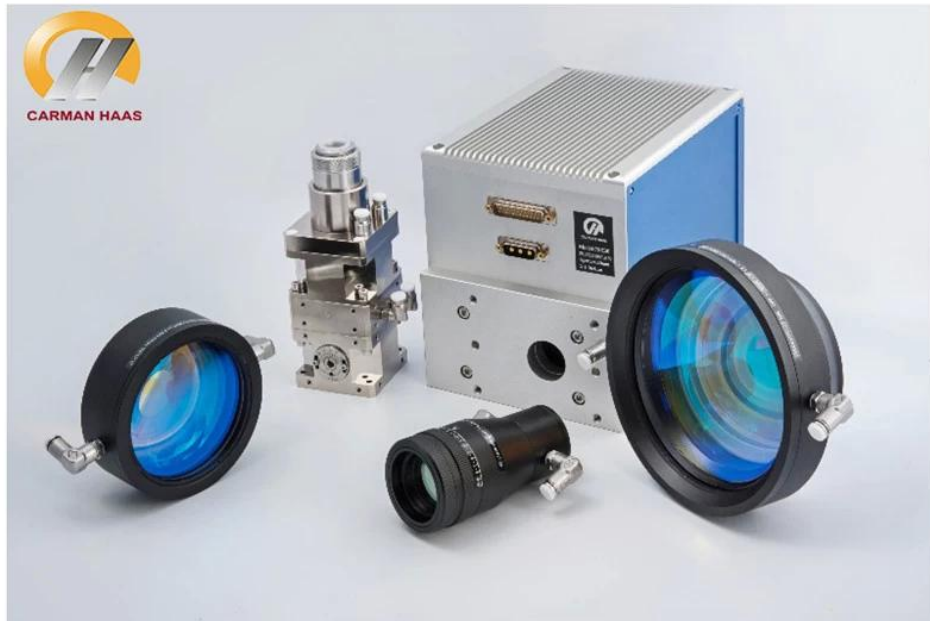
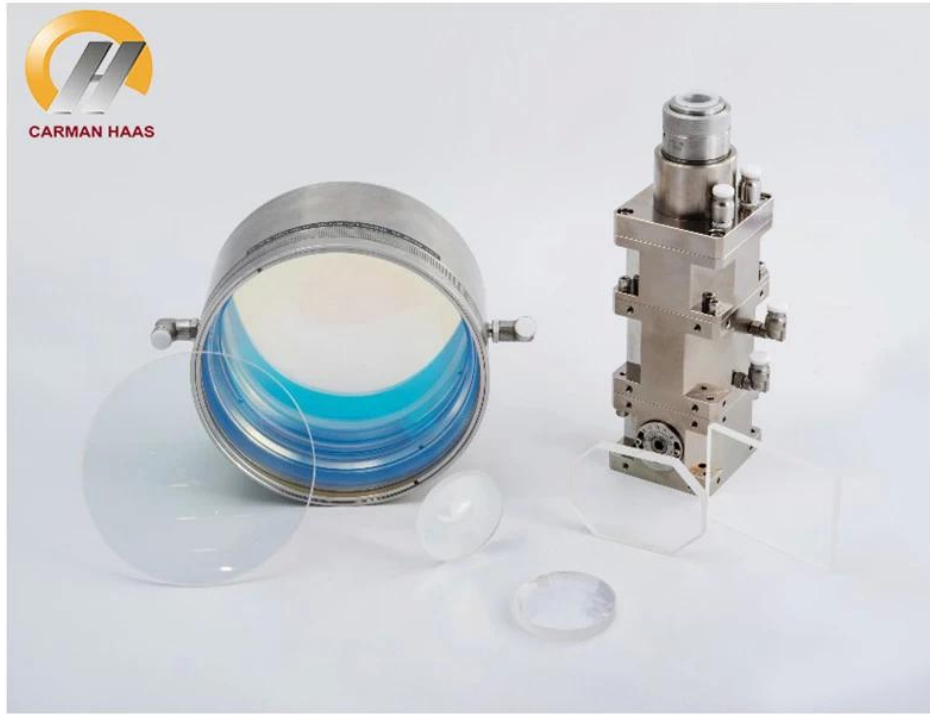
Product Information

Product Description:

Carmanhaas offer professional laser optical system with galvo scan laser processing. The entire system is a separate functional module that enables plug-and-play functionality. Processing by galvanometer scanning, mainly include: QBH collimation module / beam expander, galvanometer system, F-theta scan lens, in which QBH collimation module / beam expander realizes shaping of light source (diverging parallel or small spot becomes large spot), the galvanometer system realizes beam .([Galvo head laser welding manufacturer china](#))

Advantage:

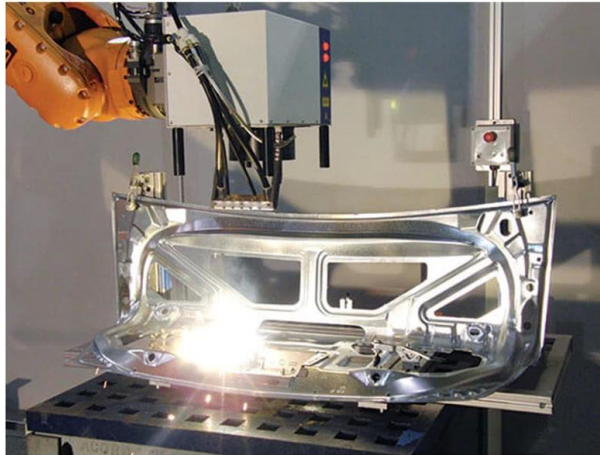
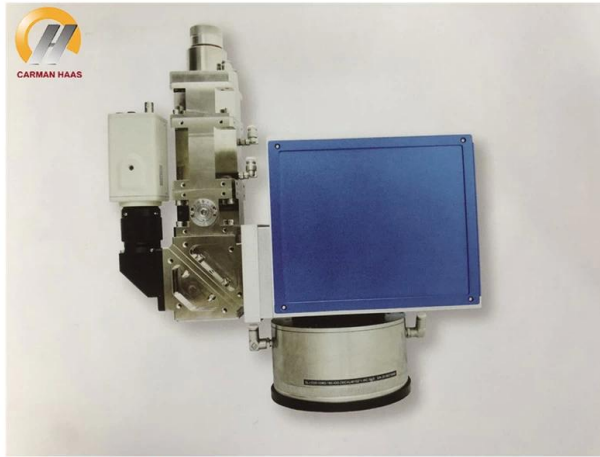
- (1) High damage threshold coating (damage threshold: 40 J/cm², 10 ns). Coating absorption <20 ppm. Ensure that the scan lens can be saturated at 6KW;
- (2) Optimized index design, collimation system wavefront < $\lambda/10$, ensuring diffraction limit;
- (3) Optimized for heat dissipation and cooling structure, ensuring no water cooling below 1KW, temperature <50°C when using 6KW;
- (4) With a non-thermal design, the focus drift is <0.5mm at 80 °C;
- (5) Complete range of specifications, customers can be customized.



Technical Parameters:

1030-1090nm F-Theta Lenses

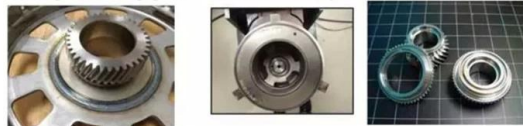
Part Description	Focal Length (mm)	Scan Field (mm)	Max Entrance Pupil (mm)	Working Distance(mm)	Mounting Thread
SL-1064-110-160	160	110x110	12	170	M85x1
SL-(1030-1090)-116-165-(12CA)	165	116x116	12	186	M85x1
SL-(1030-1090)-110-160-(20CA)	160	110x110	20	180	M85x1
SL-(1030-1090)-175-254-(20CA)	254	175x175	20	278	M85x1
SL-(1030-1090)-110-170-(30CA)-M102*1	170	110x110	30	196	M102x1
SL-(1030-1090)-150-210-(30CA)-M102*1	210	150x150	30	269	M102x1
SL-(1030-1090)-175-254-(30CA)-M102*1	254	175x175	30	286	M102x1
SL-(1030-1090)-112-160	160	112x112	10	189	M85x1
SL-(1030-1090)-105-170-(15CA)	170	105x105	15	215	M85x1
SL-(1030-1090)-150-210-(15CA)	210	150x150	15	269	M85x1
SL-(1030-1090)-175-254-(15CA)	254	175x175	15	317	M85x1



白车身 **Body-in-White**



Sun gear, Ring gear Viscous damper Synchronization ring



Differential gear Planetary carrier Flywheel



Recliner Backrest Seat Frame

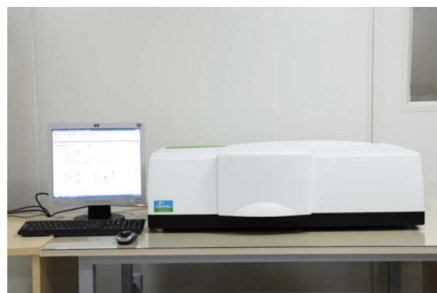


Seat Track Assembly

Factory



TRIOPTICS OptiSpheric 2000 AF
---Testing EFL、R、Centering Error、Wedge Angle、BFL、MTF



PerkinElmer Lambda 950---Testing Transmission and Reflectivity



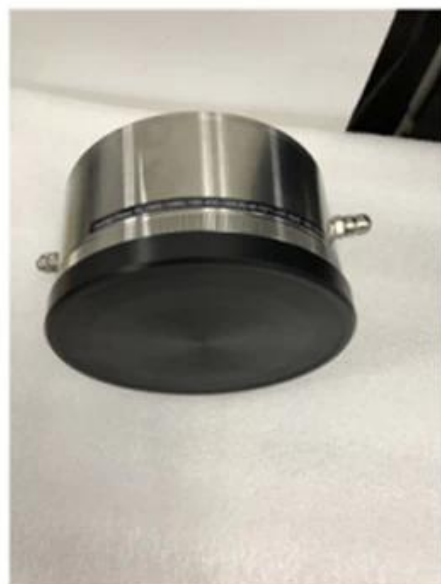
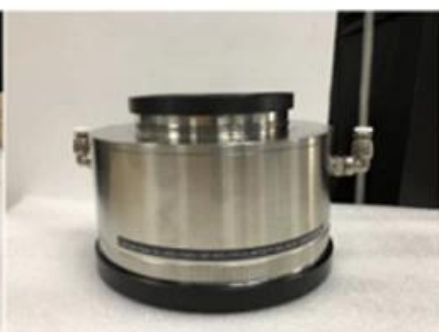
Carmanhaas Coating Machine

Certificate&Exhibition



Packing List

Packaging & Shipping





Return Policy:

Should returns be required:

Step 1) Contact us with this website email.

Step 2) Provide as much detail as possible about the problem you are having.

Step 3) Authorization to return the item will be issued.

Step 4) Return the item for the agreed replacement or refund.

Logistics:

(1)For Laser Optics order delivery,can be optional with DHL,UPS,FedEx,TNT,EMS,ets

(2)For Laser machine order delivery,can be optional with terms of EXWork FOB,CNF,CIF By Air or by Sea based on the buyer's forwarders or ours.

FAQ

Q1.Are you a manufacturer?

A1: Yes, we are professional and experienced manufacturer with our own molds and production lines. ([Welding f theta lenses factory china](#))

Q2.How about quality of products?

A2: Our technicians and QC teams test the products one by one using aging line, professional devices and instruments to ensure the quality for all products.

Q3.How about price?

A3: We are a manufacturer and always offer our customers the most competitive prices.

Q4.How to place an order?

A4: Contact with online service, or sent email to us directly, we will reply to you with product price, specifications, packing etc. soon. Thank you.

Q5.May I send material to test marking performance?

A5: Yes! You are welcome to send material to test our superior quality and service.

Q6.Can I visit your factory?

A6: Yes, welcome to visit our factory at your convenient time.

Q7.How can I make OEM or ODM orders?

A7: We have different print processing for different OEM/ODM orders. Please contact us with online service or send email to us directly.

Q8. How should I pay for my orders?

A8: You can pay by T/T would be available for qualified bank and MOQ required for each order.

