

## Product Description

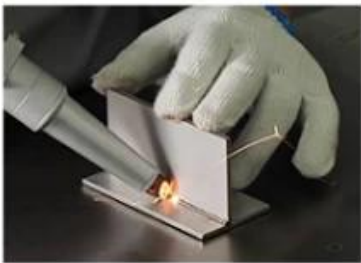
---

Laser welding a high efficient precision welding method which is in the use of high energy density laser beam as a heat source. Laser welding is one of the important aspects of laser processing technology. Laser radiates and heats the work piece surface, The surface heat diffuses to the inside through heat conduction, Then the laser makes the work piece melting and form the specific welding pool by controlling the laser pulse width, energy, peak power and repetition frequency. Due to its unique advantages, it has been successfully applied to the precise welding for micro parts and small parts. ([China welding machine 1000W handheld fiber laser factory](#))

Laser welding is fusing welding technology, laser welder puts laser beam as the energy source, and make it impact on the weld element joints to realize welding .

### WELDING METHOD

---



Vertical Welding



Parallel Welding



Stitch Welding

### Machine Features:

- 1.The energy density is high, the heat input is low, the amount of thermal deformation is small, and the melting zone and the heat-affected zone are narrow and deep.
- 2.High cooling rate, which can weld fine weld structure and good joint performance.
- 3.Compared with contact welding, laser welding eliminates the need for electrodes, reducing daily maintenance costs and greatly increasing work efficiency.
- 4.The weld seam is thin, the penetration depth is large, the taper is small, the precision is high, the appearance is smooth, flat and beautiful.
- 5.No consumables, small size, flexible processing, low operating and maintenance costs.
- 6.The laser is transmitted through fiber optics and can be used in conjunction with a pipeline or robot.

### Machine Advantage:

1☐High efficiency

Speed is faster than the traditional welding speed by more than two times.

2☐High quality

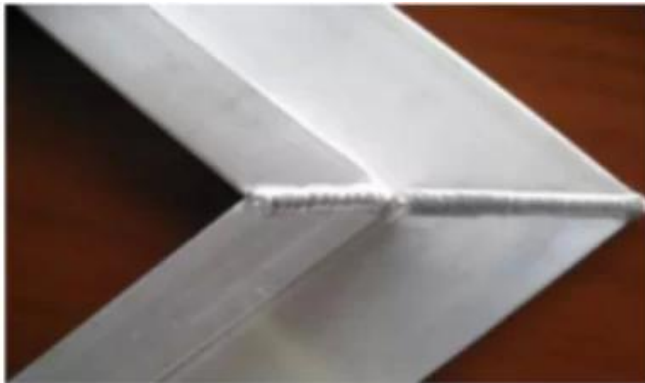
Smooth and beautiful welding seam,without subsequent grinding, saving time and cost.

3☐Low cost

80% to 90% power savings, processing costs are reduced by 30%

4☐Flexible operation

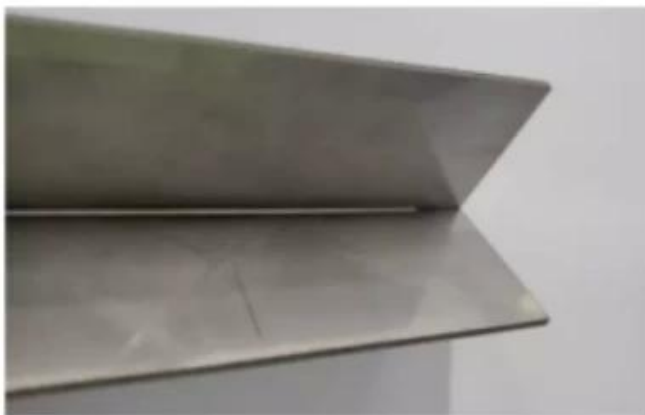
Easy operation,no need experience can do a good job.



Solderless



360 degree no dead seam weld



No deformation



Perfect weld

### [China Handheld Welding manufacturer](#)

#### **Application Industries☐**

Laser welding machine is widely used in the IT industry, medical equipment, communications equipment, aerospace, machinery manufacturing, battery manufacturing, elevator manufacturing, craft gifts, household appliances manufacturing, tooling, gears, automobile shipbuilding, watches and clocks, jewelry and other industries.

#### **Applicable materials:**

This machine is suitable for welding of gold, silver, titanium, nickel, tin, copper, aluminum and other metal and its alloy material, can achieve the same precision welding between metal and dissimilar

metals, has been widely used in aerospace equipment, shipbuilding, instrumentation, mechanical and electrical products, automotive and other industries. ([Handheld Welding supplier China](#))



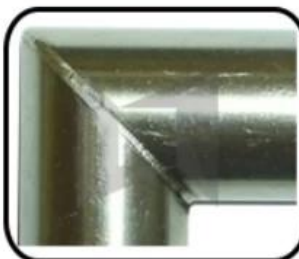
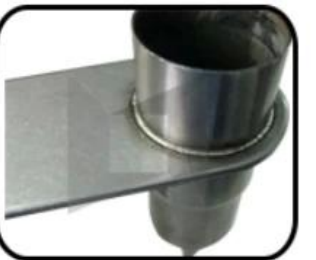
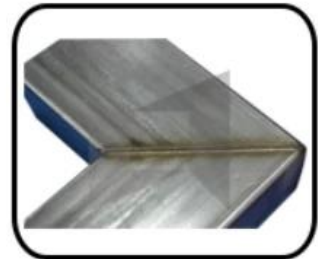
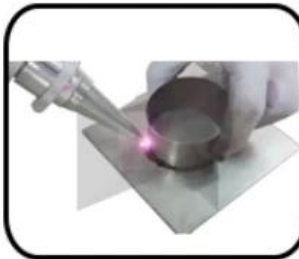
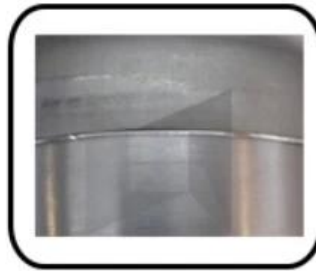
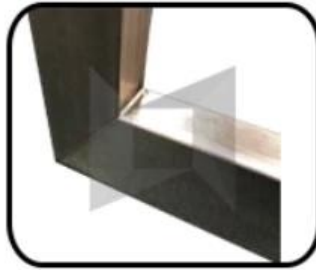
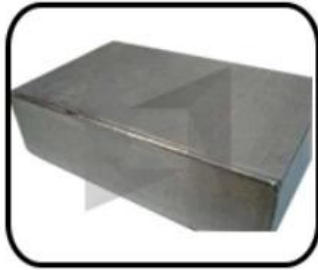
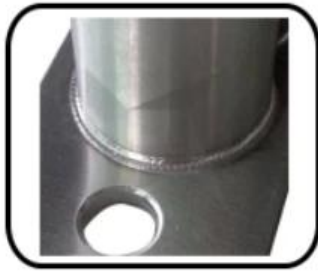
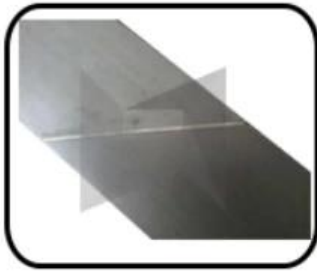
## Machine Technical Parameters:

---

Model:	CHLW-1000W/1500W/2000W
Laser power	1000W / 1500W / 2000W
Laser Source	Raycus (JPT / MAX are optional)
Operating Voltage	AC380V 50Hz
Gross Power	≤ 5000W
Center wavelength	1080±5nm
Output power stability	<2%
Laser frequency	50Hz-5KHz
Adjustable power range	5-95%
Beam quality	1.1
Optimal operating environment	Temperature 10-35 ° C, humidity 20% -80%
Electricity demand	AC220V
Output fiber length	5/10/15m (Optional)
Cooling method	Water Cooling
Gas Source	0.2Mpa (Argon, Nitrogen )
Packing Dimensions	115*70*128cm
Gross Weight	218kg
Cooling water temperature	20-25 ° C
Average consumed power	2000/4000W

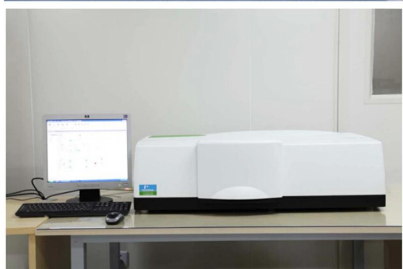
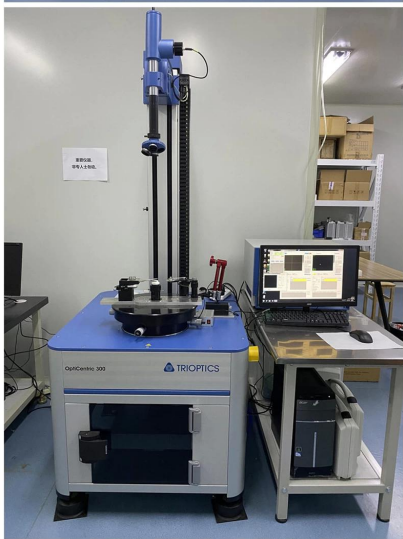


**Welding Samples of stainless steel:**



# Factory

---



PerkinElmer Lambda 950—Testing Transmission and Reflectivity



## Certificate&Exhibition

---





# C E R T I F I C A T E

## ATTESTATION CERTIFICATE OF MACHINERY AND LOW VOLTAGE DIRECTIVES

Technical file of the company mentioned below has been observed and audit has been completed successfully. 2006/42/EC Machinery Directive and 2014/ 35/EU Low Voltage Directive have been taken as references for these processes

Company Name : **Camman HAAS Laser Technology (Suzhou) Co., Ltd.**

Company Address : No 155, West Road Suhong, Suzhou Industrial Park, Suzhou City, Jiangsu , P.R.China

Related Directives and Annex : **Low Voltage Directive 2014/35/EU  
Machinery Directive 2006/42/EC**

Related Standards : **EN ISO 12100:2010; EN 60204-1:2006+A1:2009+AC:2010**

Product Name : **Laser Marking Machine**

Report No and Date : SD-90049717.09.08.2018

Product Brand/Model/Type : LMCH-3W,LMCH-5W,LMCH-10W,LMCH-15W,LMCH-20W,LMCH-25W,  
LMCH-30W,LMCH-50W,LMCH-60W,LMCH-70W,LMCH-100W,  
LMCH-120W,LMCH-150W,LMCH-200W,LMCH-300W,LMCH-500W

Certificate Number : **M.2018.201.N6073**

Initial Assessment Date : 10.08.2018

Registration Date : 13.08.2018

Reissue Date/No :

Expiry Date : **12.08.2023**

*Signature*  
UDEM International Certification  
Auditing Training Centre Industry  
and Trade Inc. Co.



The validity of the certificate can be checked through [www.udem.com.tr](http://www.udem.com.tr). The CE mark shown on the right can only be used under the responsibility of the manufacturer with the completion of EC Declaration of Conformity for all the relevant Directives. This certificate remains the property of UDEM International Certification Auditing Training Centre Industry and Trade Inc. Co. to whom it must be returned upon request. The above-mentioned firm must keep a copy of this certificate for 15 years from the registration of certificate. This certificate only covers the product(s) stated above and UDEM must be notified in case of any changes on the product(s).  
Address: Mithakere Mahallesi 2073 Sokak (Eski 93 Sokak) No:10 Çankaya - Ankara - TÜRKİYE  
Phone: +90 0312 443 03 90 Fax: +90 0312 443 03 76  
E-mail: [info@udemtd.com.tr](mailto:info@udemtd.com.tr) [www.udem.com.tr](http://www.udem.com.tr)



## Certificate of Approval

Certificate No.: 10119Q12565ROM

Awarded to

**Carman Haas Laser Technology(SuZhou)  
Co., Ltd.**

Organization Code Certificate No. / Unified Social Credit Code:91320594MA1MF4EP56  
Add.:No.155, West Road Suhong, Suzhou Industrial Park, Suzhou City, Jiangsu Province, P.R. China. 215000

Beijing ZhongLianTianRun Certification Center (ZLTR) certify that the  
Quality Management System of the above organization has been assessed and found to be  
in accordance with the requirements of the standard:  
**GB/T19001-2016 / ISO9001:2015**

### SCOPE OF CERTIFICATION/REGISTRATION

The Research and Development and Production of Optics Lenses (Except the limits of national laws and regulations.)

This certificate is made valid when used with certification scopes and the requirements of applicable laws and regulations. These requirements include, but are not limited to, administrative permits, scopes of qualifications, and CCC requirements.

Subject to operation conditions in requirements conformity with Quality Management System.

This Certificate is valid for a period of three years only.

**Date from: Mar 13th,2019 To: Mar 12th,2022**

The effectiveness of this Certificate shall be Validated by periodic surveillance audit of ZLTR for maintenance.

Information of this certificate can be found on the official website of Beijing Zhonglian Tianrun Certification center (<http://www.zltr.com.cn>)



Beijing ZhongLiantianrun Certification Center

Room2003, 22nd Floor, 2nd Unit, Block 1, No.4 Yard, Qiyang Road, Chaoyang District, Beijing, P.R. China 100022

Information of the certificate can be found on the official website of Certification and Accreditation Administration of the People's Republic of China (<http://www.cnca.gov.cn>)

ISO 9001

ISO 9001



## Our Service

---

### □ Pre-sale service

#### (1) Free sample marking

For free sample testing, please send us your file, we will do marking here and make video to show you the effect, or send sample to you for checking quality.

#### (2) Customized machine design

According to customer's application, we may revise our machine accordingly for customer's convenience and high production efficiency.

### □ After-sale Service

#### (1) Installation:

After the machine reach the buyer's site, the engineers from the seller are responsible for machine installation and commissioning by using the special tools under the help of the buyer. Buyer should pay for our engineer visa fee, air tickets, accommodation, meals etc.

#### (2) Training:

In order to provide training in safe operation, programming and maintenance, Machine Supplier shall provide qualified instructors after Buyer finally installs the equipment.

1. Mechanical maintenance training
2. Gas / electronic maintenance training
3. Optical maintenance training
4. Programming training
5. Advanced operation training
6. Laser safety training

## Packing List

---

P/N	Item Name		Quantity
	<b>Hanheld Welding Machine</b>	<b>Carmanhaas</b>	1 set
<b>Free Accessories</b>			
1	Protective Lens		2 pieces
2	Nozzle		some
3	Welding Head Cable		1 set
4	Inner hexagon wrench		1 set
5	Ruler	30cm	1 piece
6	User Manual & Laser Source Report		1 piece
7	Laser Protective Goggles	1064nm	1 piece

Packing details:	One set in a wooden case
Single package size:	110x64x48cm
Single gross weight	264Kg
Delivery time:	Shipped in 2-5 days after receiving full payment





**Return Policy:**

Should returns be required:

Step 1) Contact us with this website email.

Step 2) Provide as much detail as possible about the problem you are having.

Step 3) Authorization to return the item will be issued.

Step 4) Return the item for the agreed replacement or refund.

## **Logistics:**

(1)For Laser Optics order delivery,can be optional with DHL,UPS,FedEx,TNT,EMS,ets

(2)For Laser machine order delivery,can be optional with terms of EXWork FOB,CNF,CIF By Air or by Sea based on the buyer's forwarders or ours.

## **FAQ**

---

### **Q1.Are you a manufacturer?**

A1: Yes, we are professional and experienced manufacturer with our own molds and production lines.

### **Q2.How about quality of products?**

A2: Our technicians and QC teams test the products one by one using aging line, professional devices and instruments to ensure the quality for all products.

### **Q3.How about price?**

A3: We are a manufacturer and always offer our customers the most competitive prices.

### **Q4.How to place an order?**

A4: Contact with online service, or sent email to us directly, we will reply to you with product price, specifications, packing etc. soon. Thank you.

### **Q5.May I send material to test marking performance?**

A5: Yes! You are welcome to send material to test our superior quality and service.

### **Q6.Can I visit your factory?**

A6: Yes, welcome to visit our factory at your convenient time.

### **Q7.How can I make OEM or ODM orders?**

A7: We have different print processing for different OEM/ODM orders. Please contact us with online service or send email to us directly.

### **Q8. How should I pay for my orders?**

A8: You can pay by T/T would be available for qualified bank and MOQ required for each order.