

Product Information

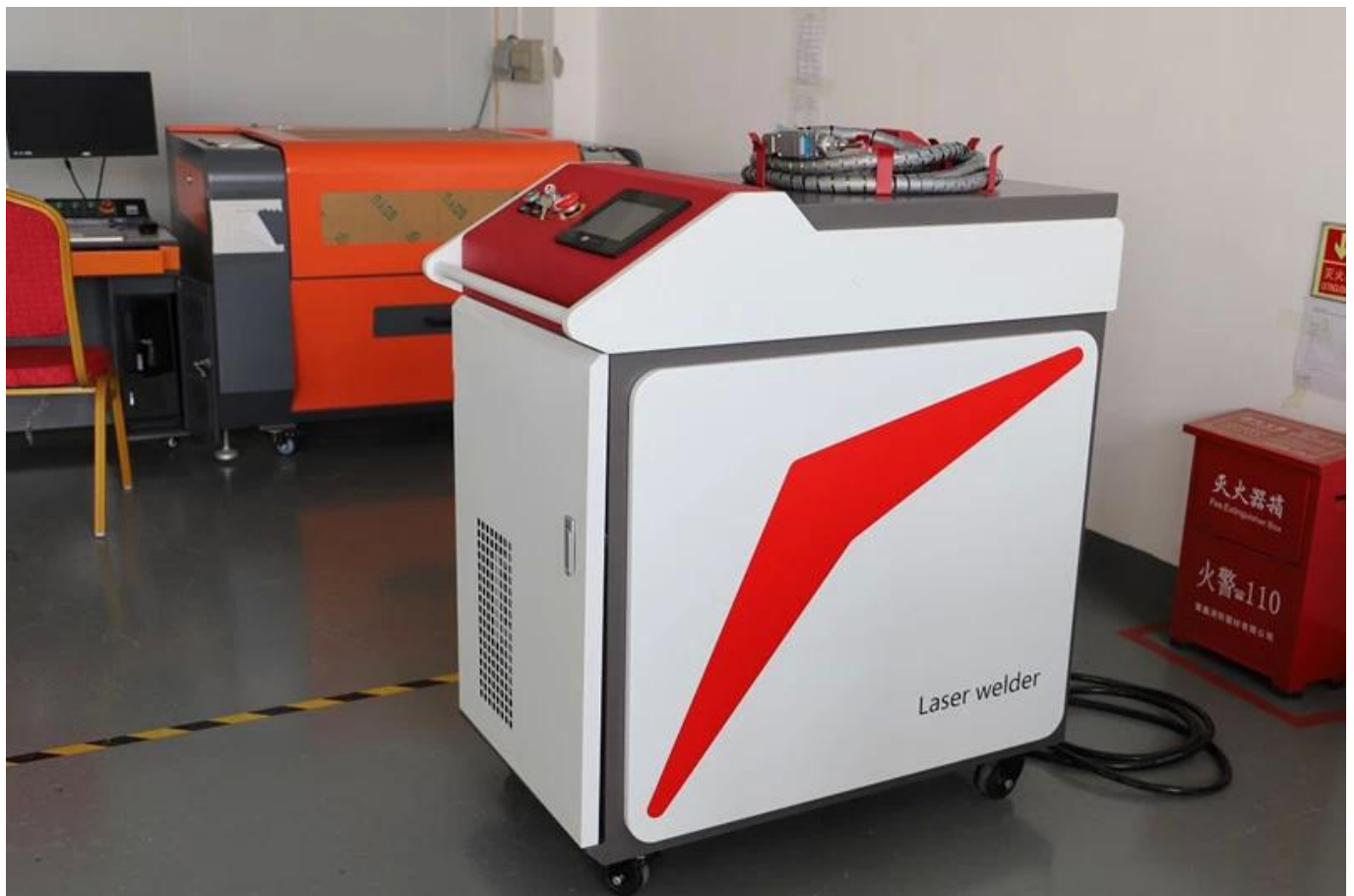
Product Description:

Fiber Laser Welding is a welding technology used to create a strong joint between several metal components with fiber laser. Fiber laser produces a beam of high-intensity that is concentrated into one spot. This concentrated heat source enables fine, deep welding with high welding speed.

Hand-held laser head is light and portable, it can weld any part of the workpiece, and has various welding methods such as butt welding, stack welding, tailored welding.

CARMAN HAAS Laser Technology (Suzhou) Co,Ltd. [Wholesales 1000W Handheld Fiber Laser Welding Machine.](#)

Our Fiber laser welding machine is widely used in IT industry, medical equipment, communications equipment, aerospace, machinery manufacturing, battery manufacturing, elevator manufacturing, craft gifts, household appliances manufacturing, tooling, gears, automobile shipbuilding, and other industries.







CARMANHAAS Supply 1kw/1.5kw/ 2kw fiber laser welding machines for sale.

Click [Handheld Welding Supplier China](#) for more products.

Technical Parameter:

Model:	CHLW-1000W/1500W/2000W
Laser power	1000W / 1500W / 2000W
Laser Wave Length(nm)	Raycus : 1080±5 / IPG : 1070±10
Working mode	Continuous/ Pulse

Welding Speed(mm/s)	0-120
Welding Gap	≤ 1/5 of the thickness of sheet metal
Welding range(mm)	0.5~4 carbon steel or stainless steel; 0.5~3 Aluminum
Fiber Length(m)	Standard 10
Cooling Mode	Water cooling
Electromechanical	380V/50HZ or 220V optional
Electromechanical	Temperature 10-35 ° C, humidity 20% -80%

Laser welding vs Argon arc welding □

Comparison item	Laser welding	Argon arc welding
Welding method	Spot welding or continuous	Spot welding
Applicable materials	Stainless steel, carbon steel, galvanized sheet,aluminum, etc.	Stainless steel, carbon steel, galvanized sheet
Thickness requirements	0.5—4mm	1—12mm
Workpiece deformation/ undercut	Small	Big
Welding speed	0—8m/min	0—1m/min
Subsequent processing	Light or no sanding	Need polishing
Operation difficulty	Simple	Complex
Safety and environmental protection	Relatively safe and environmentally friendly	Not safe and environmentally friendly
Labor costs	General workers (can operate after simple training)	Professional welder
Wearing parts	Lens, nozzle	Argon
Supplies	Argon/Nitrogen	Argon

Applicable materials:

Laser welding machine can be used in welding stainless steel, luminum, copper, chromium, nickel, titanium and other metals or alloys.

1. 1000w/1kw handheld laser welder can weld 0.5-2mm steel;
2. 1500w/1.5kw fiber laser welder is used to weld 0.5-3mm steel;
3. 2000w/2kw laser welder can weld 0.5-4mm steel,0.5-3mm aluminum.

* The above data is based on the triangular light spot.

* Due to the difference of the plate and labor, please refer to the actual welding.

Our Service

□ Pre-sale service

(1) Free sample marking

For free sample testing, please send us your file, we will do marking here and make video to show you the effect, or send sample to you for checking quality.

(2) Customized machine design

According to customer's application, we may revise our machine accordingly for customer's convenience and high production efficiency.

□ After-sale Service

(1) Installation:

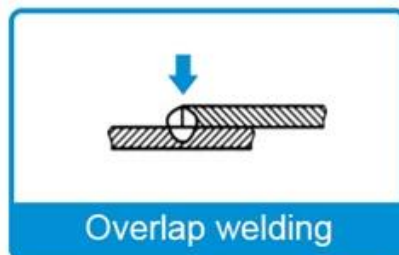
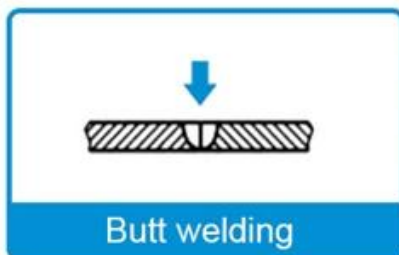
After the machine reach the buyer's site, the engineers from the seller are responsible for machine installation and commissioning by using the special tools under the help of the buyer. Buyer should pay for our engineer visa fee, air tickets, accommodation, meals etc.

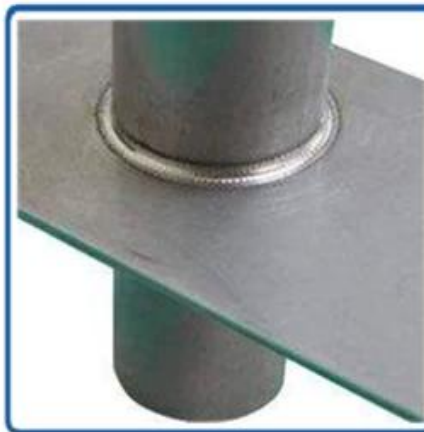
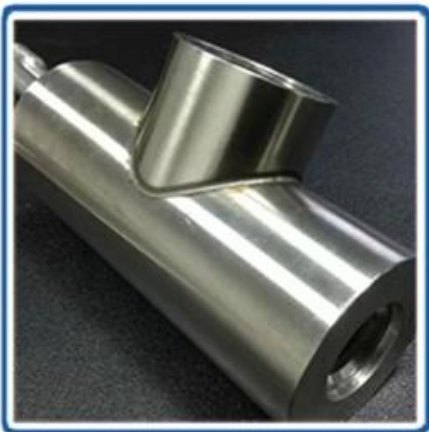
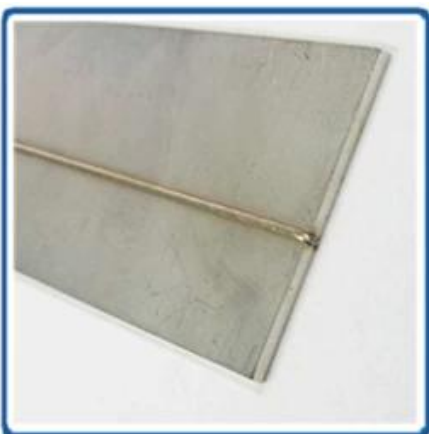
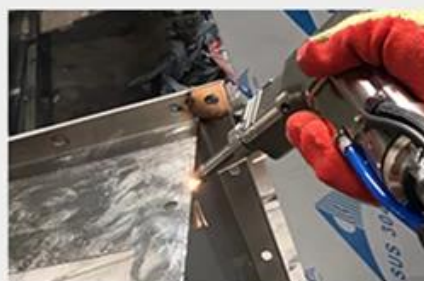
(2) Training:

In order to provide training in safe operation, programming and maintenance, Machine Supplier shall provide qualified instructors after Buyer finally installs the equipment.

1. Mechanical maintenance training
2. Gas / electronic maintenance training
3. Optical maintenance training
4. Programming training
5. Advanced operation training
6. Laser safety training

Welding Samples :



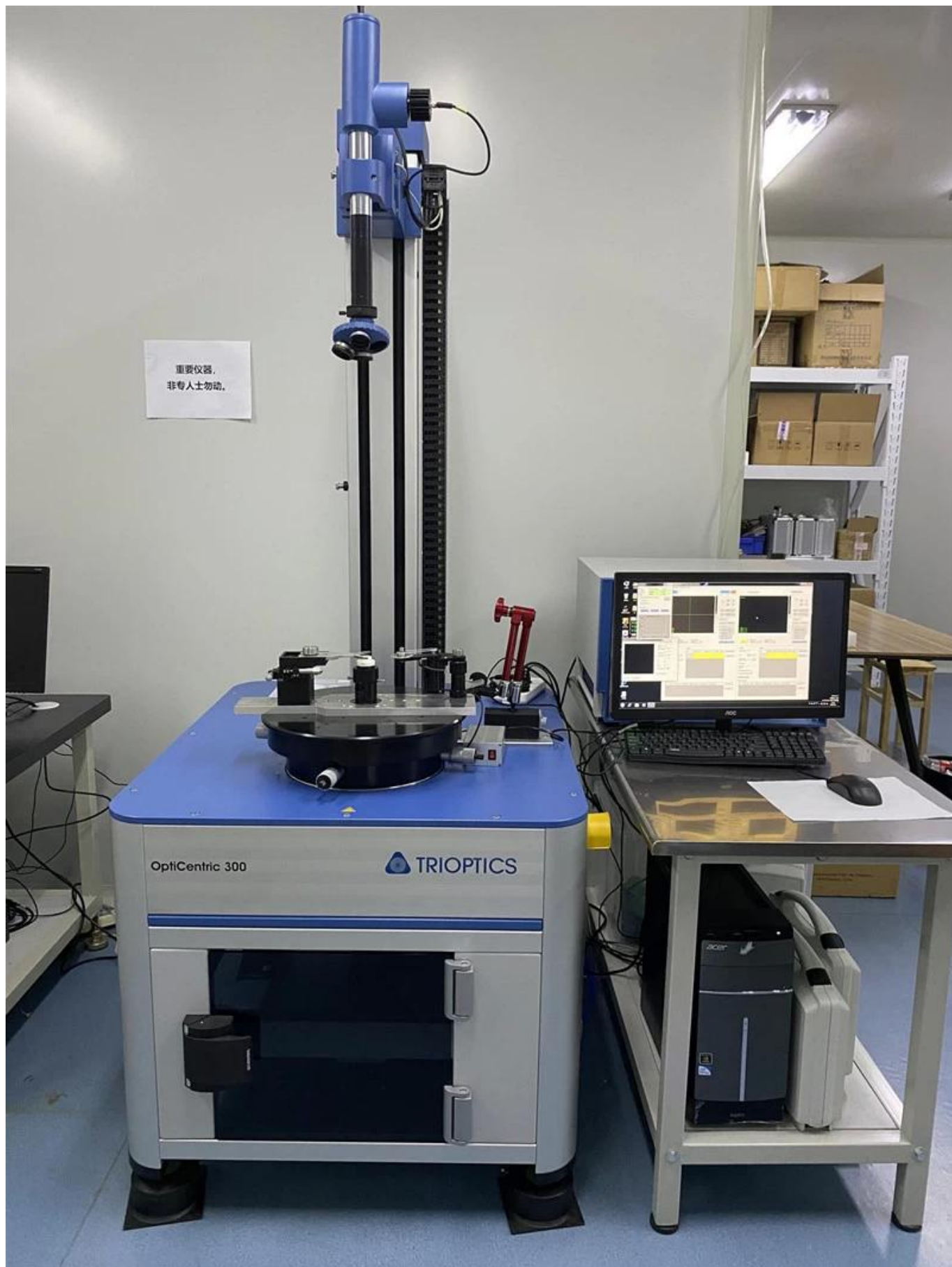


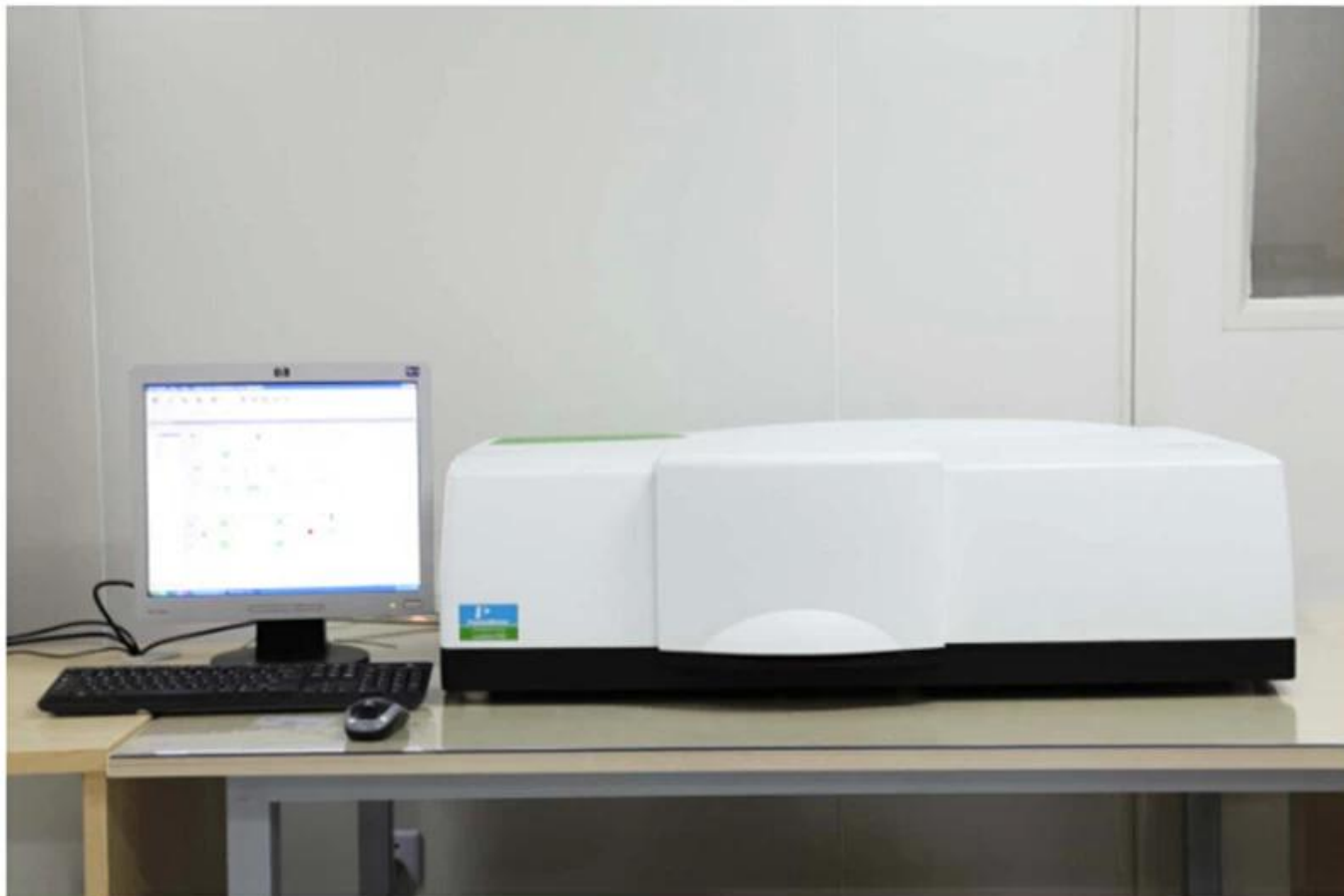


Factory









PerkinElmer Lambda 950---Testing Transmission and Reflectivity



Certificate&Exhibition



CERTIFICATE

ATTESTATION CERTIFICATE OF MACHINERY AND LOW VOLTAGE DIRECTIVES

Technical file of the company mentioned below has been observed and audit has been completed successfully. 2006/42/EC Machinery Directive and 2014/35/EU Low Voltage Directive have been taken as references for these processes

Company Name : **Camman HAAS Laser Technology (Suzhou) Co., Ltd.**

Company Address : No 155, West Road Suhong, Suzhou Industrial Park, Suzhou City, Jiangsu, P.R.China

Related Directives and Annex : **Low Voltage Directive 2014/35/EU
Machinery Directive 2006/42/EC**

Related Standards : **EN ISO 12100:2010; EN 60204-1:2006+A1:2009+AC:2010**

Product Name : **Laser Marking Machine**

Report No and Date : **SD-90049717:09.08.2018**

Product Brand/Model/Type : **LMCH-3W,LMCH-5W,LMCH-10W,LMCH-15W,LMCH-20W,LMCH-25W,
LMCH-30W,LMCH-50W,LMCH-60W,LMCH-70W,LMCH-100W,
LMCH-120W,LMCH-150W,LMCH-200W,LMCH-300W,LMCH-500W**

Certificate Number : **M.2018.201.N6073**

Initial Assessment Date : **10.08.2018**

Registration Date : **13.08.2018**

Reissue Date/No :

Expiry Date : **12.08.2023**

The validity of the certificate can be checked through www.udem.com.tr. The CE mark shown on the right can only be used under the responsibility of the manufacturer with the completion of EC Declaration of Conformity for all the relevant Directives. This certificate remains the property of UDEM International Certification Auditing Training Centre Industry and Trade Inc. Co. to whom it must be returned upon request. The above named firm must keep a copy of this certificate for 10 years from the registration of certificate. This certificate only covers the product(s) stated above and UDEM must be notified in case of any changes on the product(s).

Address: Muratkerem Mahallesi 2073 Sokak (Eski 93 Sokak) No:10 Çankaya - Ankara - TÜRKİYE

Phone: +90 0312 443 03 90 Fax: +90 0312 443 03 76

E-mail: info@udemtd.com.tr www.udemtd.com.tr

UDEM International Certification
Auditing Training Centre Industry
and Trade Inc. Co.



Certificate of Approval

Certificate No.: 10119Q12565ROM

Awarded to

**Carman Haas Laser Technology(SuZhou)
Co., Ltd.**

Organization Code Certificate No.: / Unified Social Credit Code:91320594MA1MF4EP56
Add: No.155, West Road Suhong, Suzhou Industrial Park, Suzhou City, Jiangsu Province, P.R. China. 215000

Beijing ZhongLianTianRun Certification Center (ZLTR) certify that the
Quality Management System of the above organization has been assessed and found to be
in accordance with the requirements of the standard:
GB/T19001-2016 / ISO9001:2015

SCOPE OF CERTIFICATION/REGISTRATION

**The Research and Development and Production of Optics Lenses (Except the limits of
national laws and regulations.)**

This certificate is made valid when used with certification scopes and the requirements of applicable
laws and regulations. These requirements include, but are not limited to, administrative permits,
scopes of qualifications, and CCC requirements.

Subject to operation conditions in requirements conformity with Quality Management System,

This Certificate is valid for a period of three years only,

Date from: Mar 13th,2019 To: Mar 12th,2022

The effectiveness of this Certificate shall be Validated by periodic surveillance audit
of ZLTR for maintenance.

Information of this certificate can be found on the official website of Beijing ZhongLianTianRun
Certification center (<http://www.zltr.com.cn>)



Beijing ZhongLianTianRun Certification Center

Room2003, 22nd Floor, 2nd Unit, Block 1, No.4 Yard, Qiyang Road, Chaoyang District, Beijing, P.R. China 100022

Information of this certificate can be found on the official website of Certification and Accreditation Administration of the People's Republic of China (<http://www.cnca.gov.cn>)

ISO 9001

ISO 9001



Packing List

P/N	Item Name		Quantity
	Hanheld Welding Machine	Carmanhaas	1 set
Free Accessories			
1	Protective Lens		2 pieces
2	Nozzle		some
3	Welding Head Cable		1 set
4	User Manual & Laser Source Report		1 piece
5	Laser Protective Goggles	1064nm	1 piece

Packing details:	One set in a wooden case
Single package size:	110x64x48cm
Single gross weight	264Kg
Delivery time :	Shipped in 2-5 days after receiving full payment





Return Policy:

Should returns be required:

Step 1) Contact us with this website email.

Step 2) Provide as much detail as possible about the problem you are having.

Step 3) Authorization to return the item will be issued.

Step 4) Return the item for the agreed replacement or refund.

Logistics:

Optics order ship by DHL, UPS, FedEx, TNT, EMS etc

For Laser Machine order delivery, can be optional with terms of EXW, FOB, CNF, CIF by Express, Air Freight or Sea Freight based on the buyer's forwarder or ours.

FAQ

Q1.Are you a manufacturer?

A1: Yes, we are professional and experienced manufacturer with our own molds and production lines.

Q2.How about quality of products?

A2: Our technicians and QC teams test the products one by one using aging line, professional devices and instruments to ensure the quality for all products.

Q3.How about price?

A3: We are a manufacturer and always offer our customers the most competitive prices.

Q4.How to place an order?

A4: Contact with online service, or sent email to us directly, we will reply to you with product price, specifications, packing etc. soon. Thank you.

Q5.May I send material to test marking performance?

A5: Yes! You are welcome to send material to test our superior quality and service.

Q6.Can I visit your factory?

A6: Yes, welcome to visit our factory at your convenient time.

Q7.How can I make OEM or ODM orders?

A7: We have different print processing for different OEM/ODM orders. Please contact us with online service or send email to us directly.

Q8. How should I pay for my orders?

A8: You can pay by T/T would be available for qualified bank and MOQ required for each order.